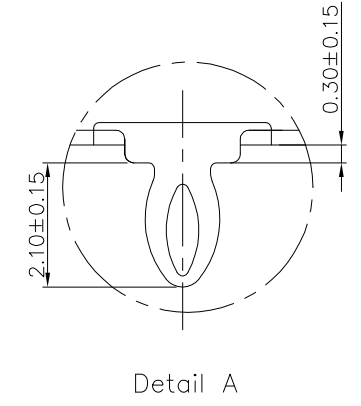
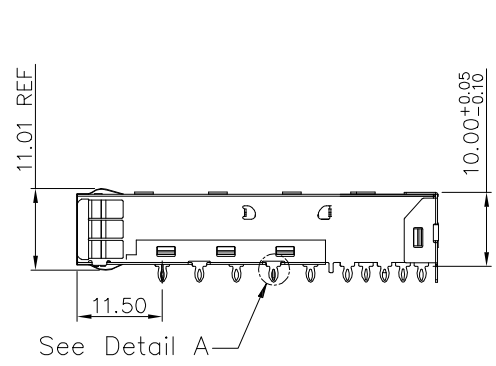
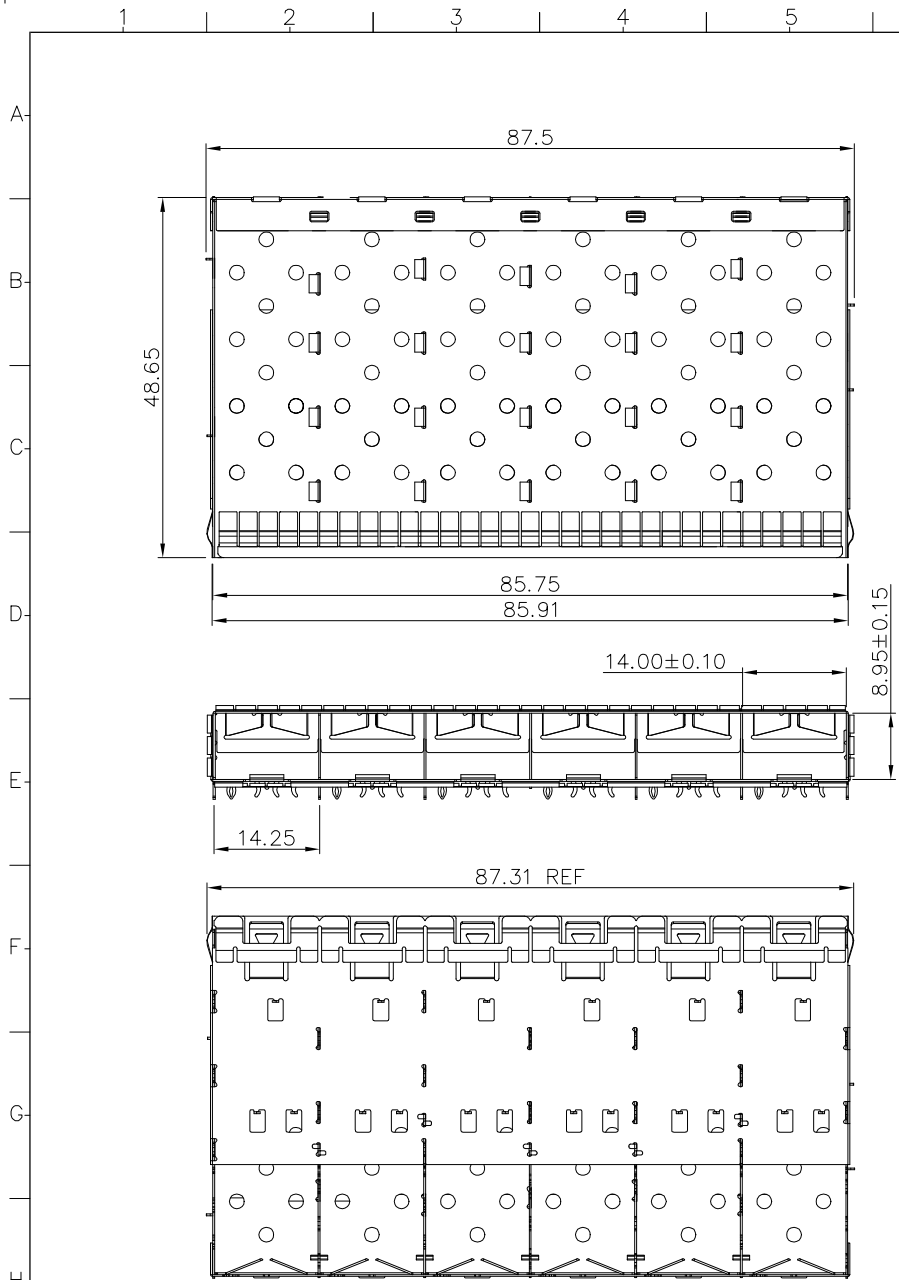


REV.	SPECIFICATION	ECN NO.	APPD.

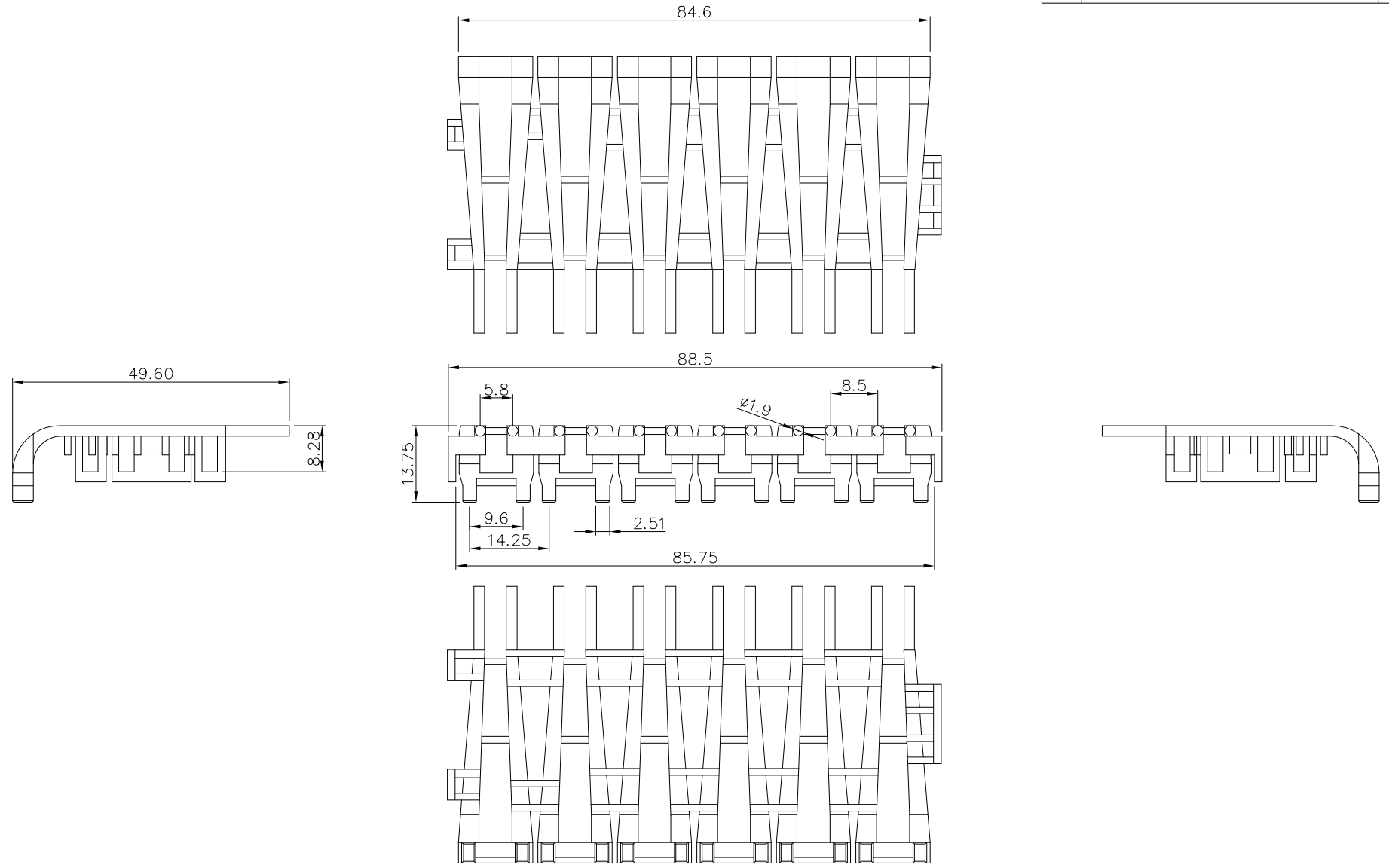
Material:
 Cage: Cu-Ni Alloy.
 EMI Fingers: Cu-Ni Alloy.
 Light Pipe: Polycarbonate, Clear.
Electrical Characteristics:
 Operating Temperature: -40°C~+85°C.
***RoHS Compliant**



8951-E 6 P P 0 A
 Series ———
 6:6 Port ———
 P: Press Fit ———
 A: Tray Package
 0: W/O Light Pipe
 P: Spring Plus

Tolerances .x = ±0.25 .xx = ±0.20 .xxx = ±0.10	Dwg. No.	8951D00022		Title: 8951-E Series 1X6 SFP+ Cage Press Fit Type With Spring Plus	 OUPIIN ELECTRONIC(KUNSHAN) CO., LTD. P/N: 8951-E6PP0A	
	Projection					
	Unit	mm	Scale			1:N
	Drawn By	Martin 12/15'23				① 619
SHEET		1/5	Ver.No.	A1		

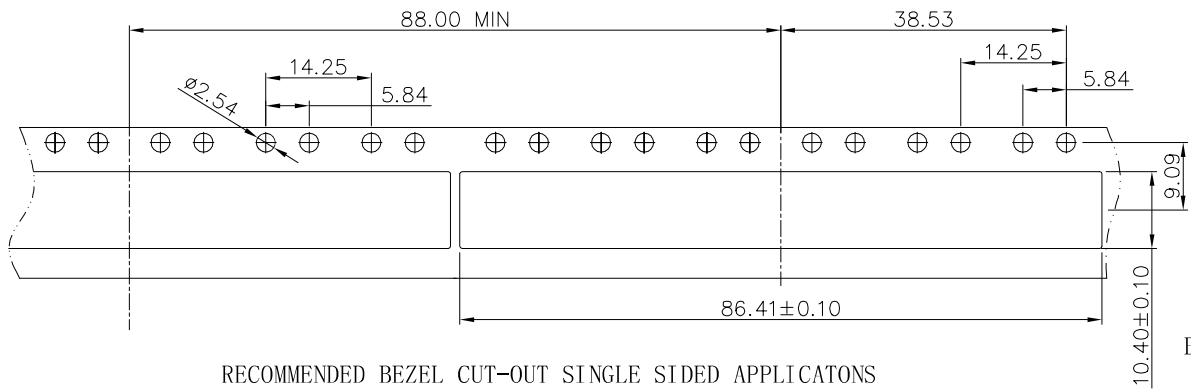
REV.	SPECIFICATION	ECN NO.	APPD.



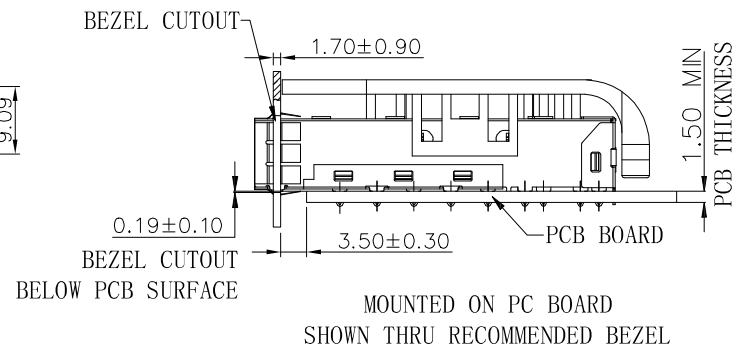
Tolerances .x = ± 0.25 .xx = ± 0.20 .xxx = ± 0.10	Dwg. No.	8951D00022		Title: 8951-E Series 1X6 SFP+ Cage Press Fit Type With Spring Plus	
	Projection				
	Unit	mm	Scale		1:N
	Drawn By	Martin 12/15'23			$\text{Q} 619$

OUPIIN			
OUPIIN ELECTRONIC(KUNSHAN) CO., LTD.			
P/N:8951-E6PP0A			
SHEET	2/5	Ver.No.	A1

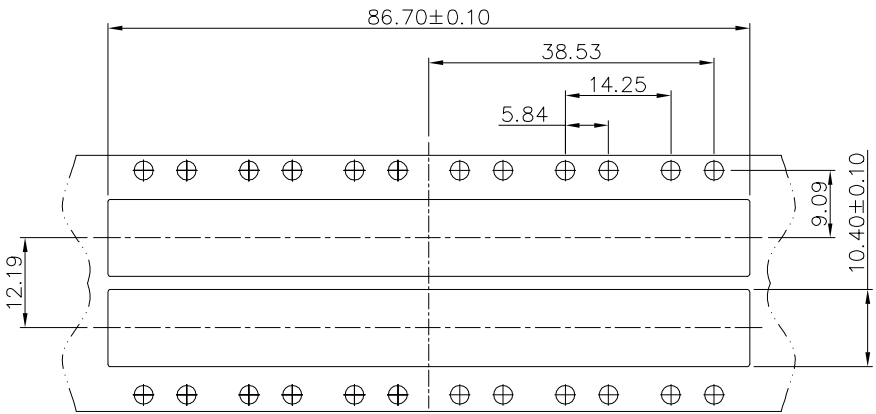
REV.	SPECIFICATION	ECN NO.	APPD.



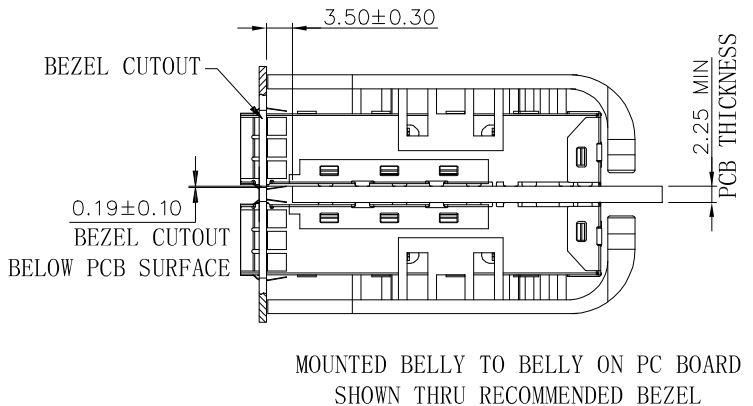
RECOMMENDED BEZEL CUT-OUT SINGLE SIDED APPLICATIONS



MOUNTED ON PC BOARD SHOWN THRU RECOMMENDED BEZEL



RECOMMENDED BEZEL CUT-OUT BELLY TO BELLY APPLICATIONS

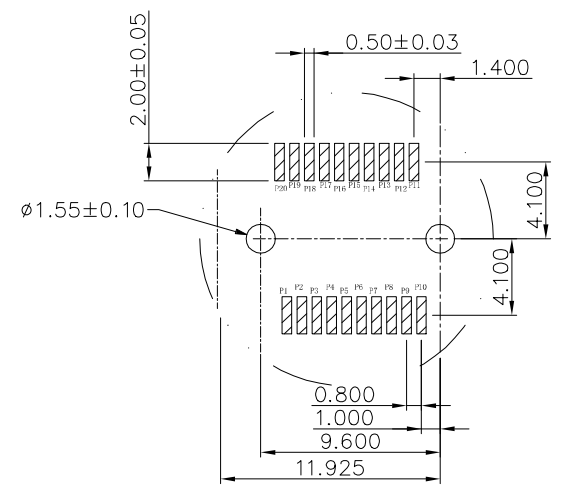
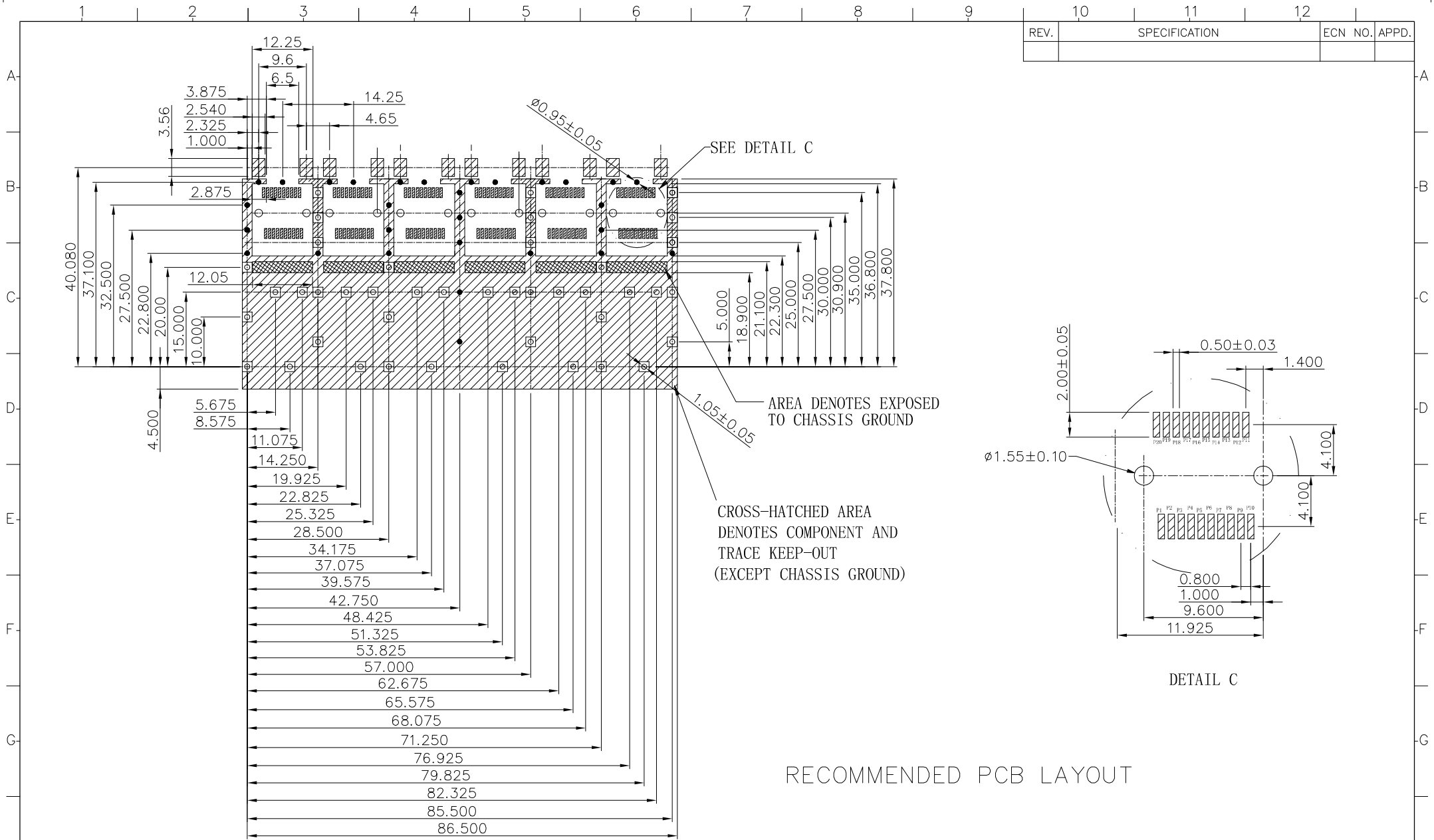


MOUNTED BELLY TO BELLY ON PC BOARD SHOWN THRU RECOMMENDED BEZEL

Tolerances .x = ±0.25 .xx = ±0.20 .xxx = ±0.10	Dwg. No.	8951D00022		Title: 8951-E Series 1X6 SFP+ Cage Press Fit Type With Spring Plus	 OUPIIN ELECTRONIC(KUNSHAN) CO., LTD. P/N:8951-E6PP0A		
	Projection					SHEET 3/5 Ver.No. A1	
	Unit	mm	Scale				1:N
	Drawn By	Martin	Date				12/15'23

① 619

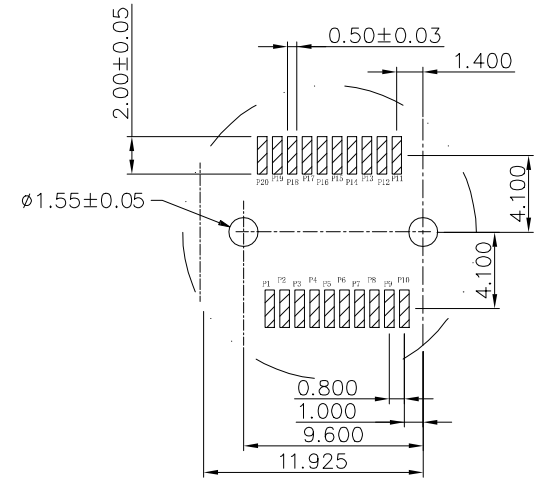
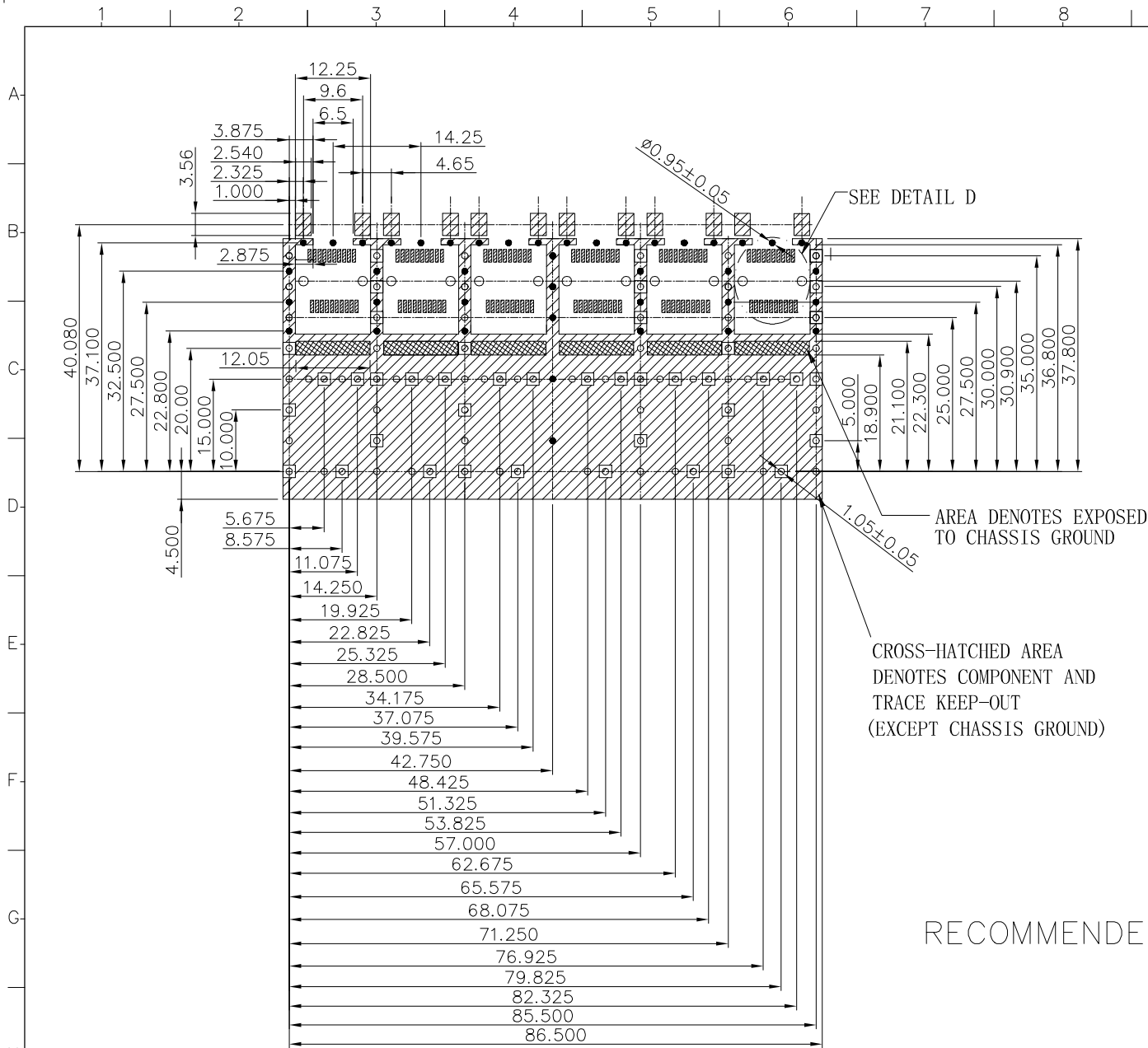
REV.	SPECIFICATION	ECN NO.	APPD.



RECOMMENDED PCB LAYOUT

Tolerances .x = ±0.25 .xx = ±0.20 .xxx = ±0.10	Dwg. No.	8951D00022		Title: 8951-E Series 1X6 SFP+ Cage Press Fit Type With Spring Plus	 DUPIN ELECTRONIC(KUNSHAN) CO., LTD. P/N:8951-E6PP0A		
	Projection						
	Unit	mm	Scale			1:N	
	Drawn By	Martin 12/15'23				① 619	
				SHEET	4/5	Ver.No.	A1

REV.	SPECIFICATION	ECN NO.	APPD.



RECOMMENDED PCB LAYOUT

Tolerances .x = ±0.25 .xx = ±0.20 .xxx = ±0.10	Dwg. No.	8951D00022		Title: 8951-E Series 1X6 SFP+ Cage Press Fit Type With Spring Plus	 OUPIN ELECTRONIC(KUNSHAN) CO., LTD. P/N:8951-E6PP0A	
	Projection					
	Unit	mm	Scale			1:N
	Drawn By	Martin 12/15'23				① 619
					SHEET 5/5 Ver.No. A1	