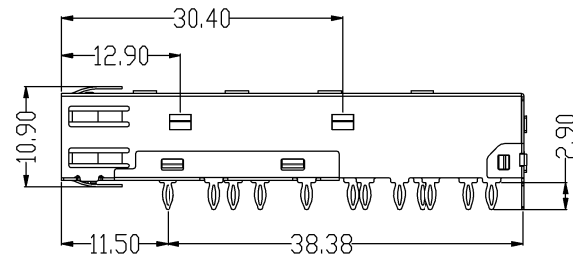
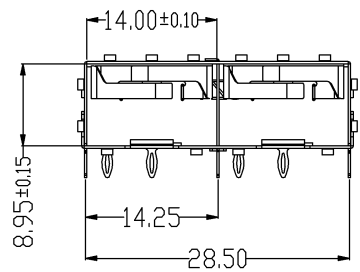
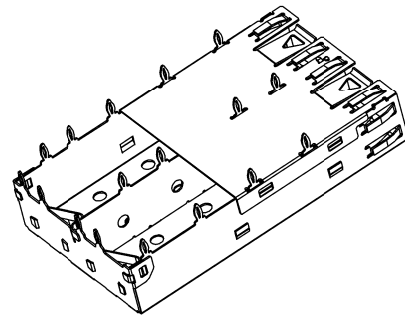
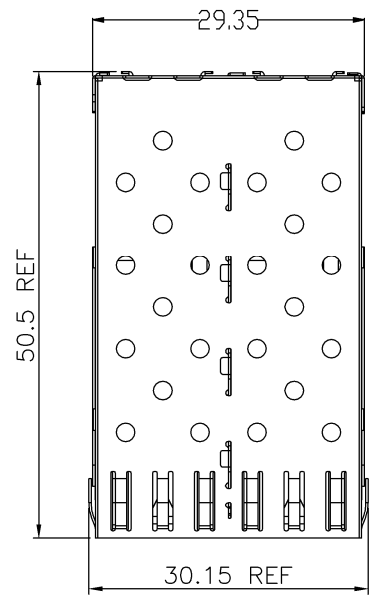


REV.	SPECIFICATION	ECN NO.	APPD.

Without Light Pipe

Material:
Cage: Copper Alloy.
Electrical Characteristics:
Operating Temperature: -40°C~+85°C.
***RoHS Compliant**

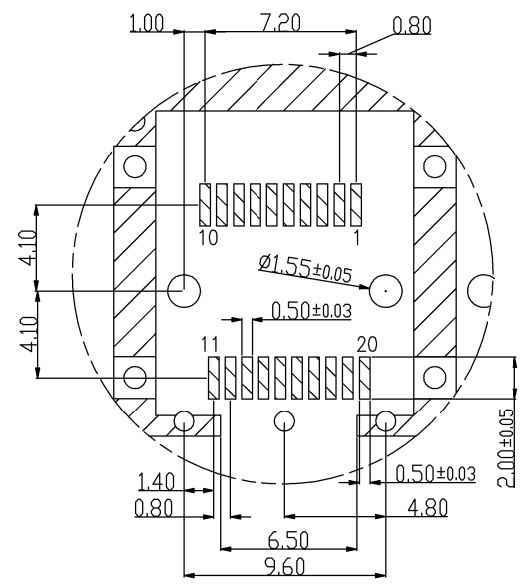
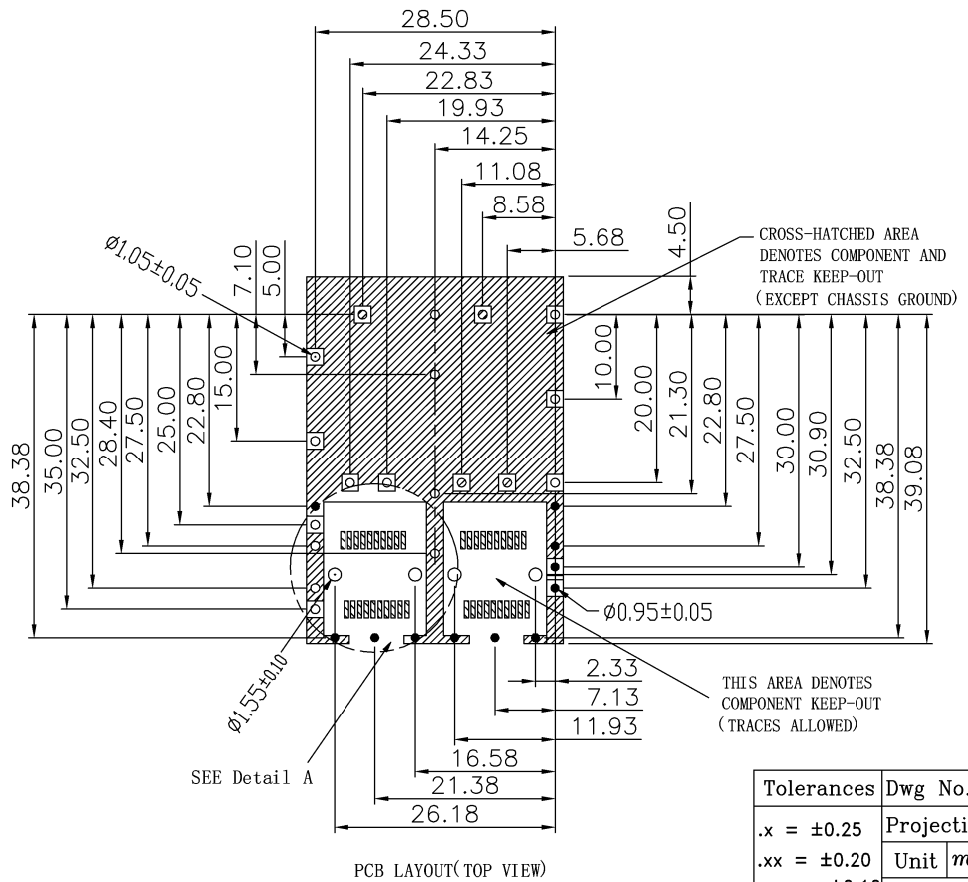
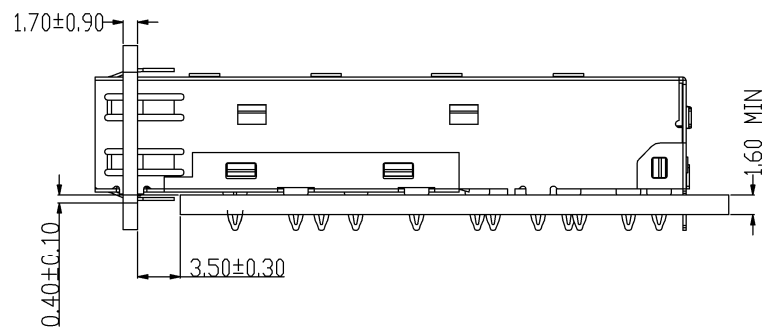
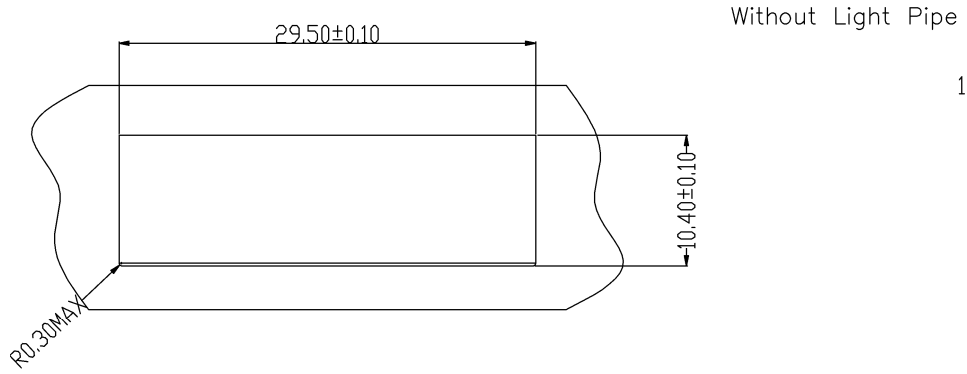


Series: 8951-E 2 P S x A
 2:2 Port
 P:Press Fit
 A:Tray Package
 0: Without Light Pipe
 1: With Light Pipe
 S:Spring

Tolerances	Dwg No.	S0220210806-02		Title:	OUPIIN OUPIIN ELECTRONIC(KUNSHAN) CO., LTD. P/N: 8951-E2PSxA SHEET 1/4 Ver.No. X1
.x = ±0.25	Projection			8951-E Series	
.xx = ±0.20	Unit	mm	Scale	SFP Cage, R/A	
.xxx = ±0.10	Drawn By	Martin	08/06'21	Press Fit Type, With Spring	

① 619

REV.	SPECIFICATION	ECN NO.	APPD.



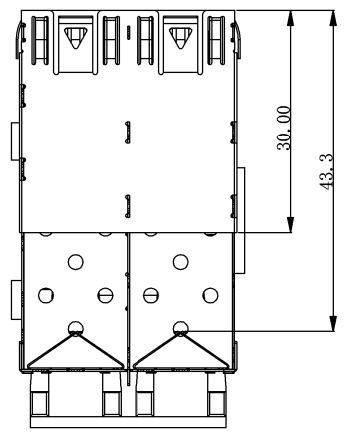
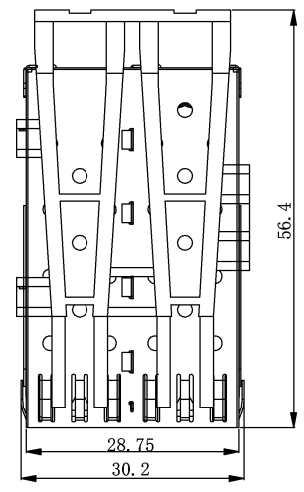
Tolerances	Dwg No.	S0220210806-02		Title:
.x = ±0.25	Projection			8951-E Series
.xx = ±0.20	Unit	mm	Scale	SFP Cage, R/A
.xxx = ±0.10	Drawn By	Martin	08/06'21	Press Fit Type, With Spring
				① 619

8951-E Series
SFP Cage, R/A
Press Fit Type, With Spring
① 619

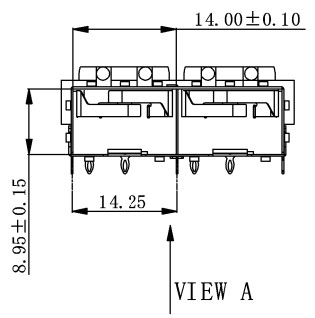
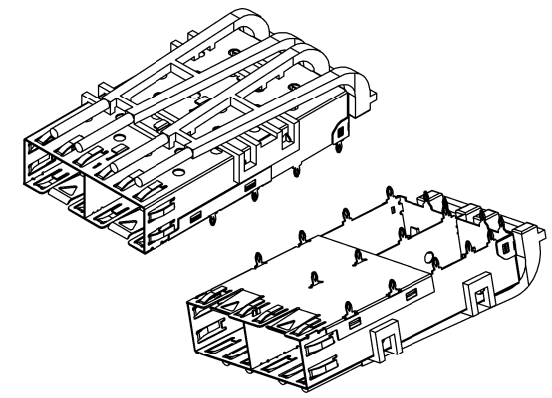
OUPIN ELECTRONIC(KUNSHAN) CO., LTD.			
P/N: 8951-E2PSxA			
SHEET	2/4	Ver.No.	X1

REV.	SPECIFICATION	ECN NO.	APPD.

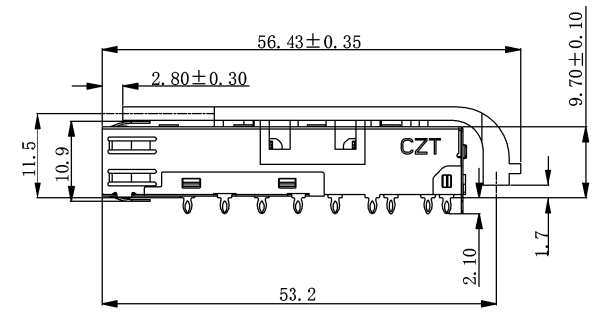
With Light Pipe


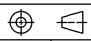


VIEW A

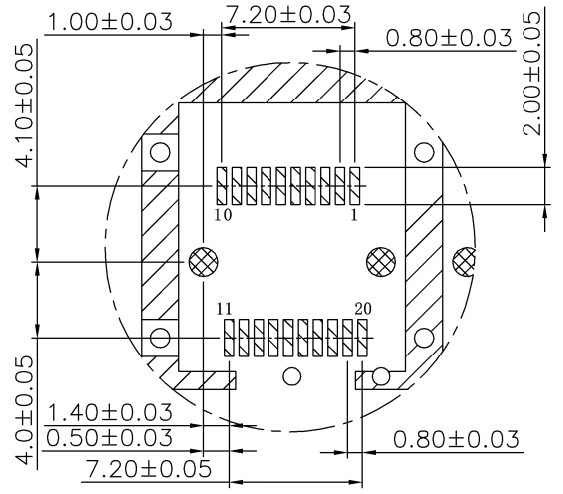
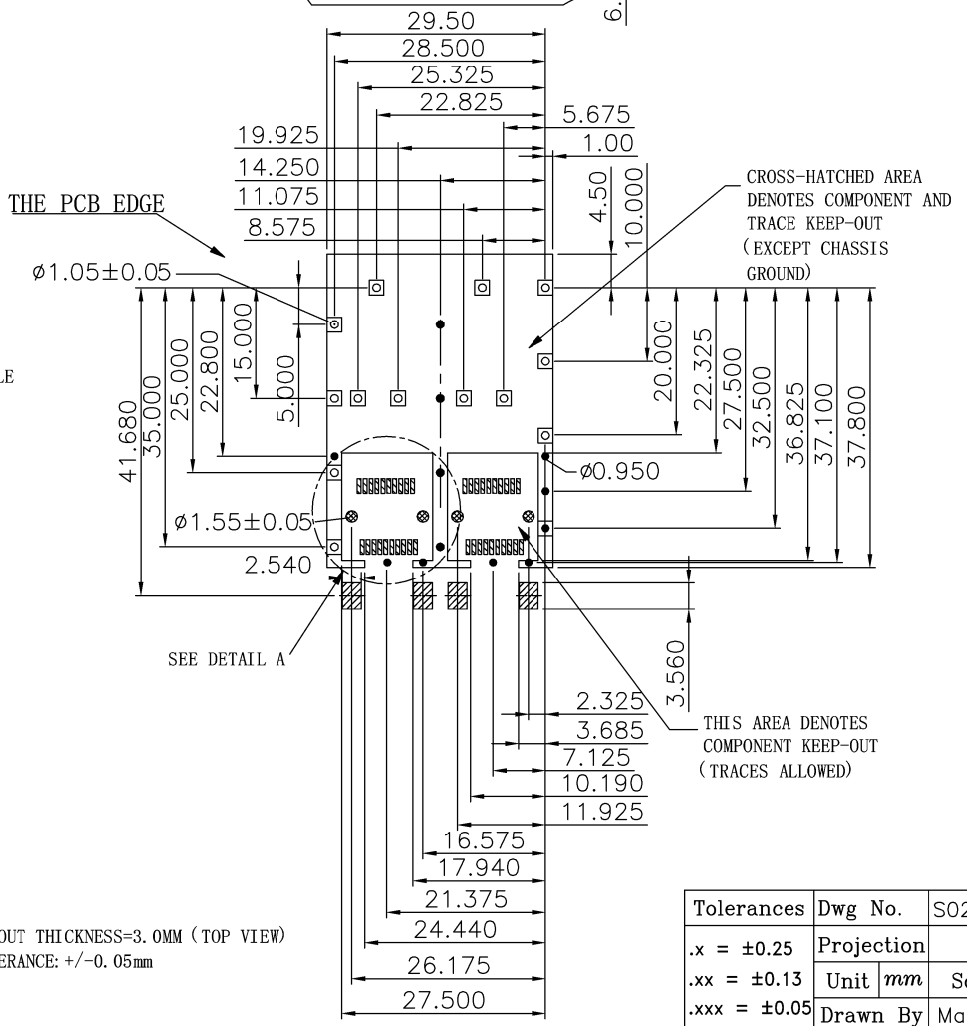
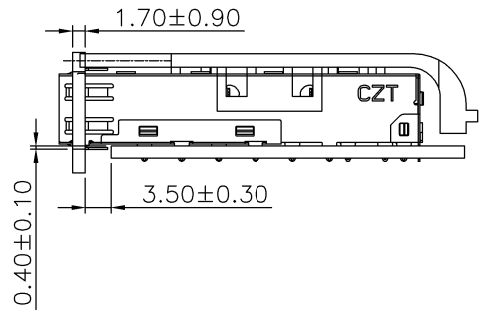
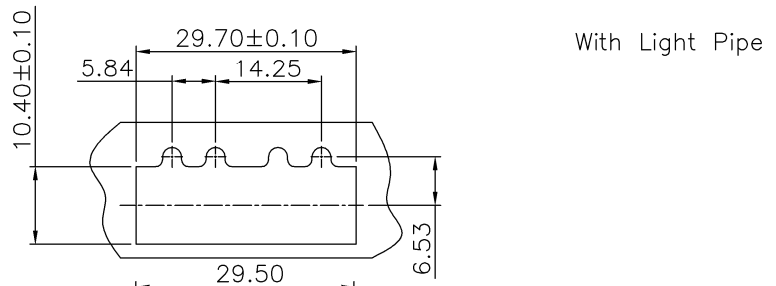


VIEW A



Tolerances	Dwg No.	S0220210806-02	Title:		 OUPIIN ELECTRONIC(KUNSHAN) CO., LTD. P/N: 8951-E2PSxA
.x = ±0.25	Projection		8951-E Series		
.xx = ±0.13	Unit	mm	Scale	1:N	
.xxx = ±0.10	Drawn By	Martin 08/06'21	SFP Cage, R/A		
			Press Fit Type, With Spring		SHEET
			① 619		3/4
					Ver.No.
					X1

REV.	SPECIFICATION	ECN NO.	APPD.
------	---------------	---------	-------



DIAMETER OF THE HOLE

- 1.05
- 0.95
- 1.55

PCB LAYOUT THICKNESS=3.0MM (TOP VIEW)
PCB TOLERANCE: +/-0.05mm

Tolerances	Dwg No.	S0220210806-02		Title:		OUPIIN ELECTRONIC(KUNSHAN) CO., LTD. P/N: 8951-E2PSxA SHEET 4/4 Ver.No. X1
.x = ±0.25	Projection			8951-E Series		
.xx = ±0.13	Unit	mm	Scale	SFP Cage, R/A		
.xxx = ±0.05	Drawn By	Martin	08/06'21	Press Fit Type, With Spring		
				① 619		