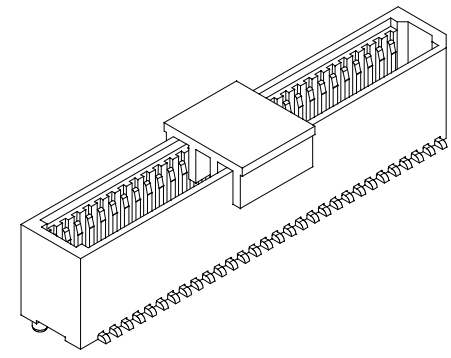
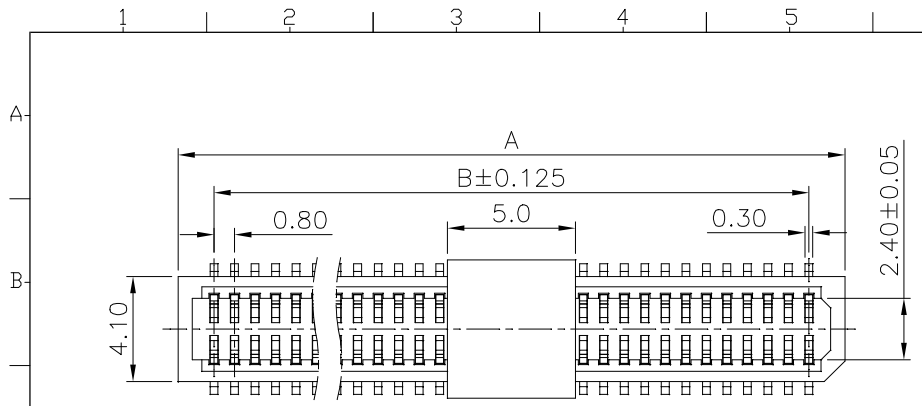
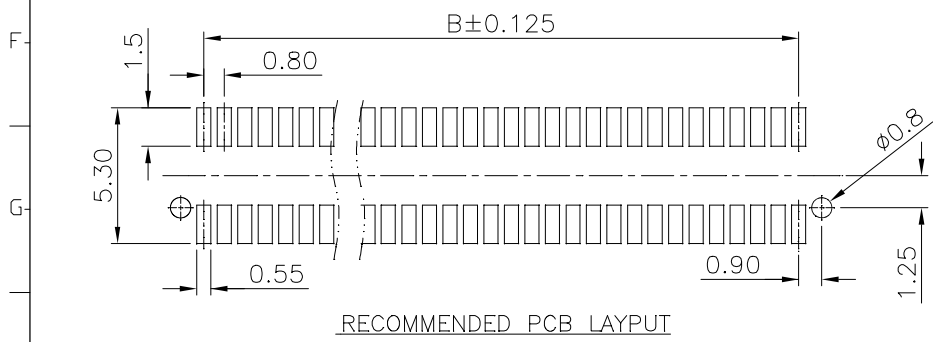
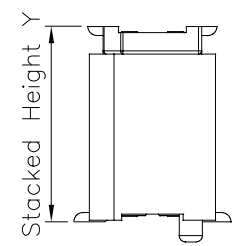
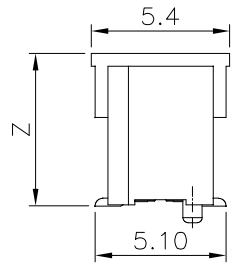
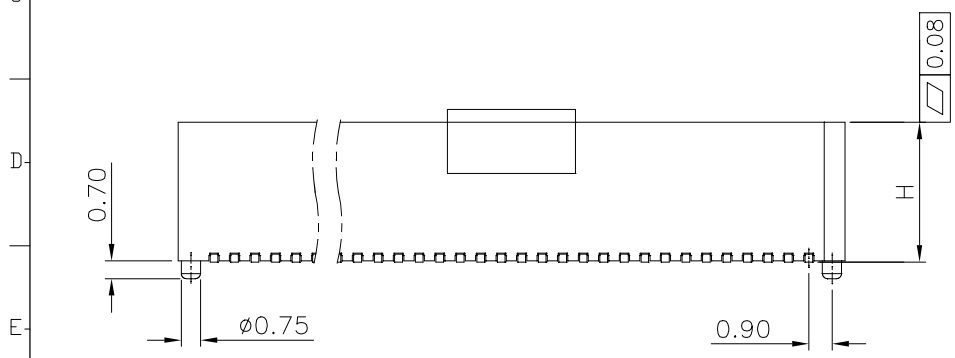


REV.	SPECIFICATION	ECN NO.	APPD.



**Material:**  
Housing: PA9T , UL94V-0.  
Contacts: Brass , Gold Plated on Contact Area and Gold Flash on solder tail over Nickel 50u".

**Electrical Characteristics:**  
Current Rating: 0.5 AMP.  
Dielectric Withstanding Voltage: AC 500V for 1 minute.  
Insulator Resistance: 100MΩ min.  
Contact Resistance: 40mΩ max.  
Operating Temperature: -55°C~+125°C.  
**\*RoHS Compliant**



**2383- xx F G 00 D x x T -P**

Series ———  
No. of ———  
Pin Count ———  
F:Female ———  
G:Gold Plated ———  
00:Gold Flash ———  
D:SMD Type ———

P:Cap  
T:Tape & Reel Package  
Code 1:3.55mm  
Code 2:5.05mm  
Code 3:5.45mm  
Code 4:6.05mm

P:With Post  
N:Without Post

Code:1~4(H)	1	2	3	4
Stacked Height Y	3.55	5.05	5.45	6.05
Z	4.05	5.55	5.95	6.55

Tolerances	Dwg No.	2383D02001
x = ±0.50	Projection	⊕ ↗
.x = ±0.38	Unit	mm
.xx = ±0.20	Scale	1:N
.xxx = ±0.10	Drawn By	Martin 12/27'24


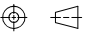
Title: 2383 Series  
0.8mm Board to Board  
Female Type

**OUPIIN**  
OUPIIN ELECTRONIC(KUNSHAN) CO., LTD.  
P/N: 2383-xxFG00DxxT-P

SHEET	1/2	Ver.No.	B1
-------	-----	---------	----

REV.	SPECIFICATION	ECN NO.	APPD.

Dimension							
Positions	A for Code 1,2,4	A for Code 3	B	Positions	A for Code 1,2,4	A for Code 3	B
10	6.40	6.00	3.20	56	24.80	24.40	21.60
12	7.20	6.80	4.00	58	25.60	25.20	22.40
14	8.00	7.60	4.80	60	26.40	26.00	23.20
16	8.80	8.40	5.60	62	27.20	26.80	24.00
18	9.60	9.20	6.40	64	28.00	27.60	24.80
20	10.40	10.00	7.20	66	28.80	28.40	25.60
22	11.20	10.80	8.00	68	29.60	29.20	26.40
24	12.00	11.60	8.80	70	30.40	30.00	27.20
26	12.80	12.40	9.60	72	31.20	30.80	28.00
28	13.60	13.20	10.40	74	32.00	31.60	28.80
30	14.40	14.00	11.20	76	32.80	32.40	29.60
32	15.20	14.80	12.00	78	33.60	33.20	30.40
34	16.00	15.60	12.80	80	34.40	34.00	31.20
36	16.80	16.40	13.60	82	35.20	34.80	32.00
38	17.60	17.20	14.40	84	36.00	35.60	32.80
40	18.40	18.00	15.20	86	36.80	36.40	33.60
42	19.20	18.80	16.00	88	37.60	37.20	34.40
44	20.00	19.60	16.80	90	38.40	38.00	35.20
46	20.80	20.40	17.60	92	39.20	38.80	36.00
48	21.60	21.20	18.40	94	40.00	39.60	36.80
50	22.40	22.00	19.20	96	40.80	40.40	37.60
52	23.20	22.80	20.00	98	41.60	41.20	38.40
54	24.00	23.60	20.80	100	42.40	42.00	39.20

Tolerances x = ±0.50 .x = ±0.38 .xx = ±0.20 .xxx = ±0.10	Dwg No.	2383D02001		Title: 2383 Series 0.8mm Board to Board Female Type ① 793	 <b>OUPIIN ELECTRONIC(KUNSHAN) CO., LTD.</b> P/N: 2383-xxFG00DxxT-P	
	Projection					
	Unit	mm	Scale			1:N
	Drawn By	Martin 12/27'24				SHEET