

Section:A-A
Scale:1:1

REV.	SPECIFICATION	ECN NO.	APPD.
R8		ECN241005	

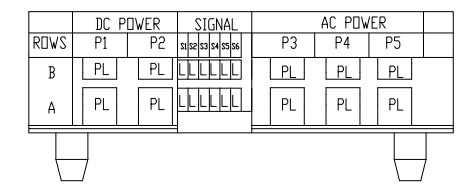
Material and Plating:

Housing: LCP, UL94V-0, Black.
 Cover: LCP, UL94V-0, Black.
 Power Contacts: High Conductivity Copper .
 30u" Au+Pd/Ni on Contact Area and 80u" Min Tin
 Plated on Solder Tail over 50u" Min Nickel.
 Signal Contacts: Phosphor Bronze .
 30u" Au+Pd/Ni on Contact Area and 80u" Min Tin
 Plated on Solder Tail over 50u" Min Nickel.

Electrical Characteristics:

Current Rating: 1 AMP/Signal pin.
 18 AMP/AC Power pin(UL) .
 90 AMP/DC Power pin.(UL)
 Dielectric Withstanding Voltage: DC Power: 1500V For 1 minute.
 AC Power: 2000V For 1 minute.
 Signal Pin: 1000V For 1 minute.
 Insulator Resistance: Power:5000MΩ min.
 Signal:500MΩ min.
 Contact Resistance: DC Power pin: 1mΩ max.
 AC Power pin : 5mΩ max.
 Signal pin: 25mΩ max.
 Operating Temperature: -40°C ~+115°C .

***RoHS Compliant**



POWER CONTACT TO THE A FACE DISTANCE 8.5mm.	PL
SIGNAL CONTACT TO THE A FACE DISTANCE 8.5mm.	L

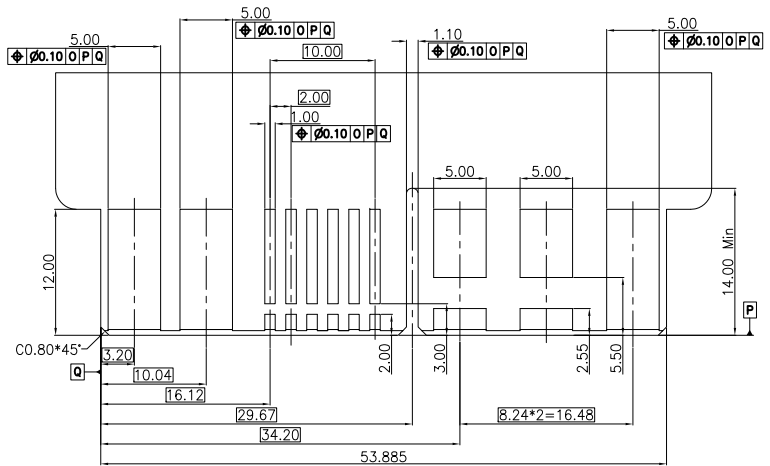
9394 - 4 A3 P x 1 1 A CB 30 D A

Series —
 4:Female -Right Angle —
 A3:Type A3 —
 See Table —
 P:With Post:4.5mm —
 1: DIM T=3.0mm —
 2: DIM T=2.60mm —
 DIM GAP=1.0mm —

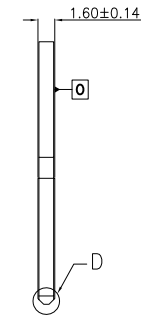
—A:Tray Package
 —D: Dip Type
 —30: 30 u"
 —CB: Contact Au+Pd/Ni,Dip Tin
 —C: Selective Gold Plated
 —G: Gold Plated
 —A:Signal Pitch 2.0mm
 —B:Signal Pitch 2.54mm
 —1:W/O Left Key,With Right Key

Tolerances	Dwg. No.	9394-00000-009	Title:		 OUPIIN ELECTRONIC(KUNSHAN) CO., LTD. P/N: 9394-4A3P×11ACB30DA
x.=±0.50	Projection		9394 Series		
.x=±0.25	Unit	mm	HYBRID POWER		
.xx=±0.15	Scale	1:1	CARD EDGE DIP TYPE		SHEET
.xxx=±0.15	Drawn By	SXH 10/11'24	LOW PROFILE		1/2
					Ver.No.
					R8

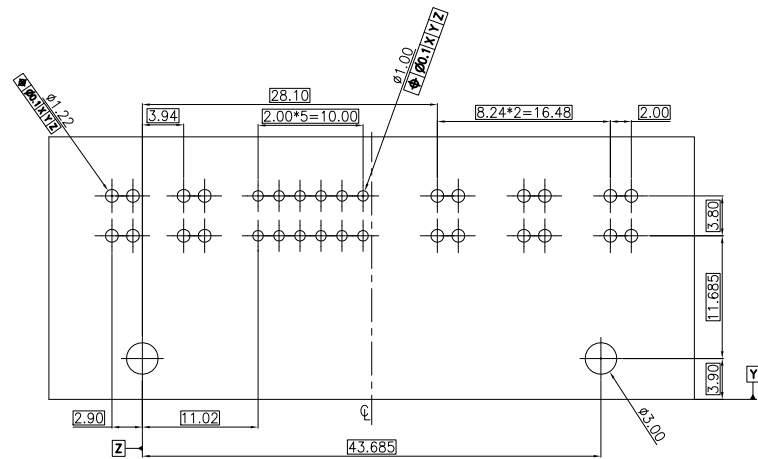
REV.	SPECIFICATION	ECN NO.	APPD.
R8		ECN241005	



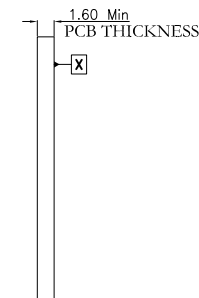
RECOMMENDED MATTING BOARD FOOTPRINT
(Tolerance: ± 0.05)



Detail D
(Scale 2:1)



P.C. Board Layout
(Tolerance: ± 0.05)



Tolerances	Dwg. No.	9394-00000-009
x.= ± 0.50	Projection	
.x.= ± 0.25	Unit	mm
.xx= ± 0.15	Scale	1:1
.xxx= ± 0.15	Drawn By	SXH 10/11'24

Title:
9394 Series
HYBRID POWER
CARD EDGE DIP TYPE
LOW PROFILE

OUPIIN ELECTRONIC(KUNSHAN) CO., LTD.			
P/N: 9394-4A3Px11ACB30DA			
SHEET	2/2	Ver.No.	R8