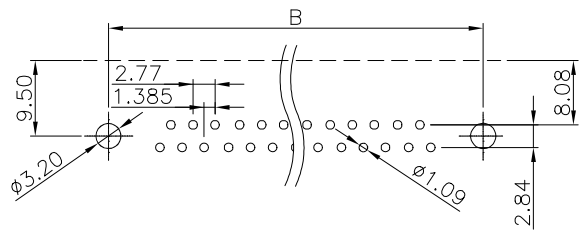
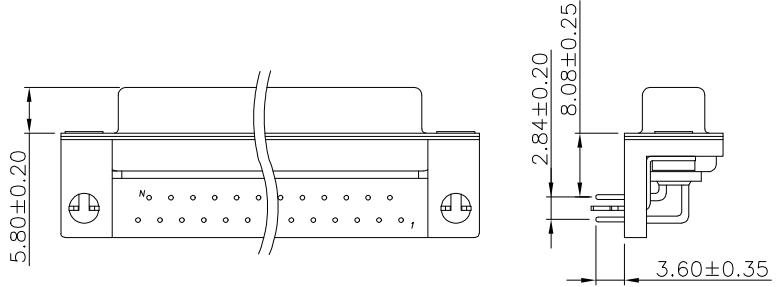
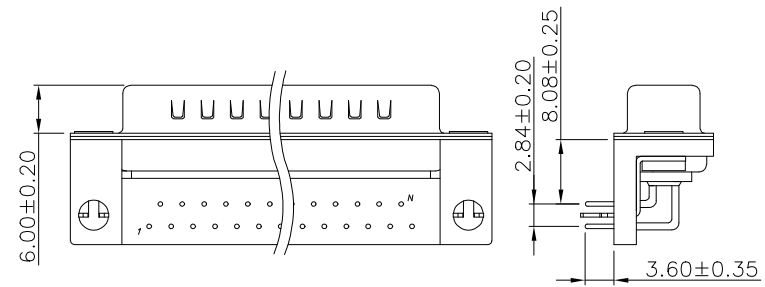
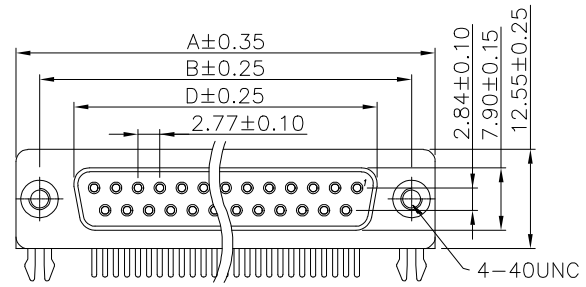
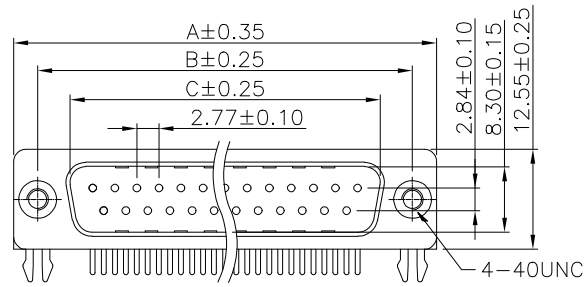


REV.	SPECIFICATION	ECN NO.	APPD.

Male

Female

Material:
Housing: PBT, UL94V-0, Black.
Contacts: Brass, Gold Plated over Nickel 50u".
Front Shell: Steel, Nickel Plated over Copper 50u".
Back Shell: Steel, Tin Plated over Copper 50u".
Electrical Characteristics:
Current Rating: 5A.
Dielectric Withstanding Voltage: AC 500V.
Insulation Resistance: 1000MΩ min.
Contact Resistance: 30mΩ max.
Operating Temperature: -50°C~+105°C.
***RoHS Compliant**



P.C.B LAYOUT

Series: 7906-A xx M B N5 A
Positions: xx M B N5 A
M: Male F: Female
A: Tray Package
N5: Machine Pin
B: With Grounding Forks and With Riveted Threaded Inserts

Positions	A	B	C	D
09	30.81	24.99	16.92	16.33
15	39.20	33.32	25.25	24.80
25	53.04	47.04	38.96	38.38
37	69.40	63.50	55.42	54.84

Tolerances	Dwg No.	S0320230913-01		Title:
x. = ±0.38	Projection			7906-A Series
.x = ±0.25	Unit	mm	Scale	D-SUB Right Angle Type
.xx = ±0.13	Drawn By	Martin	01/05'24	747

OUPIIN
OUPIIN ELECTRONIC(KUNSHAN) CO., LTD.
P/N:7906-AxxMBN5A&7906-AxxFBN5A

SHEET	1/1	Ver.No.	X2
-------	-----	---------	----