

| | | | |
|------|---------------|---------|-------|
| REV. | SPECIFICATION | ECN NO. | APPD. |
| X3 | | | |

Material and Plating:
Housing: LCP, UL94V-0, Black.
Cover: LCP, UL94V-0, Black.
Power Contacts: High Conductivity Copper .
30u" Au+Pd/Ni on Contact Area and 80u" Min Tin Plated on Solder Tail over 50u" Min Nickel.
Signal Contacts: Phosphor Bronze .
30u" Au+Pd/Ni on Contact Area and 80u" Min Tin Plated on Solder Tail over 50u" Min Nickel.

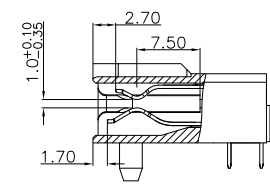
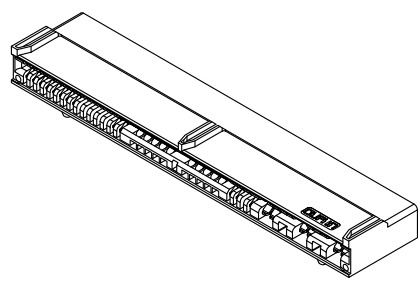
Electrical Characteristics:
Current Rating: 1 AMP/Signal pin.
25 AMP/AC Power pin .(UL)
100 AMP/DC Power pin. (UL)
Dielectric Withstanding Voltage: DC Power: 2000V For 1 minute.
AC Power: 2000V For 1 minute.
Signal Pin: 500V For 1 minute.
Between AC Power pin and PE Power pin:
2000 VAC For 1 minute.
Between PE Power pin and Signal pin:
1000 VAC For 1 minute.

Insulator Resistance: Power:5000MΩ min.
Signal: 500MΩ min.
Between all power conductors 500MΩ min.
Contact Resistance: Power pin : AC Power:5mΩ max
DC Power:1mΩ max.
Signal pin : 25mΩ max.
Operating Temperature: -40°C~+115°C.

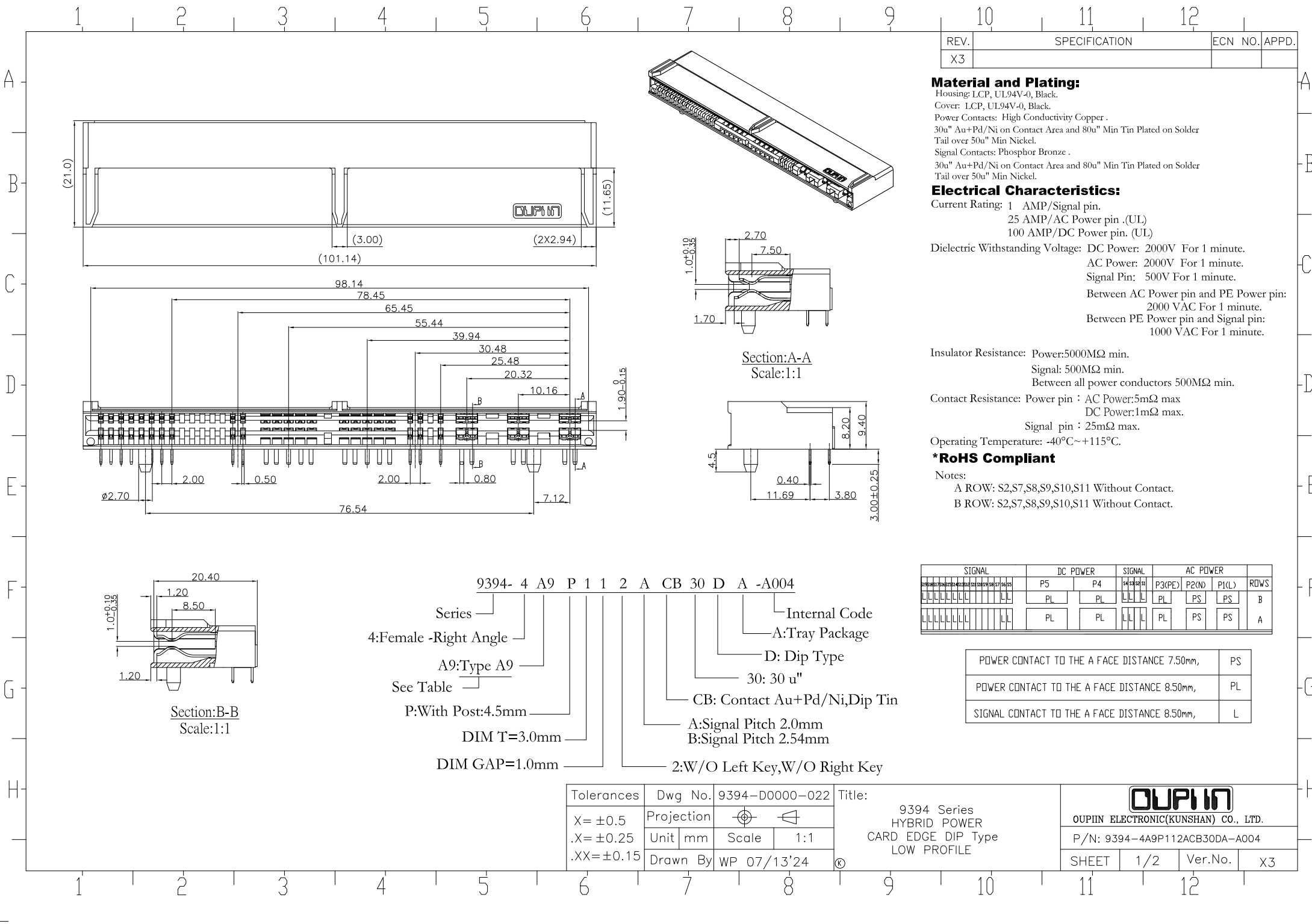
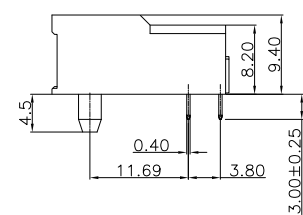
***RoHS Compliant**
Notes:
A ROW: S2,S7,S8,S9,S10,S11 Without Contact.
B ROW: S2,S7,S8,S9,S10,S11 Without Contact.

| SIGNAL | DC POWER | SIGNAL | AC POWER | ROWS |
|--------|----------|--------|----------|-------|
| P5 | P4 | P3(PE) | P2(N) | P1(L) |
| PL | PL | PL | PS | PS |
| PL | PL | PL | PS | PS |

| | |
|---|----|
| POWER CONTACT TO THE A FACE DISTANCE 7.50mm, | PS |
| POWER CONTACT TO THE A FACE DISTANCE 8.50mm, | PL |
| SIGNAL CONTACT TO THE A FACE DISTANCE 8.50mm, | L |



Section:A-A
Scale:1:1



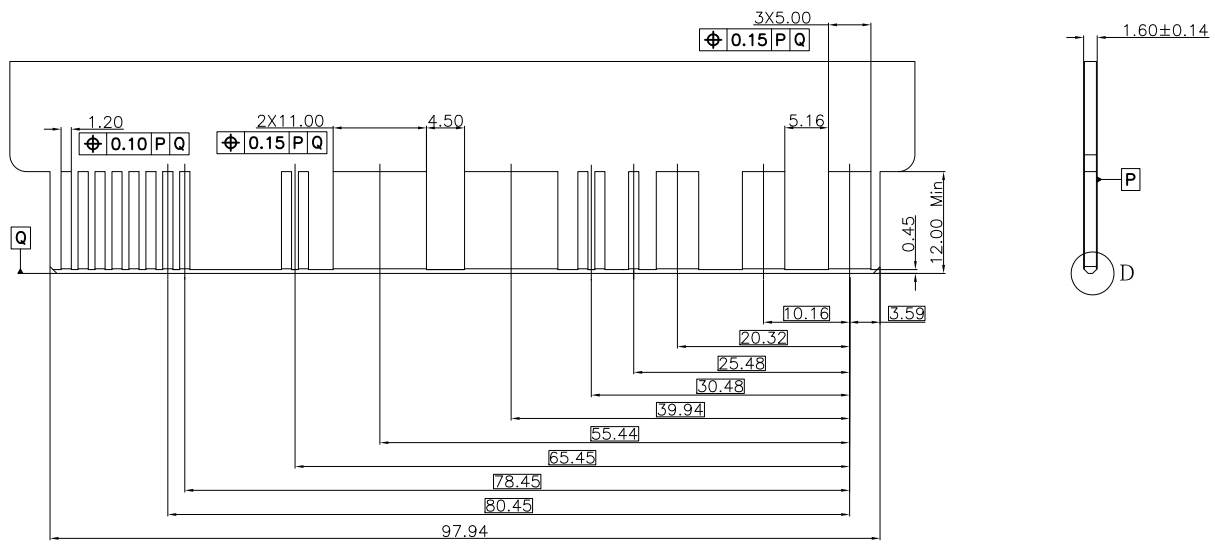
9394- 4 A9 P 1 1 2 A CB 30 D A -A004

Series
4:Female -Right Angle
A9:Type A9
See Table
P:With Post:4.5mm
DIM T=3.0mm
DIM GAP=1.0mm

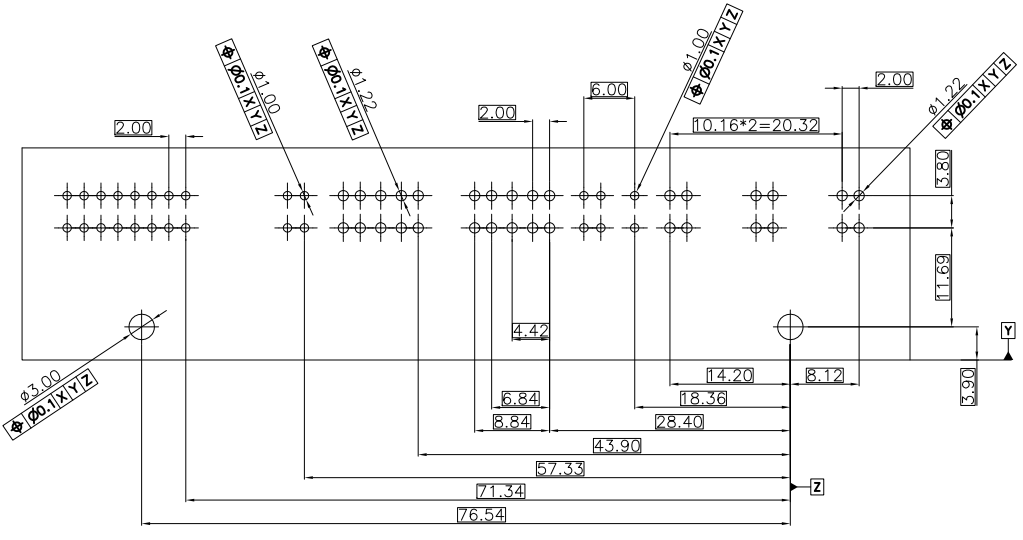
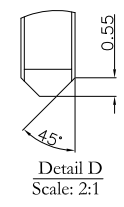
Internal Code
A:Tray Package
D: Dip Type
30: 30 u"
CB: Contact Au+Pd/Ni,Dip Tin
A:Signal Pitch 2.0mm
B:Signal Pitch 2.54mm
2:W/O Left Key,W/O Right Key

| | | | | | | | |
|------------|------------|----------------|--------|---|--|--|--|
| Tolerances | Dwg No. | 9394-D0000-022 | Title: | 9394 Series HYBRID POWER CARD EDGE DIP Type LOW PROFILE | | | |
| X=±0.5 | Projection | | Scale | 1:1 | OUPIN ELECTRONIC(KUNSHAN) CO., LTD. P/N: 9394-4A9P112ACB30DA-A004 SHEET 1/2 Ver.No. X3 | | |
| .X=±0.25 | Unit | mm | Scale | 1:1 | | | |
| .XX=±0.15 | Drawn By | WP 07/13'24 | Scale | 1:1 | | | |

| | | | |
|------|---------------|---------|-------|
| REV. | SPECIFICATION | ECN NO. | APPD. |
| X3 | | | |



Recommended Edge Card Layout
(Tolerance:±0.05)



P.C. Board Layout
(Tolerance:±0.05)

| | | | | |
|------------|------------|----------------|-----------|--|
| Tolerances | Dwg No. | 9394-D0000-022 | | Title: 9394 Series HYBRID POWER CARD EDGE DIP Type LOW PROFILE |
| X=±0.5 | Projection | | | |
| .X=±0.25 | Unit | mm | Scale 1:1 | |
| .XX=±0.15 | Drawn By | WP 07/13'24 | | |

| | | | |
|-------------------------------------|-----|---------|----|
| OUPIN | | | |
| OUPIN ELECTRONIC(KUNSHAN) CO., LTD. | | | |
| P/N: 9394-4A9P112ACB30DA-A004 | | | |
| SHEET | 2/2 | Ver.No. | X3 |