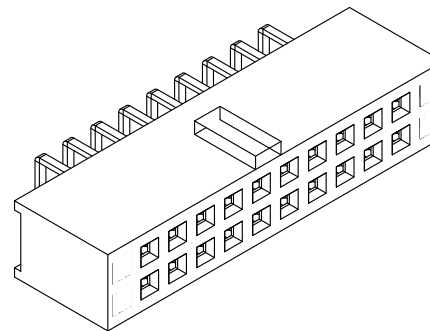
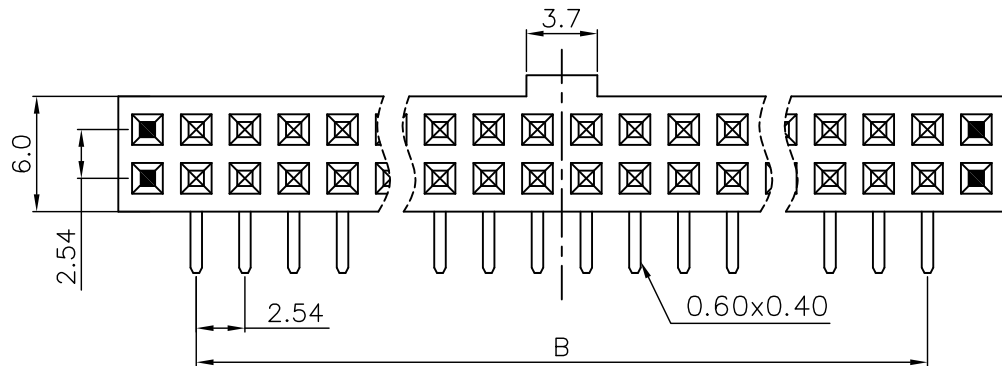


REV.	SPECIFICATION	ECN NO.	APPD.
R2			



Material:

Housing: Thermoplastic Polyester Glass Filled UL94V-0.

Contacts: Copper Alloy.

Electrical Characteristics:

Current Rating: 2 AMP.

Dielectric Withstanding Voltage : AC 1000V For 1 minute.

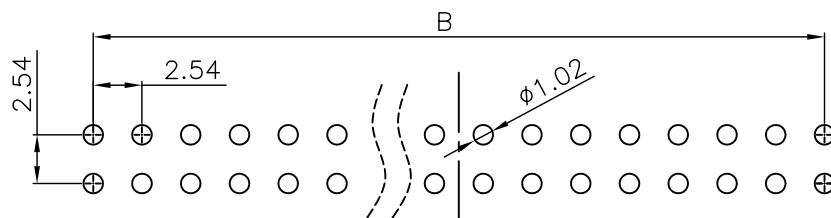
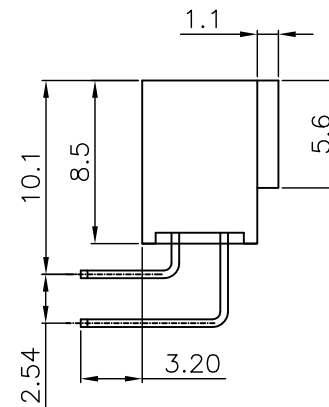
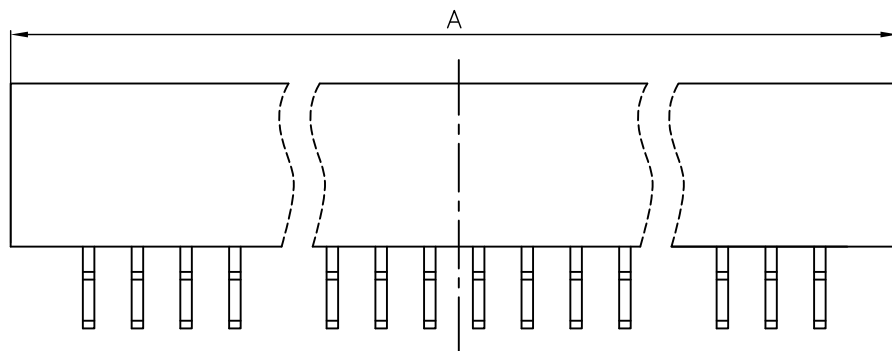
Insulator Resistance: 1000MΩ min. at DC 500V.

Contact Resistance: 20mΩ max. at DC 100mA.

Operating Temperature: -55°C ~+105°C .

***RoHS Complaint**

Insertion Depth: 2.55mm to 5.70mm.



P.C. Board Layout
(Tolerance:±0.05)

2046- xx G xx R A
 Series — xx — G — xx — R — A
 No.of Contacts —
 G: Gold Plated —
 T: Tin Plated —
 A: Tray Package
 B: Bulk Package
 R: Right Angle

00: G/F
 10: 10 μ"
 15: 15 μ"
 30: 30 μ"

Position	6 Thru 64
Dimension	
A	2.54 X (No. of Position+4)/2
B	2.54 X (No. of Position)/2-2.54

Tolerances	Drawn No.	2046-D0000-002
x = ±0.5 .x = ±0.25 .xx = ±0.15	Projection	
	Unit	mm
	Scale	1:1
	Drawn By	Lupa 12/31'10

Title: 2046 Series
 P.C.B. Socket 2.54mmX2.54mm
 (0.100"X0.100")

OUPIN			
OUPIN ELECTRONIC(KUNSHAN) CO., LTD.			
P/N: 2046-xxGxxRA			
SHEET	1/1	Ver.No.	R2