

REV.	SPECIFICATION	ECN NO.	APPD.
R5		ECN210723	

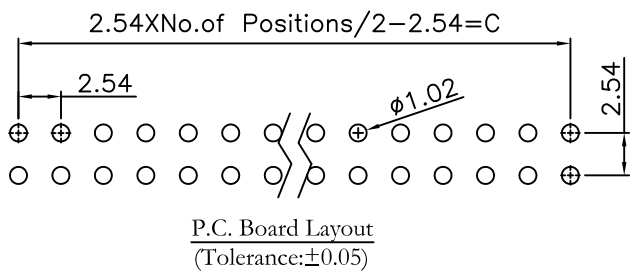
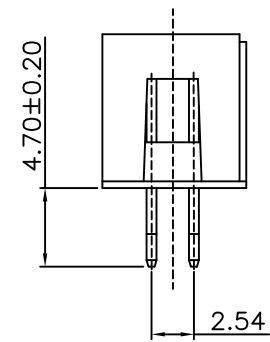
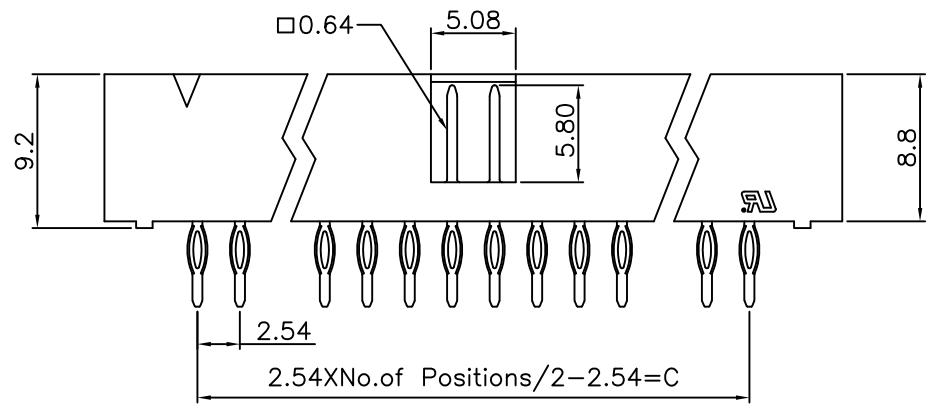
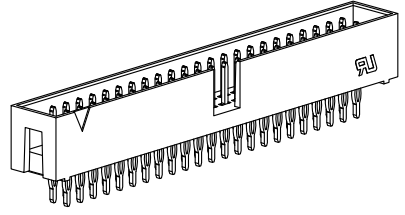
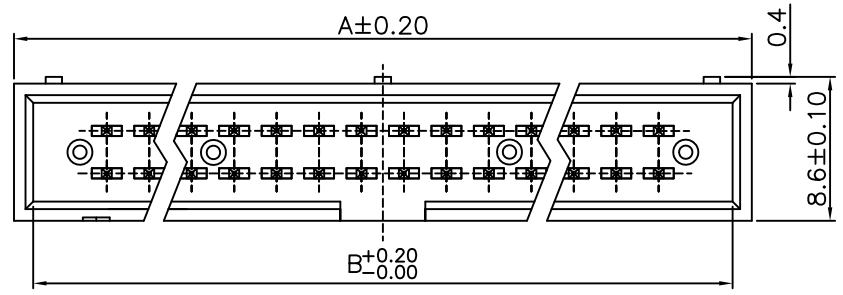
**Material and Plating:**

Housing: PBT, UL94V-0 , Black or Grey .  
 Contacts: Brass.  
 Gold Plated or 80u" Min Tin on Contact Area and 80u" Min Tin or Gold Flash Plated on solder tail over 50u" Min Nickel.

**Electrical Characteristics:**

Current Rating: 2 AMP.  
 Dielectric Withstanding Voltage: AC 1000V For 1 Minute.  
 Insulator Resistance: 1000MΩ min. at DC 500V.  
 Contact Resistance: 20mΩ max. at DC 100mA.  
 Operating Temperature: -40°C~+105°C.

**\*RoHS Compliant**



3012- xx G xx S P B A

Series  
 No. of Pin Count  
 G: Gold Plated  
 C: Selective Gold Plated  
 T: Tin Plated  
 A: Tray Package  
 B: Black  
 Y: Grey  
 P: Press Fit Type  
 S: Straight  
 00: G/F  
 10: 10μ"  
 15: 15μ"  
 30: 30μ"

"*" Available Position				
Position	Dimension			
	A	B	C±0.10	
*	10	20.34	18.10	10.16
*	14	25.48	23.18	15.24
*	16	27.90	25.72	17.78
*	20	33.05	30.80	22.86
*	26	40.68	38.42	30.48
*	30	45.70	43.50	35.56
*	34	50.80	48.58	40.64
*	40	58.46	56.20	48.26

Tolerances	Dwg. No.	3012-D0000-001	Title:	
x = ±0.5	Projection		3012 Series	
.x = ±0.25	Unit	mm	Box Header 2.54mm(0.100")	
.xx = ±0.15	Scale	1:1		
	Drawn By	WP 07/19'21		

**OUPIN**  
 OUPIN ELECTRONIC(KUNSHAN) CO., LTD.  
 P/N: 3012-xxGxxSPBA  
 SHEET 1/2 Ver.No. R5

REV.	SPECIFICATION	ECN NO.	APPD.
R5		ECN210723	

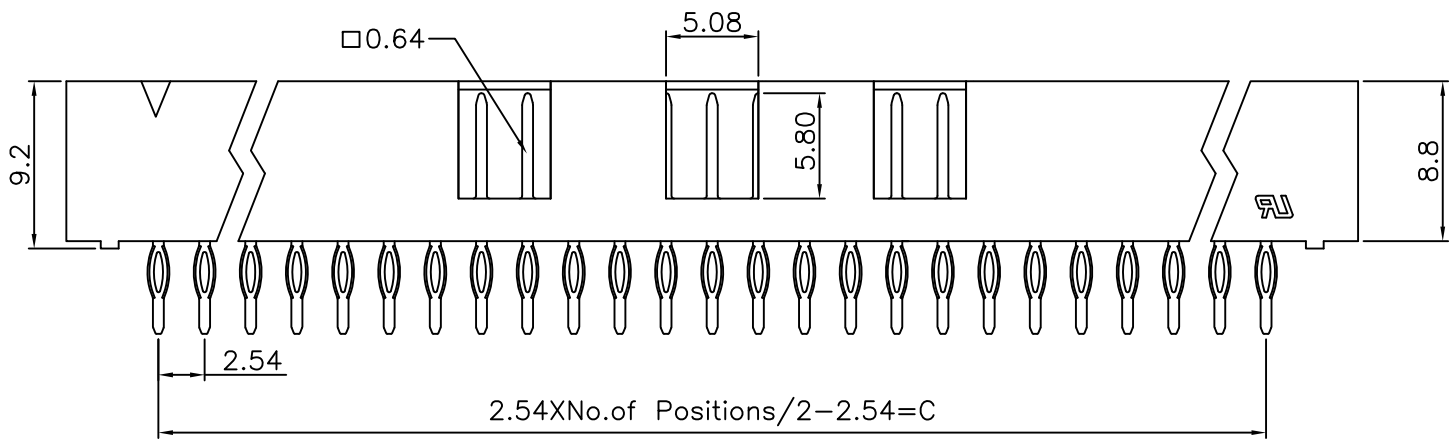
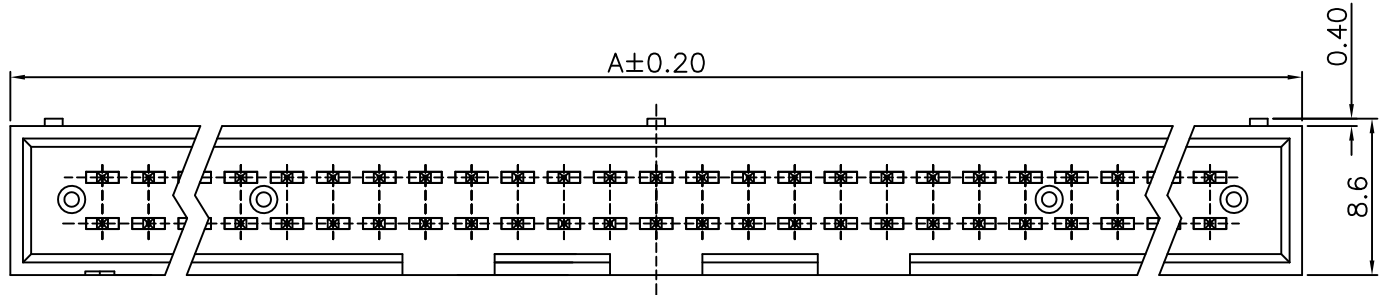
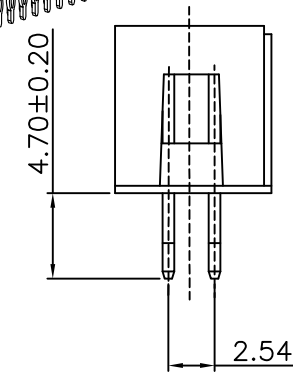
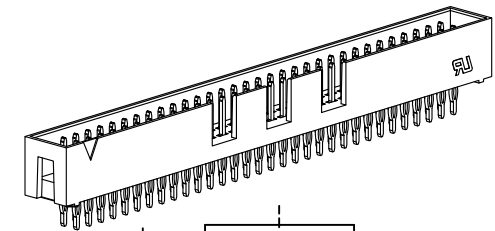
**Material and Plating:**

Housing: PBT, UL94V-0, Black or Grey.  
 Contacts: Brass.  
 Gold Plated or 80u" Min Tin on Contact Area and 80u" Min Tin or Gold Flash Plated on solder tail over 50u" Min Nickel.

**Electrical Characteristics:**

Current Rating: 2 AMP.  
 Dielectric Withstanding Voltage: AC 1000V For 1 Minute.  
 Insulator Resistance: 1000MΩ min. at DC 500V.  
 Contact Resistance: 20mΩ max. at DC 100mA.  
 Operating Temperature: -40°C~+105°C.

**\*RoHS Compliant**



"*" Available Position				
Position	Dimension			
	A	B	C±0.10	
50	71.10	68.90	60.96	
60	83.80	81.60	73.66	
*	64	89.10	86.68	

<b>Tolerances</b>	<b>Dwg. No.</b>	3012-D0000-001	<b>Title:</b>	
x = ±0.5	<b>Projection</b>		3012 Series	
.x = ±0.25	<b>Unit</b>	mm	<b>Scale</b>	1:1
.xx = ±0.15	<b>Drawn By</b>	WP 07/19'21	Box Header 2.54mm(0.100")	

**OUPIN**  
**OUPIN ELECTRONIC(KUNSHAN) CO., LTD.**  
**P/N: 3012-xxGxxSPBA**  
**SHEET 2/2 Ver.No. R5**