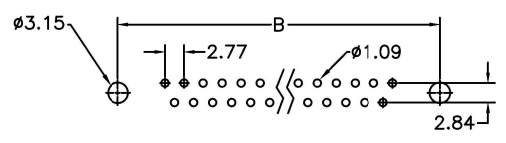
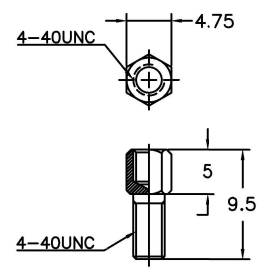
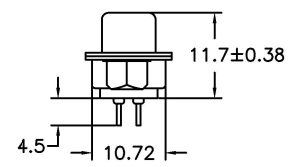
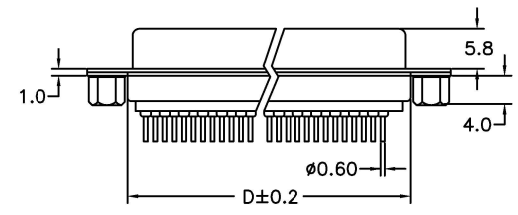
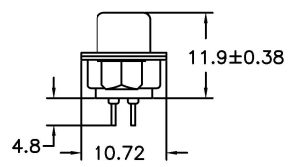
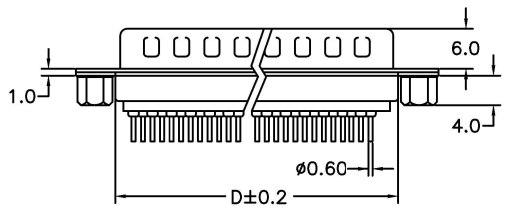
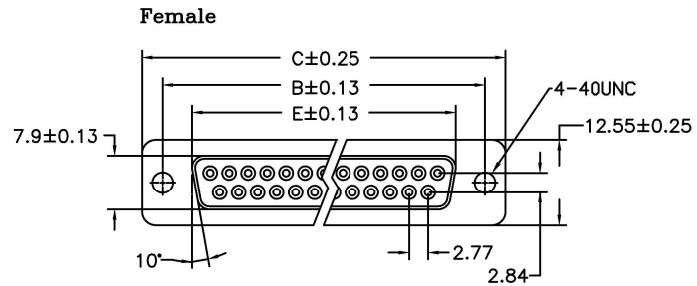
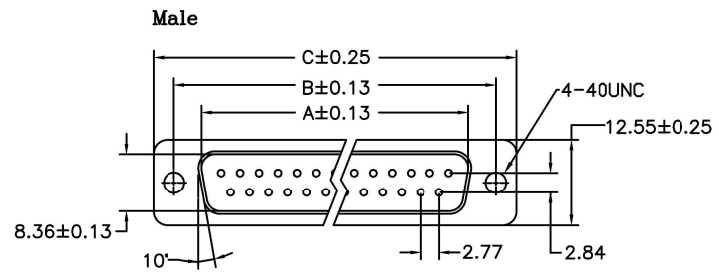


REV.	SPECIFICATION	ECN NO.	APPD.

Material:
Housing: PBT, UL94V-0.
Contacts: Brass, Gold Plated over Nickel 30u" Min.
Shell: Steel.

Electrical Characteristics:
Current Rating: 1 AMP.
Dielectric Withstanding Voltage: AC 1000V.
Insulation Resistance: 1000MΩ min.
Contact Resistance: 20mΩ max.
Operating Temperature: -55°C~+105°C.
***RoHS Compliant**



P.C. Board Layout

7905- xx x T B G 00 N2N7 A

Series ———
Position ———
M: Male
F: Female
B: Black
U: Blue
W: White

A: Tray Package
N2N7: With NUTS 4-40UNC
Threaded Riveted
On Rear Side
With Jack Screws are Bagged
Separately

00: Gold Flash
G: Gold Plated

Position	A	B	C	D	E
9	16.90	25.00	30.80	19.28	16.33
15	25.25	33.30	39.20	27.51	24.66
25	38.95	47.05	53.05	41.30	38.38
37	55.40	63.50	69.40	57.71	54.84

Tolerances	Dwg. No.	7905D03021	
x = ±0.5	Projection	⊕ ⊖	
.x = ±0.25	Unit	mm	Scale 1:N
.xx = ±0.15	Drawn By	Sherry08/01'19	

Title: 7905 Series
D-SUB Straight Type

OUPIN			
OUPIN ELECTRONIC(KUNSHAN) CO., LTD.			
P/N: 7905-xxMTBG00N2N7A& 7905-xxFTBG00N2N7A			
SHEET	1/1	Ver.No.	A1

Q 767