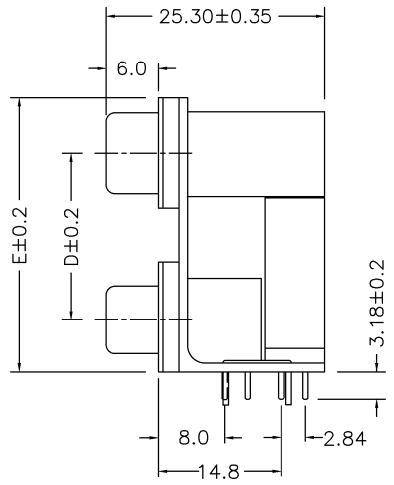
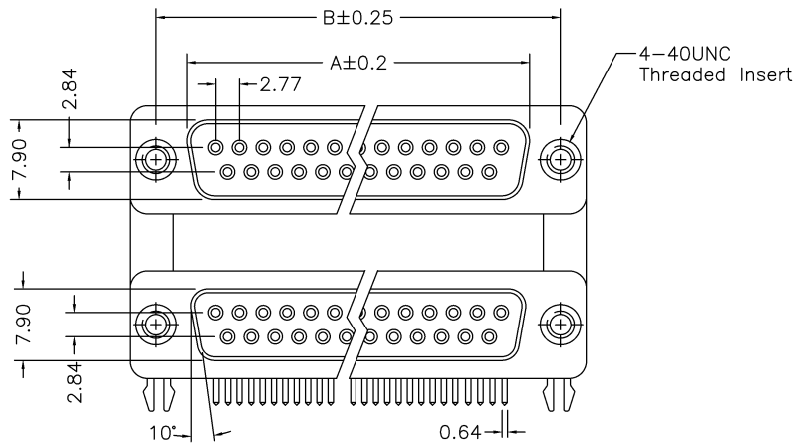


REV.	SPECIFICATION	ECN NO.	APPD.



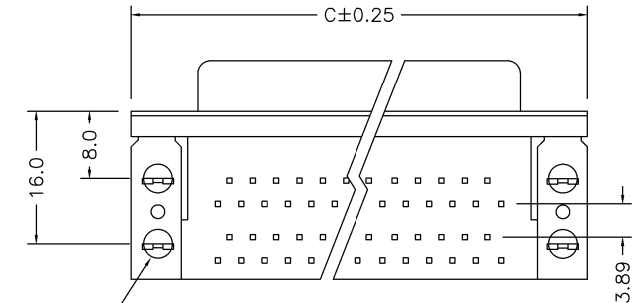
Material:

Housing: PBT, UL94V-0, Black.
 Contacts: Brass, Gold Plated over 30u" Nickel Plated.
 Shell: Steel.

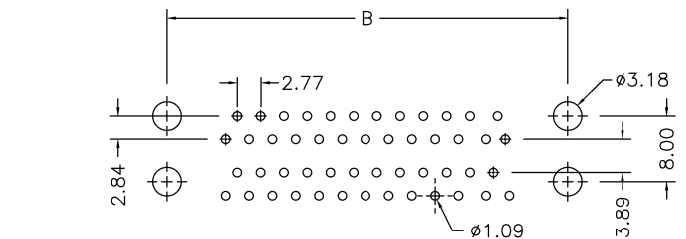
Electrical Characteristics:

Current Rating: 1 AMP.
 Dielectric Withstanding Voltage: AC 1000V.
 Insulator Resistance: 1000MΩ min.
 Contact Resistance: 30mΩ max.
 Operating Temperature: -20°C~+70°C.

***RoHS Compliant**



7936- xx F F B x A
 Series Position F: Female Top F: Female Bottom B: Grounding Fork 1:15.88 See Dim:D 2:19.05 See Dim:D A:Tray Package



P.C. Board Layout

Position	Dimension						
	A	B	C	D	E	F	G
9	16.32	24.99	30.81	15.88	19.05	28.43	31.60
15	24.66	33.32	39.14	15.88	19.05	28.43	31.60
25	38.38	47.04	53.04	15.88	19.05	28.43	31.60
37	54.84	63.50	69.32	15.88	19.05	28.43	31.60

Tolerances	Dwg. No.	7936D02004	Title:	7936 Series D-SUB Double Port Right Angle Type	
x = ±0.5	Projection		512		
.x = ±0.25	Unit	mm			Scale
.xx = ±0.15	Drawn By	Martin 09/28'22			

OUPIIN
 OUPIIN ELECTRONIC(KUNSHAN) CO., LTD.
 P/N: 7936-xxFFBxA
 SHEET 1/1 Ver.No. A5