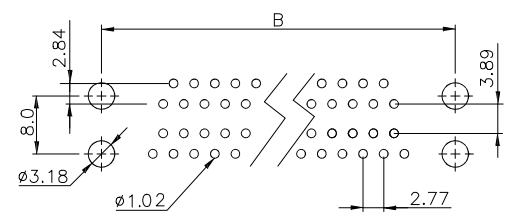
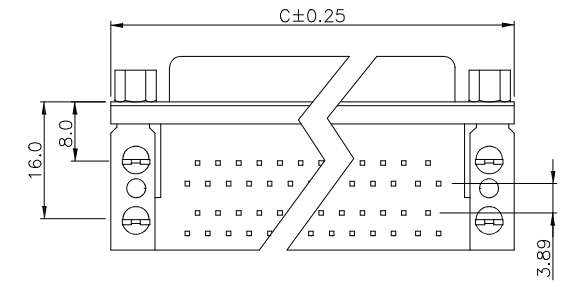
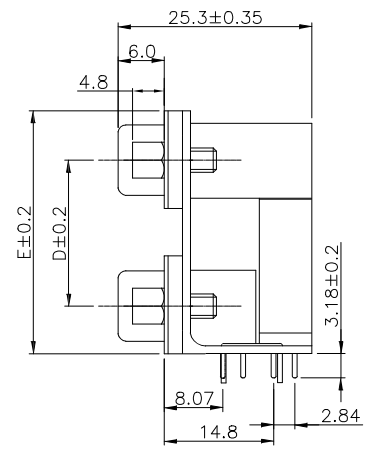
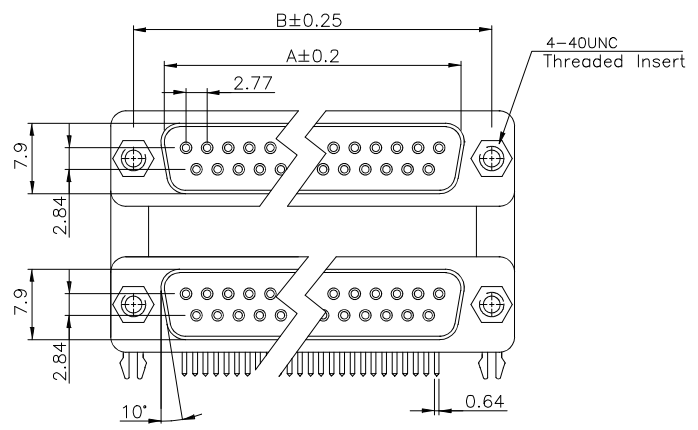


REV.	SPECIFICATION	ECN NO.	APPD.



P.C.Board Layout

Material:
Housing: PBT, UL94V-0, Black.
Contacts: Brass, Gold Plated over Nickel 30u".
Shell: Steel.
Electrical Characteristics:
Current Rating: 1 AMP.
Dielectric Withstanding Voltage: AC 1000V.
Insulation Resistance: 1000MΩ min.
Contact Resistance: 30mΩ max.
Operating Temperature: -20°C~+70°C.
***RoHS Compliant**

7936- xx F F Y x A
Series
No. of Position
F: Female Top
F: Female Bottom
Y: Grounding Fork, Jack Screw Attached
A: Tray Package
1.15.88 See Dim:D
2.19.05 See Dim:D

Position	A	B	C	D		E	
9	16.30	25.00	30.80	15.88	19.05	28.43	31.60
15	24.60	33.30	39.20	15.88	19.05	28.43	31.60
25	38.40	47.05	53.05	15.88	19.05	28.43	31.60

Tolerances	Dwg No.	7936D02026		Title:			
x. = ±0.50	Projection			7936 Series			
.x = ±0.25	Unit	mm	Scale	D-SUB Double Port			
.xx = ±0.15	Drawn By	Martin	09/29'22	Right Angle Type			
				①512			
				OUPIN ELECTRONIC(KUNSHAN) CO., LTD.		P/N: 7936-xxFFYxA	
				SHEET	1/1	Ver.No.	A3