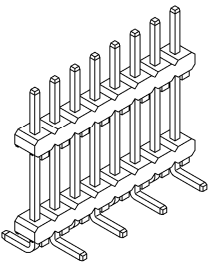


REV.	SPECIFICATION	ECN NO.	APPD.



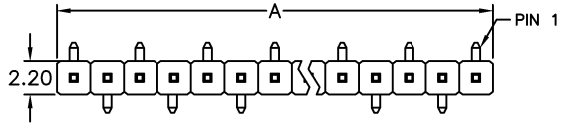
Material:

Housing: PA9T, UL94V-0, Black.
 Contacts: Brass, Gold Plated or 80~120u" Matte Tin Plated over Nickel 30~50u".

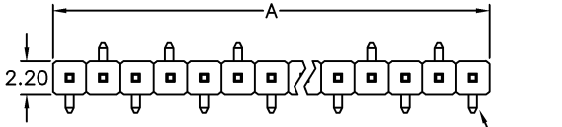
Electrical Characteristics:

Current Rating: 2 AMP.
 Dielectric Withstanding Voltage: AC 500V.
 Insulator Resistance: 1000MΩ min.
 Contact Resistance: 20mΩ max.
 Operating Temperature: -40°C~+105°C.

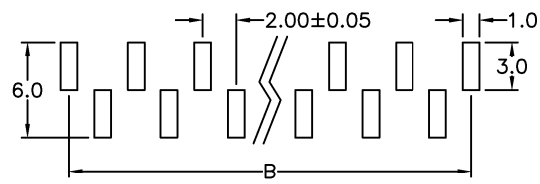
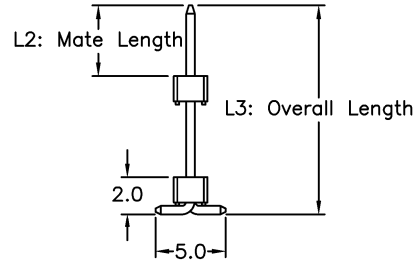
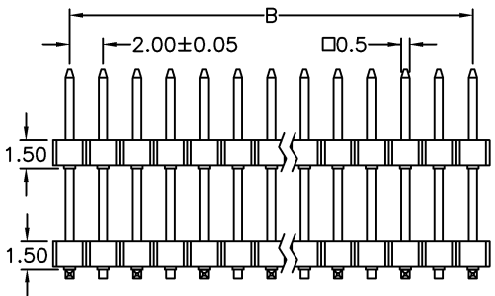
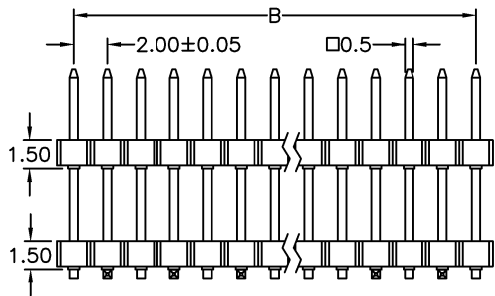
***RoHS Compliant**



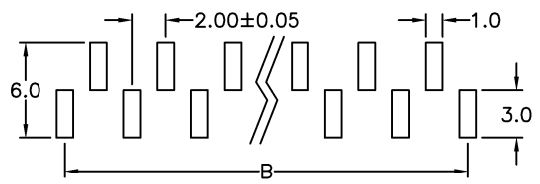
Type A



Type B



P.C. Board Layout Type A



P.C. Board Layout Type B

Series: 2113- 1 X xx G 00 D x -L2-L3 U
 1: Single Row
 No. of Pin Per Row: xx
 G: Gold Plated
 T: Matte Tin Plated
 00: Gold Flash
 Blank: For Matte Tin Plated
 B: Bulk Package
 U: Tube Package
 L2: Mate Length
 L3: Overall Length
 A: Type A Foot Print
 B: Type B Foot Print
 D: SMD Type

ie: 2113-1XxxG00Dx-4-14.3U
 4.0mm Mate Length (increment of 0.1mm)
 14.3mm Overall Length (increment of 0.1mm)

Dimension					
Positions	A	B	Positions	A	B
02	4.00				
03	6.00	4.00	22	44.00	42.00
04	8.00	6.00	23	46.00	44.00
05	10.00	8.00	24	48.00	46.00
06	12.00	10.00	25	50.00	48.00
07	14.00	12.00	26	52.00	50.00
08	16.00	14.00	27	54.00	52.00
09	18.00	16.00	28	56.00	54.00
10	20.00	18.00	29	58.00	56.00
11	22.00	20.00	30	60.00	58.00
12	24.00	22.00	31	62.00	60.00
13	26.00	24.00	32	64.00	62.00
14	28.00	26.00	33	66.00	64.00
15	30.00	28.00	34	68.00	66.00
16	32.00	30.00	35	70.00	68.00
17	34.00	32.00	36	72.00	70.00
18	36.00	34.00	37	74.00	72.00
19	38.00	36.00	38	76.00	74.00
20	40.00	38.00	39	78.00	76.00
21	42.00	40.00	40	80.00	78.00

Tolerances	Dwg No.	2113D01017
x = ±0.5	Projection	
.x = ±0.25	Unit	mm
.xx = ±0.15	Scale	1:1
	Drawn By	Martin 08/12'21

Title: 2113 Series
 PIN Header 2.0mm
 Single Row Double Insulator
 S.M.D Type

DUPIN ELECTRONIC(KUNSHAN) CO., LTD.			
P/N: 2113-1XxxG00Dx-L2-L3U			
SHEET	1/1	Ver.No.	A2