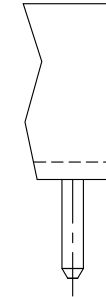
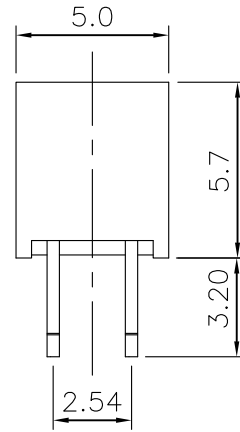
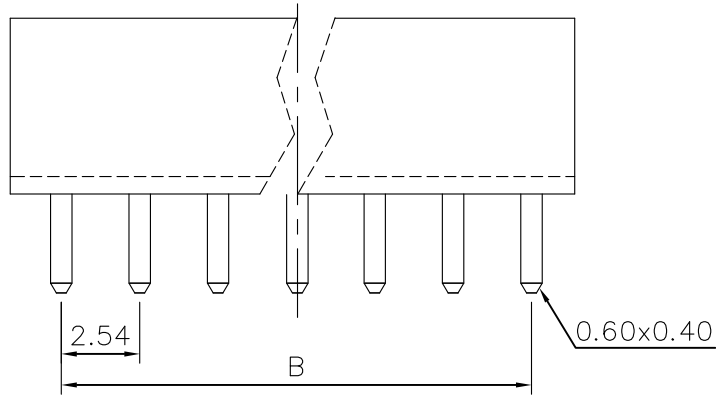
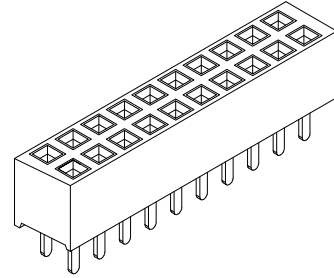
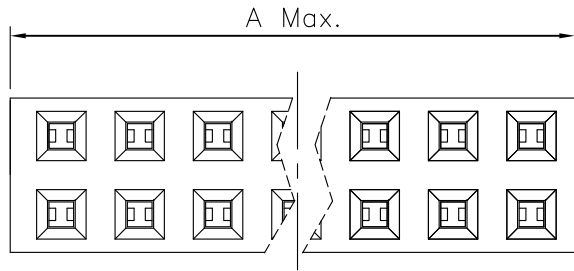
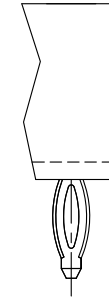


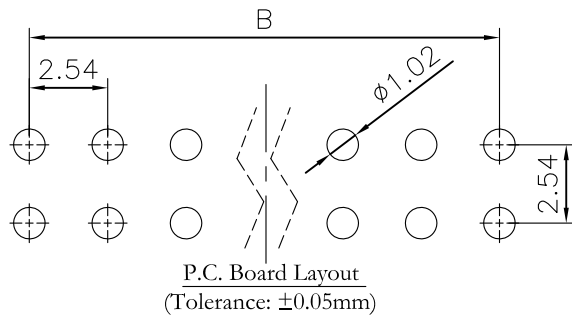
REV.	SPECIFICATION	ECN NO.	APPD.
R3		ECN151236	



Dip Type



Press Fit Type



2042- 2 X xx G xx S x A

Series: 2042-  
Double Row: 2  
No. of Pin Per Row: X xx  
G: Gold Plated  
T: Tin Plated

A: Tray Package  
B: Bulk Package  
Blank: Dip Type  
P: Press Fit Type  
S: Straight  
00: G/F  
10: 10  $\mu\text{m}$   
15: 15  $\mu\text{m}$   
30: 30  $\mu\text{m}$

Position	4 Thru 80
Dimension	
A	2.54 X No. of Position /2
B	2.54 X No. of Position/2 -2.54

Tolerances	Dwg. No.	2042-D0000-003
x = $\pm 0.5$	Projection	$\oplus$ $\triangleleft$
.x = $\pm 0.25$	Unit	mm
.xx = $\pm 0.15$	Scale	1:1
	Drawn By	zbs 02/29'16

Title: 2042 Series  
P.C.B. Socket  
2.54mmX2.54mm(0.100"X0.100")

<b>OUPIN</b>			
OUPIN ELECTRONIC(KUNSHAN) CO., LTD.			
P/N: 2042-2XxxGxxSxA			
SHEET	1/1	Ver.No.	R3