

REV.	SPECIFICATION	ECN NO.	APPD.
R6		ECN230636	

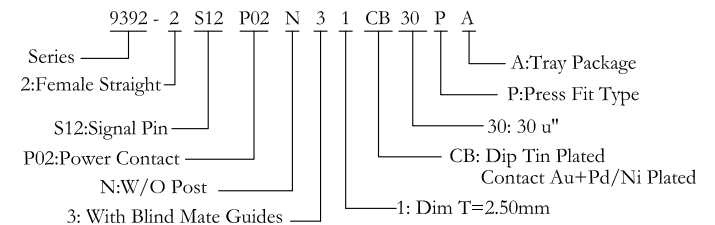
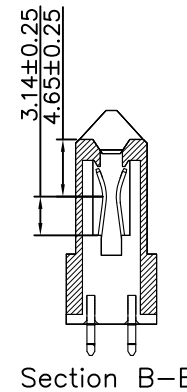
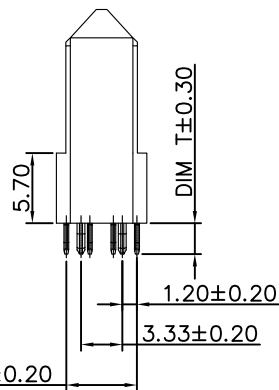
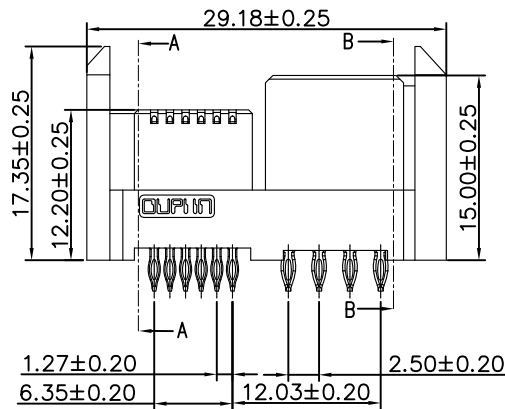
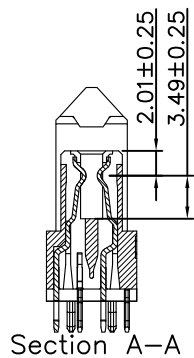
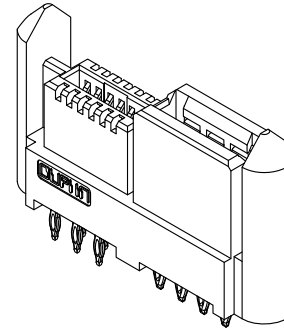
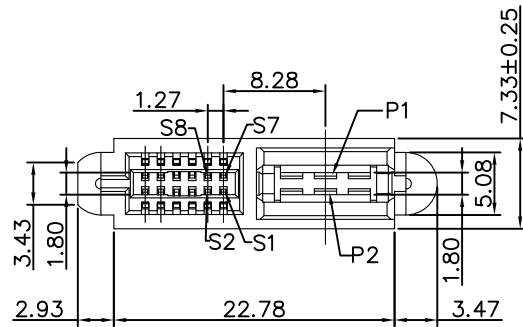
**Material and Plating:**

Housing: LCP, UL94V-0, Black.  
 Power Contacts: High Conductivity Copper.  
 30u"Au+Pd/Ni on Contact Area and 80u" Min Tin  
 Plated on Press Fit over Nickel 50u" Min .  
 Signal Contacts : Phosphor Bronze.  
 30u"Au+Pd/Ni on Contact Area and 80u" Min Tin  
 Plated on Press Fit over nickel 50u" Min .

**Electrical Characteristics:**

Current Rating: Signal Pin 1.0 AMP.  
 Power Pin 30 AMP.  
 Insulator Resistance: Signal:1000MΩ min. at DC 500V.  
 Power:5000MΩ min. at DC 500V.  
 Dielectric Withstanding Voltage:  
 Signal Pin DC 500V For 1 minute.  
 Power Pin DC 1000V For 1 minute.  
 Contact Resistance: Signal Pin 20mΩ max.  
 Power Pin 5.0mΩ max.  
 Operating Temperature: -40°C ~+105°C .

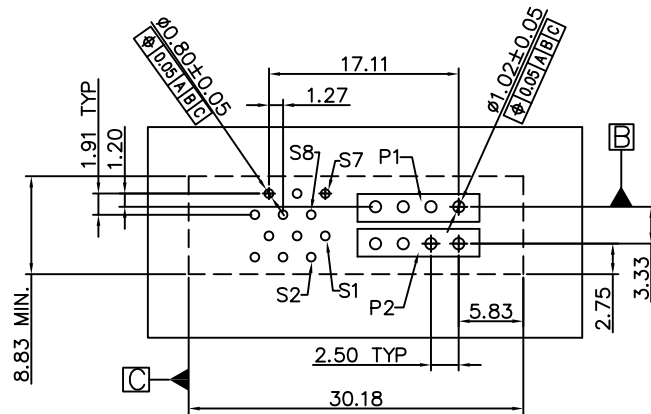
**\*RoHS Compliant**



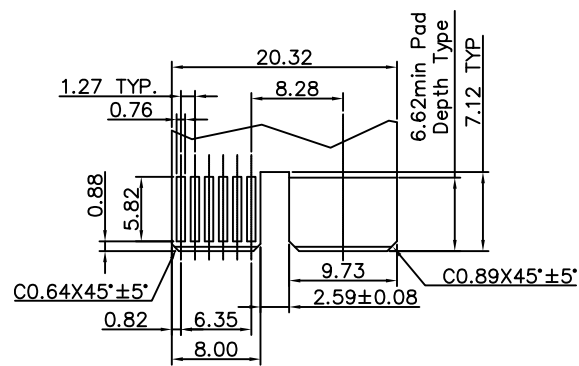
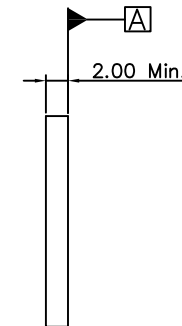
Tolerances	Dwg. No.	9392-D0000-047		Title:	
x = ±0.5	Projection	⊕ ⊖		9392 Series Low Profile Hybrid Power Receptacle	
.x = ±0.25	Unit	mm	Scale		1:1
.xx = ±0.15	Drawn By	JCQ 06/27'23			

<b>OUPIIN</b>			
OUPIIN ELECTRONIC(KUNSHAN) CO., LTD.			
P/N: 9392-2S12P02N31CB30PA			
SHEET	1/2	Ver. No.	R6

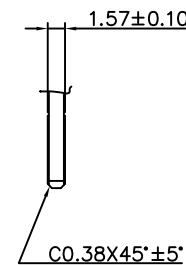
REV.	SPECIFICATION	ECN NO.	APPD.
R6		ECN230636	



P.C.Board Layout  
(Tolerance:±0.05)



Recommended Edge Card Layout  
(Tolerance:±0.05)



Tolerances	Dwg. No.	9392-D0000-047		Title:	
x = ±0.5	Projection			9392 Series	
.x = ±0.25	Unit	mm	Scale	1:1	Low Profile Hybrid
.xx = ±0.15	Drawn By	JCQ 06/27'23			Power Receptacle

Title:			
9392 Series			
Low Profile Hybrid			
Power Receptacle			

<b>OUPIN</b>			
OUPIN ELECTRONIC(KUNSHAN) CO., LTD.			
P/N: 9392-2S12P02N31CB30PA			
SHEET	2/2	Ver. No.	R6