

REV.	SPECIFICATION	ECN NO.	APPD.
R6		ECN231202	

Material and Plating:

Housing: LCP, UL94V-0, Black.
 Cover: LCP, UL94V-0, Black.
 Power Contacts: High Conductivity Copper.
 30u" Au+Pd/Ni on Contact Area and 80u" Min Tin Plated on Press Fit over 50u" Min Nickel.
 Signal Contacts: Phosphor Bronze.
 30u" Au+Pd/Ni on Contact Area and 80u" Min Tin Plated on Press Fit over 50u" Min Nickel.

Electrical Characteristics:

Current Rating: 1 AMP/Signal pin.
 18 AMP/AC Power pin .
 60 AMP/DC Power pin.

Dielectric Withstanding Voltage: DC Power: 1500V For 1 minute.
 AC Power: 2000V For 1 minute.
 Signal Pin : 1000V For 1 minute.

Insulator Resistance: Power:5000MΩ min.
 Signal:500MΩ min.

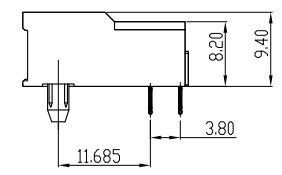
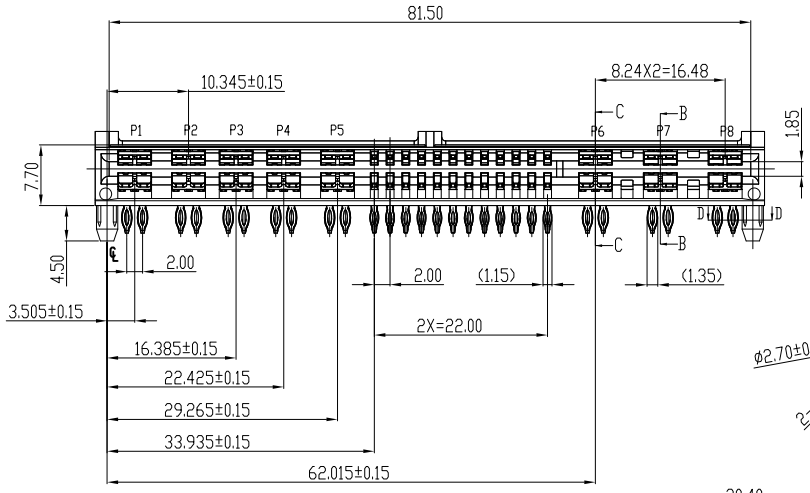
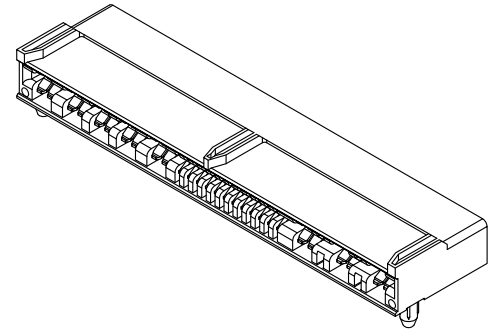
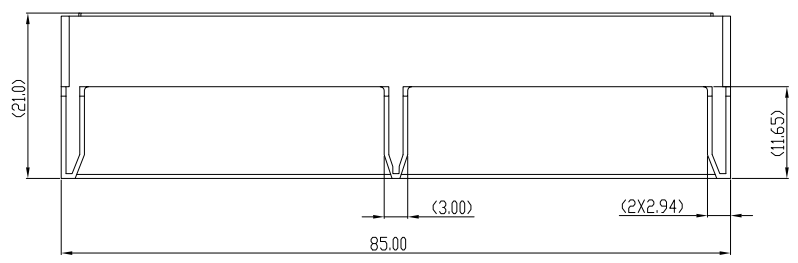
Contact Resistance: DC Power pin : 1mΩ max.
 AC Power pin : 5mΩ max.
 Signal pin : 25mΩ max.

Operating Temperature: -40°C ~+115°C .

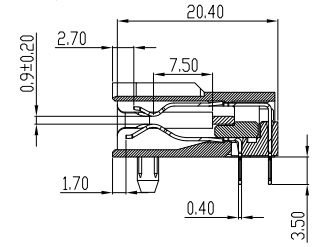
***RoHS Compliant**

ROWS	DC POWER					SIGNAL					AC POWER		
	P1	P2	P3	P4	P5	S1	S2	S3	S4	S5	P6	P7	P8
B	PL	PL	PL	PL	PL	PL	PL	PL	PL	PL	PL	PS	PS
A	PL	PL	PL	PL	PL	PL	PL	PL	PL	PL	PL	PS	PS

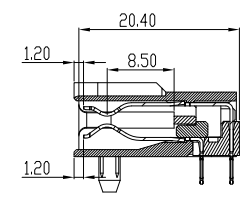
POWER CONTACT TO THE A FACE DISTANCE 7.5mm.	PS
POWER CONTACT TO THE A FACE DISTANCE 8.5mm.	PL
SIGNAL CONTACT TO THE A FACE DISTANCE 8.5mm.	L



Section:D-D
Scale:1:1



Section:B-B
Scale:1:1



Section:C-C
Scale:1:1

9394- 4 A1 P 1 1 A CB 30 P A

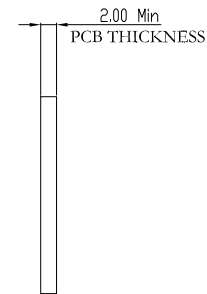
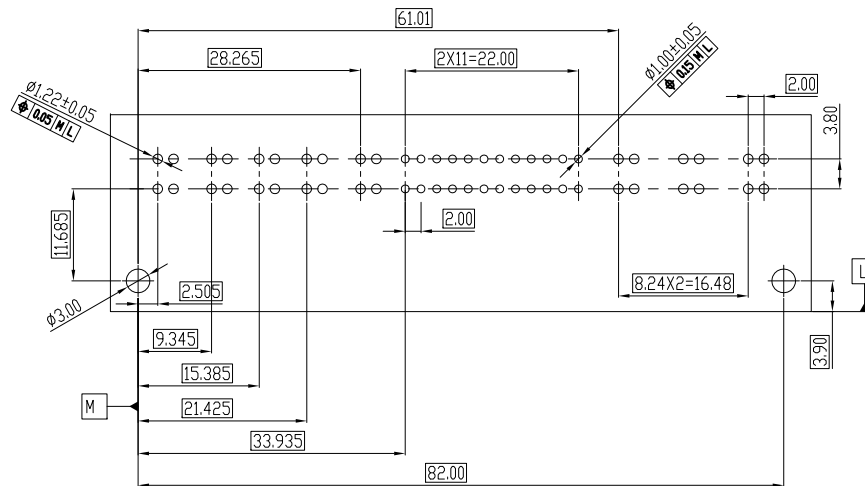
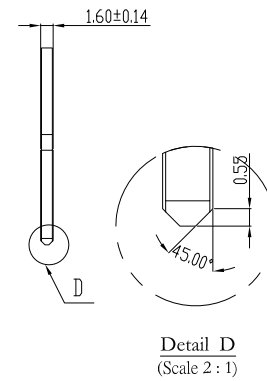
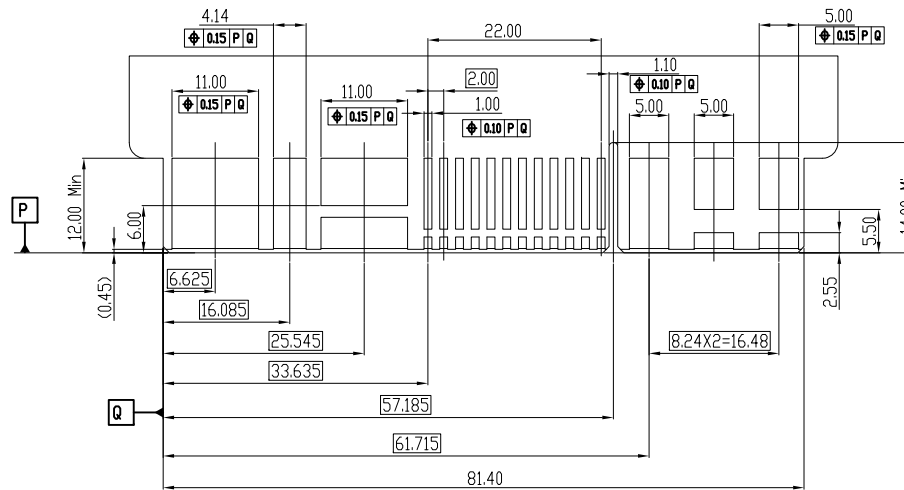
Series — 4:Female -Right Angle
 A1:Type A1
 See Table — P:With Post:4.5mm
 DIM T=3.5mm
 DIM GAP=1.0mm

A:Tray Package
 P: Press Fit Type
 — 30: 30 u"
 CB: Contact Au+Pd/Ni,Dip Tin
 C: Selective Gold Plated
 G: Gold Plated
 A:Signal Pitch 2.0mm
 B:Signal Pitch 2.54mm
 1:W/O Left Key,With Right Key

Tolerances	Dwg. No.	9394-00000-007	Title:	
x.=±0.50	Projection		9394 Series	
.x=±0.25	Unit	mm	HYBRID POWER	
.xx=±0.15	Scale	1:1	CARD EDGE PRESS FIT	
.xxx=±0.10	Drawn By	GYJ 12/05'23	LOW PROFILE	

OUPIN			
OUPIN ELECTRONIC(KUNSHAN) CO., LTD.			
P/N: 9394-4A1P111ACB30PA			
SHEET	1/2	Ver.No.	R6

REV.	SPECIFICATION	ECN NO.	APPD.
R6		ECN231202	



P.C Board Layout
(Tolerance:±0.05)

Tolerances	Dwg. No.	9394-D0000-007	
x.=±0.50	Projection		
.x=±0.25	Unit	mm	Scale
.xx=±0.15	Drawn By	GYJ 12/05'23	1:1
.xxx=±0.10			

Title:
9394 Series
HYBRID POWER
CARD EDGE PRESS FIT
LOW PROFILE

OUPIIN ELECTRONIC(KUNSHAN) CO., LTD.			
P/N: 9394-4A1P111ACB30PA			
SHEET	2/2	Ver.No.	R6