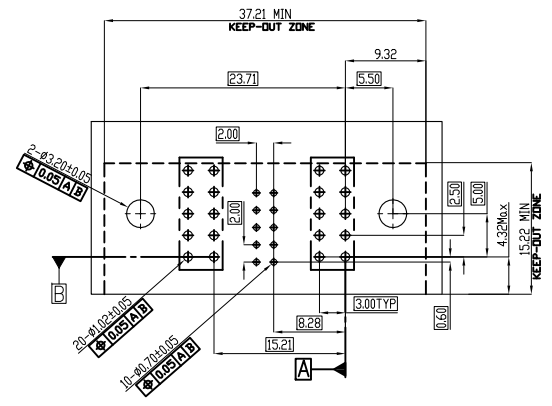
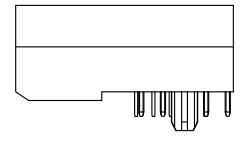
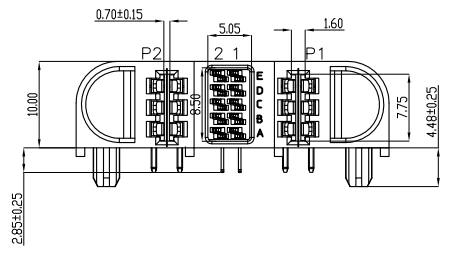
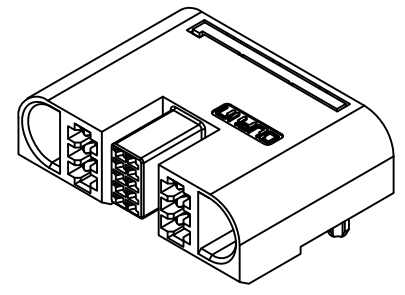
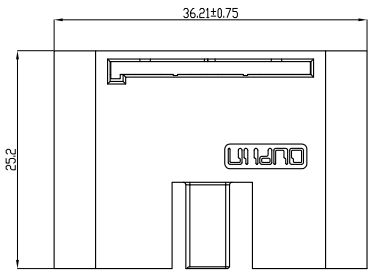
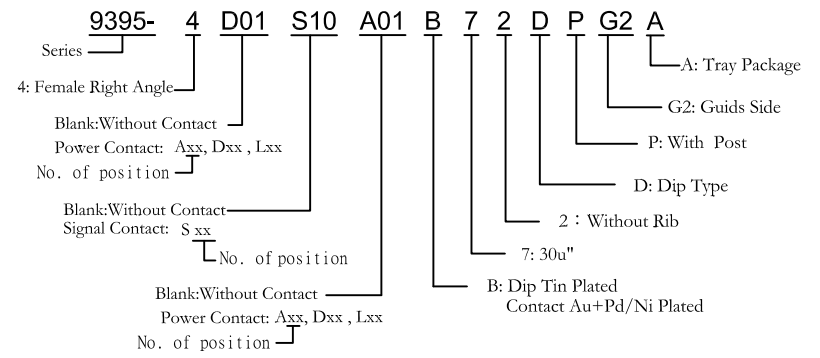
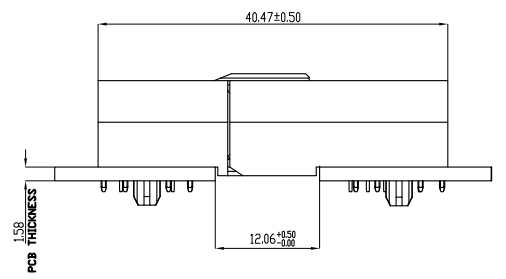


REV.	SPECIFICATION	ECN NO.	APPD.
R4		ECN200401	



P.C.Board Layout
(Tolerance:±0.05)



Material and Plating:

Housing:LCP, UL94V-0, BLACK.
Power Contacts: High Conductivity Copper ,
 30u"Au+Pd/Ni Plated on Contact Area and 80u" Min Tin
 Plated on Solder Tail over Nickel 50u" Min .
Signal Contacts : Phosphor Bronze.

30u"Au+Pd/Ni Plated on Contact Area and 80u" Min Tin
 Plated on Solder Tail over Nickel 50u" Min .

Electrical Characteristics:

Current Rating: Power: 60AMP.
 Signal: 2.5AMP.
Dielectric Withstanding Voltage:
 Power Pin :DC 1500V For 1 minute.
 Signal Pin :DC 500V For 1 minute.
Insulator Resistance: 5000MΩ min.
Contact Resistance: Power: 0.3mΩ max.
 Signal: 30mΩ max.
Operating Temperature: -40°C ~+105°C .

***RoHS Compliant**

Notes :
 L: Low Power---PCB Mount 3.0mm Pitch
 D: DC Power---PCB Mount 5.5mm Pitch
 A: AC Power---PCB Mount 7.5mm Pitch

Tolerances	Dwg. No.	9395-D0000-012	Title: 9395 Series Max P60 10mm Low Profile, 60Amp Receptacle, Right Angle		 OUPIIN ELECTRONIC(KUNSHAN) CO., LTD. P/N:9395-4D01S10A01B72DPG2A			
x = ±0.5	Projection		Scale	1:1				
.x = ±0.25	Unit	mm	Scale	1:1	SHEET	1/1	Ver. No.	R4
.xx = ±0.15	Drawn By	WP 01/10'20						