

REV.	SPECIFICATION	ECN NO.	APPD.
R4		ECN140535	

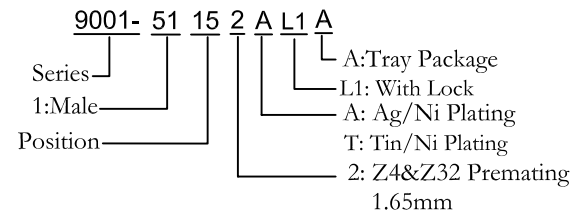
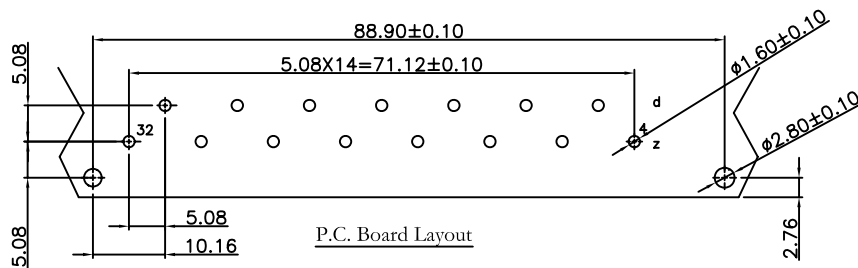
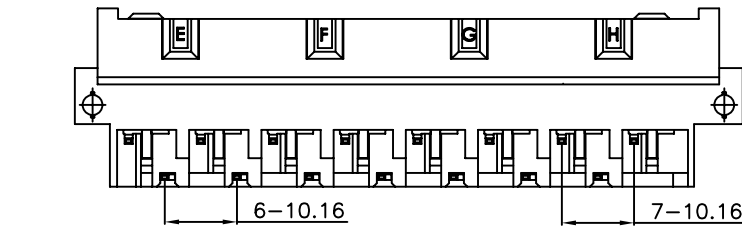
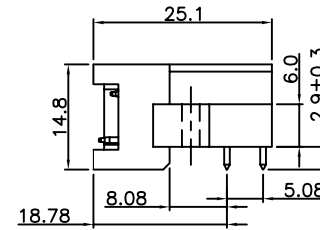
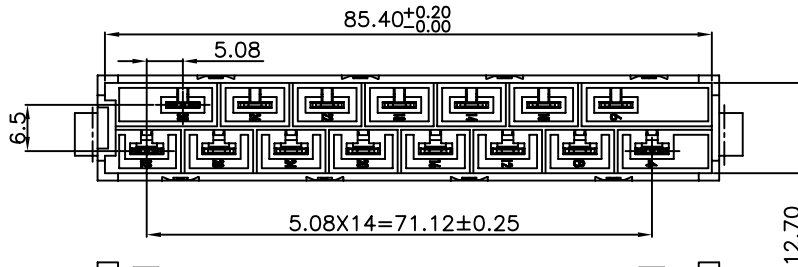
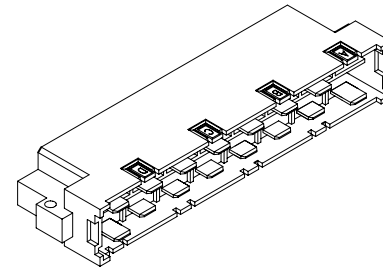
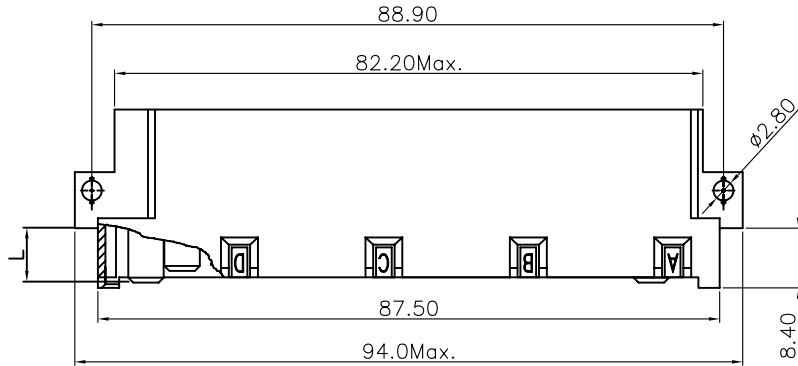
Material:

Housing: Thermoplastic Polyester Glass Filled UL94V-0.
 Contacts: Copper Alloy.
 Lock: Copper Alloy.

Electrical Characteristics:

Current Rating: 15 AMP.
 Dielectric Withstanding Voltage: AC 3100V For 1 minute.
 Insulator Resistance: 1000MΩ min. at DC 500V.
 Contact Resistance: 8mΩ max. at DC 100mA.
 Operating Temperature: -55°C ~+125°C .

***RoHS Compliant**



CONTACT NO.	L
z8,z12,z16,z20,z24,z28	6.00
z4,z32	7.65
d6,d10,d14,d18,d22,d26,d30	6.00

Tolerances	Dwg No.	9001D51011
x = ±0.5	Projection	
.x = ±0.25	Unit	mm
.xx = ±0.15	Scale	1:1
	Drawn By	LX 06/17'14

Title: 9001 Series
 DIN41612 H15
 Type Male

OUPIN			
OUPIN ELECTRONIC(KUNSHAN) CO., LTD.			
P/N: 9001-51152xL1A			
SHEET	1/1	Ver.No.	R4