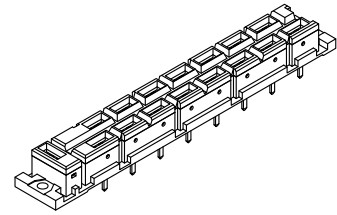
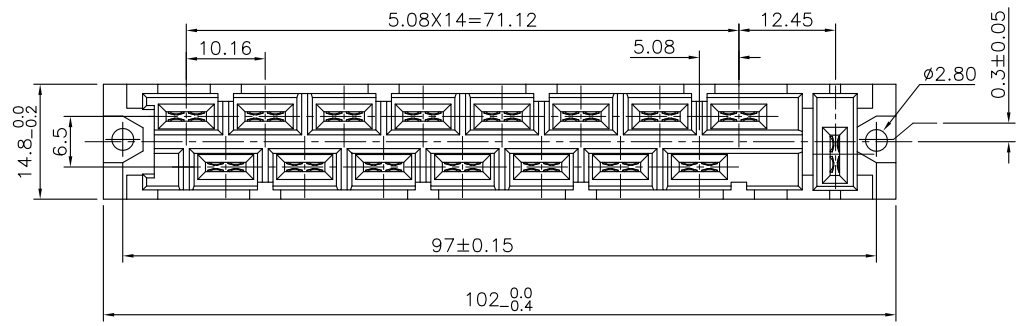


REV.	SPECIFICATION	ECN NO.	APPD.
R2		ECN091106	



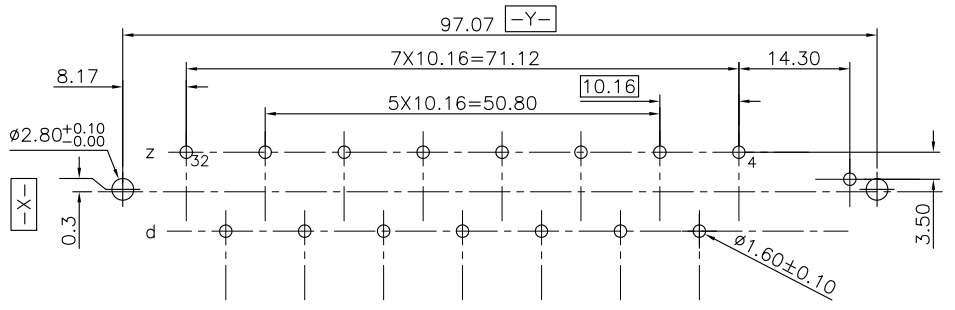
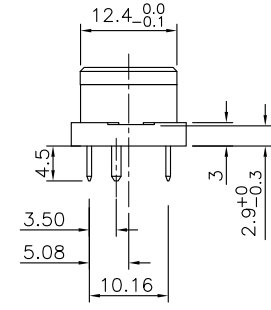
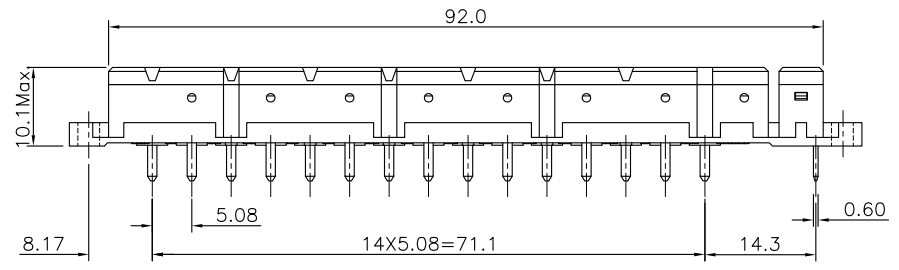
Material:

Housing: Thermoplastic Polyester Glass Filled UL94V-0.
 Contacts: Copper Alloy.

Electrical Characteristics:

Current Rating: 15 AMP.
 Dielectric Withstanding Voltage: AC 3100V For 1 minute.
 Insulator Resistance: 1000MΩ min. at DC 250V.
 Contact Resistance: 8mΩ max. at DC 100mA.
 Operating Temperature: -55°C~+125°C.

***RoHS Compliant**



Recommend P.C. Board Layout
 (Tolerance ±0.05)

9001- 52 16 3 T A
 Series ———
 2: Female ———
 Position ———
 3: Dip Length ———
 A: Tray Package
 A: AG/Ni Plating
 T: TIN/Ni Plating

Tolerances	Drawn No.	9001D52005
x = ±0.50	Projection	
.x = ±0.25	Unit mm	Scale 1:1
.xx = ±0.15	Drawn By	Lilin 11/09'09

Title:
 9001 Series
 DIN41612 H15 Type
 Female Connector

OUPIIN ELECTRONIC(KUNSHAN) CO., LTD.			
P/N: 9001-52163TA			
SHEET	1/1	Ver.No.	R2