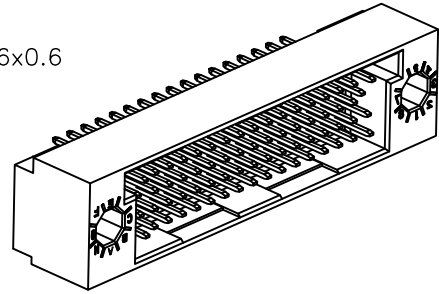
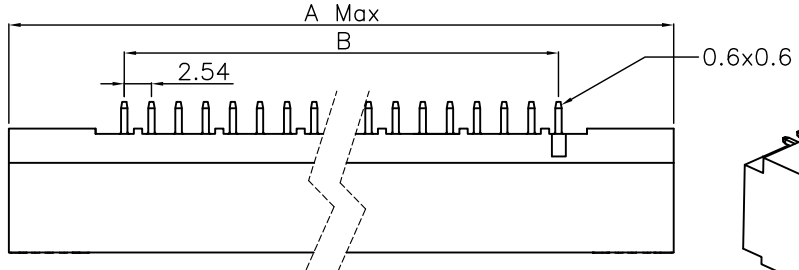


REV.	SPECIFICATION	ECN NO.	APPD.
R6		ECN181102	



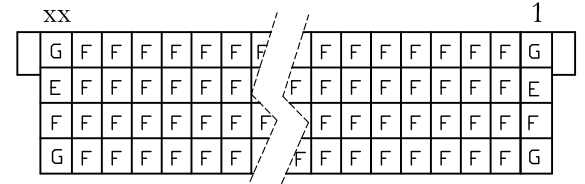
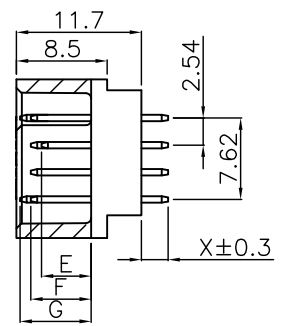
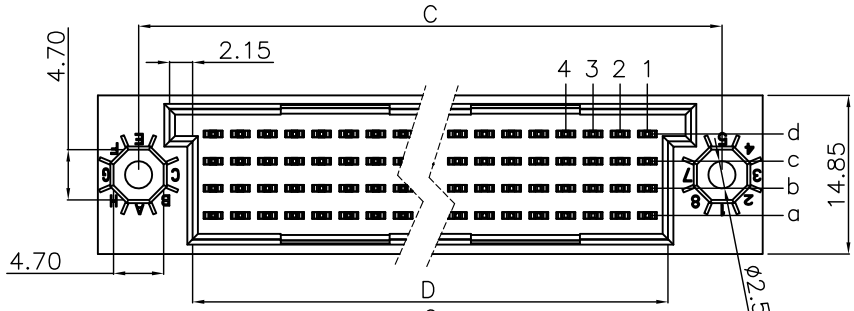
**Material and Plating:**

Housing: LCP,UL94V-0 , BLACK.  
 Contacts: Brass.  
 Gold Plated on Contact Area and 80u" Min Tin or Gold Flash Plated on Solder Tail over Nickel 50u" Min .

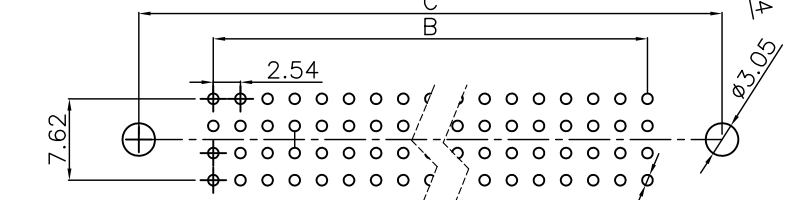
**Electrical Characteristics:**

Current Rating: 2 AMP.  
 Dielectric Withstanding Voltage: AC 1000V For 1 minute.  
 Insulator Resistance: 1000MΩ min. at DC 500V.  
 Contact Resistance: 20mΩ max. at DC 100mA.  
 Operating Temperature: -55°C ~+125°C .

**\*RoHS Compliant**



Columns



P.C. Board Layout  
(Tolerance:±0.05)

Series **9001-** **7** **3** **xx** **1** **C** **xx** **A**  
 7:2.54mm  
 3:Male STR  
 Position  
 1:Dip Length  
 2:Dip Length  
 A:Tray Package  
 00:G/F  
 10:10 μ"  
 15:15 μ"  
 30:30 μ"  
 C:Dip Tin Contact Gold  
 G: Gold Plated

Dip Length	E	F	G	
	4.65	5.65	6.65	
X Length	1	2		
	2.50	4.00		
Position	Dimension			
	A	B	C	D
100	82.55	60.96	74.93	65.02
128	100.33	78.74	92.71	82.80
160	120.65	99.06	113.03	103.12
200	146.05	124.46	138.43	128.52
240	171.45	149.86	163.83	153.92

Tolerances	Dwg. No.	9001D73001	Title:	
x = ±0.5	Projection		9001 Series	
.x = ±0.25	Unit	mm	Scale	1:1
.xx = ±0.15	Drawn By	DYQ 11/01'18	DIN41612 Male	

9001 Series  
 DIN41612  
 Male

**OUPIN**  
**OUPIN ELECTRONIC(KUNSHAN) CO., LTD.**  
 P/N: 9001-73xx1CxxA  
 SHEET 1/1 Ver.No. R6