

REV.	SPECIFICATION	ECN NO.	APPD.
R4		ECN180103	

**Material and Plating:**

Housing: PBT, UL94V-0, Ivory.

Signal Contacts: Brass.

10u" Au on Contact Area and 80u" Min Tin Plated on Solder Tail over Nickel 50u" Min.

**Electrical Characteristics:**

Current Rating: 1 AMP.

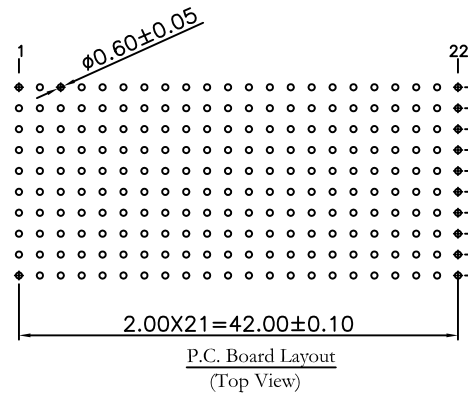
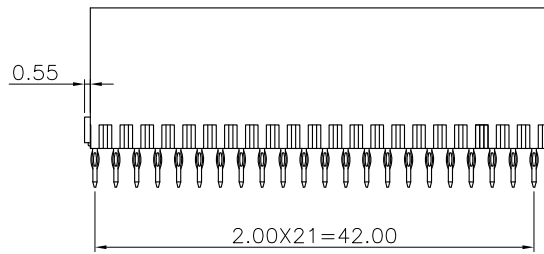
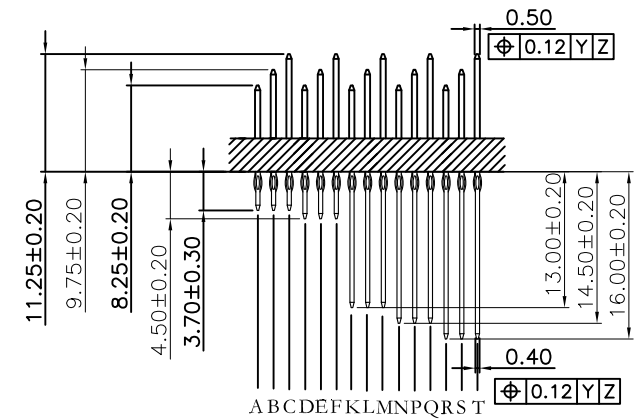
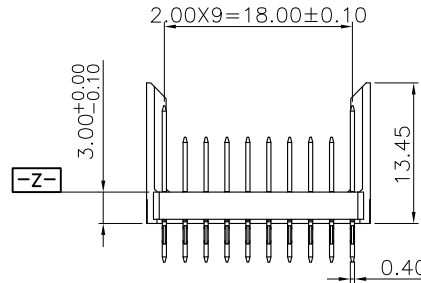
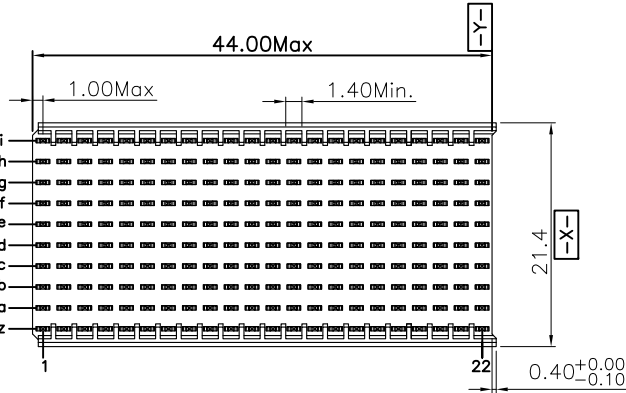
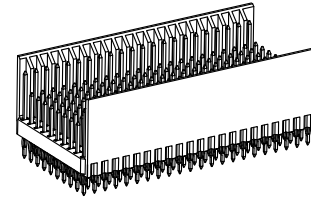
Dielectric Withstanding Voltage: AC 750V For 1 minute.

Insulator Resistance: 10000MΩ min. at DC 500V.

Contact Resistance: 20mΩ max. at DC 100mA.

Operating Temperature: -55°C~+125°C.

**\*RoHS Compliant**



9111- 10 1 E 220 x x C xx U  
 Series 10Row 1: Male E: Type E Housing Type Signal Pin(a~h Row) A: A Contact B: B Contact  
 x x C xx U U: Tube Package 10: 10 u" 30: 30 u" C: Dip Tin Contact Gold G: Gold Shield Pin(i,z Row) C:C Contact Blank:Without Shield Pin

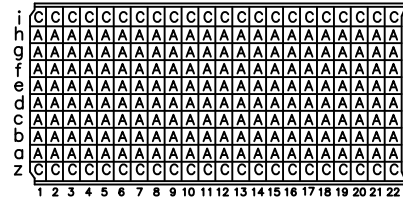
Tolerances	Dwg No.	9111D10102		Title:	9111 Series	
x = ±0.50	Projection	⊕ ↗		Hard Metric Connector		 <b>OUPIIN ELECTRONIC(KUNSHAN) CO., LTD.</b> P/N: 9111-101E220xxCxxU SHEET 1/2 Ver.No. R4
.x = ±0.25	Unit	mm	Scale	1:1		
.xx = ±0.15	Drawn By	MXM	01/02'18	Male Type E		

9111 Series  
 Hard Metric Connector  
 Male Type E

 <b>OUPIIN ELECTRONIC(KUNSHAN) CO., LTD.</b>			
P/N: 9111-101E220xxCxxU			
SHEET	1/2	Ver.No.	R4

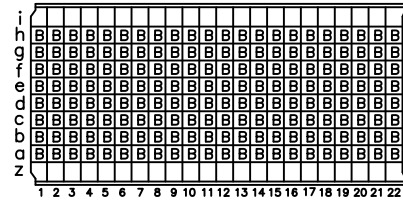
REV.	SPECIFICATION	ECN NO.	APPD.
R4		ECN180103	

CONTACT LAYOUT


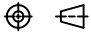


9111-101E220ACCxxU

CONTACT LAYOUT



9111-101E220BCxxU

Tolerances x = ±0.50 .x = ±0.25 .xx = ±0.15	Dwg No.	9111D10102		Title: 9111 Series Hard Metric Connector Male Type E	 <b>OUPIIN ELECTRONIC(KUNSHAN) CO., LTD.</b> P/N: 9111-101E220xxCxxU			
	Projection							
	Unit	mm	Scale		1:1			
Drawn By	MXM 01/02'18							