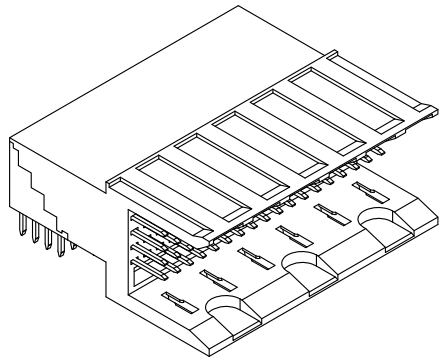
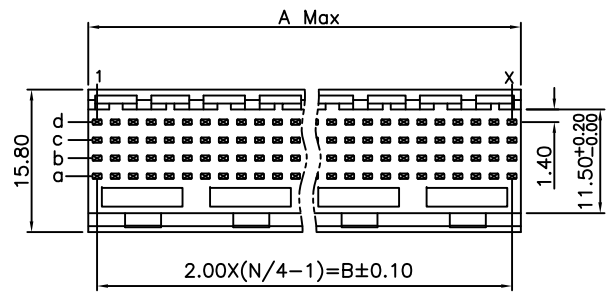
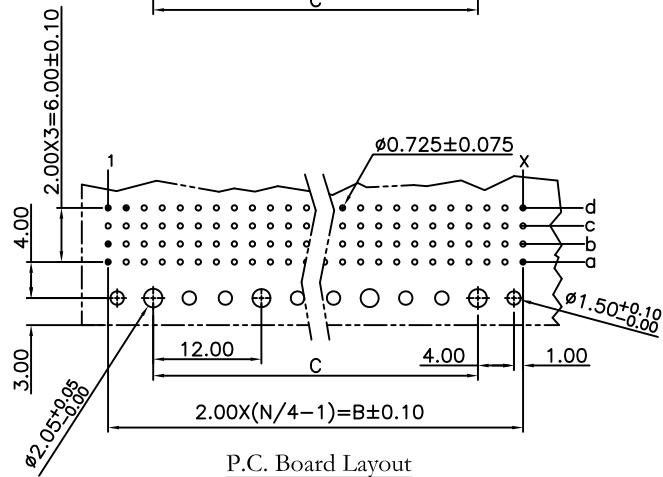
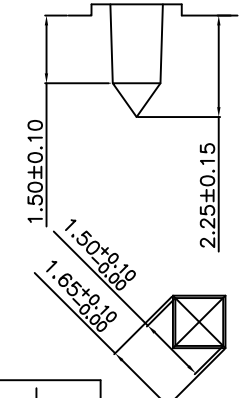
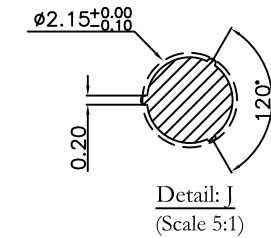
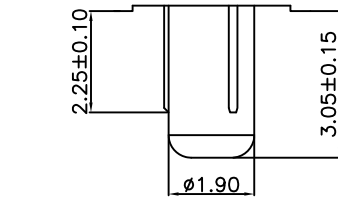
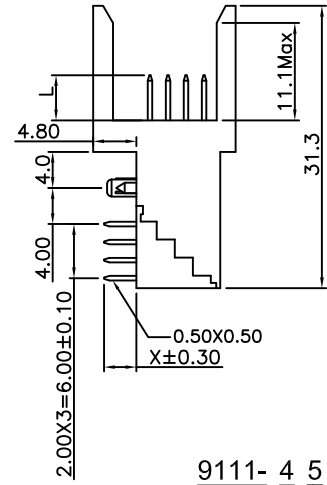
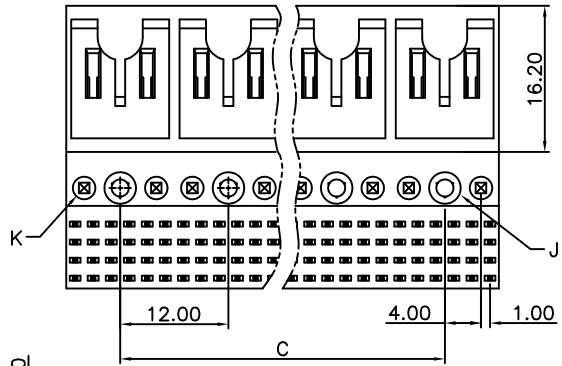


REV.	SPECIFICATION	ECN NO.	APPD.
R5		ECN151146	



Material:
Housing: High Temperature Plastic UL94V-0.
Contacts: Copper Alloy.
Electrical Characteristics:
Current Rating: 1 AMP.
Dielectric Withstanding Voltage: AC 1000V For 1 minute.
Insulator Resistance: 1000MΩ min. at DC 500V.
Contact Resistance: 30mΩ max. at DC 100mA.
Operating Temperature: -55°C ~ +125°C .
***RoHS Compliant**



P.C. Board Layout
(Tolerance: ±0.05)

9111- 4 5 xx A 1 C xx D U
 Series
 4: 4Rows
 5: Male Signal
 Position
 A: A~H Contact Length
 1: Dip Length
 2: Dip Length
 U: Tube Package
 D: Dip Type
 10: 10 μ"
 30: 30 μ"
 C: Selective Gold Plated
 G: Gold Plated
 CM: Dip Tin (Matte Tin)
 Contact Gold

TYPE NO.	L
A	5.00
B	5.75
E	6.50
F	7.25
H	8.00

Detail: K
(Scale 5:1)

DIP LENGTH(X)	L		
	1	2	3.53
Part NO.	A	B	C
9111-4524xxCxxDU	11.95	10.0	0.0
9111-4548xxCxxDU	23.95	22.0	12.0
9111-4572xxCxxDU	35.95	34.0	24.0
9111-4596xxCxxDU	47.95	46.0	36.0
9111-45120xxCxxDU	59.95	58.0	48.0
9111-45144xxCxxDU	71.95	70.0	60.0
9111-45168xxCxxDU	83.95	82.0	72.0
9111-45192xxCxxDU	95.95	94.0	84.0

Tolerances	Dwg.No.	9111D45002	
x = ±0.5	Projection		
.x = ±0.25	Unit mm	Scale	1:1
.xx = ±0.15	Drawn By	YY 11/24*15	

Title:
 9111 Series
 H.D 2.0mm
 Futurebus(+)4 Rows Male
 Right Angle Dip Type

OUPIN			
OUPIN ELECTRONIC(KUNSHAN) CO., LTD.			
P/N: 9111-45xxxxCxxDU			
SHEET	1/1	Ver.No.	R5