

REV.	SPECIFICATION	ECN NO.	APPD.
R9		ECN190847	

**Material and Plating:**

Housing: High Temperature Plastic UL94V-0.

Contacts: Copper Alloy.

10u" gold plated on Contact Area and 80~160u"

Tin Plated on Solder Tail over nickel 50~120u" under plated.

**Electrical Characteristics:**

Current Rating: 1 AMP.

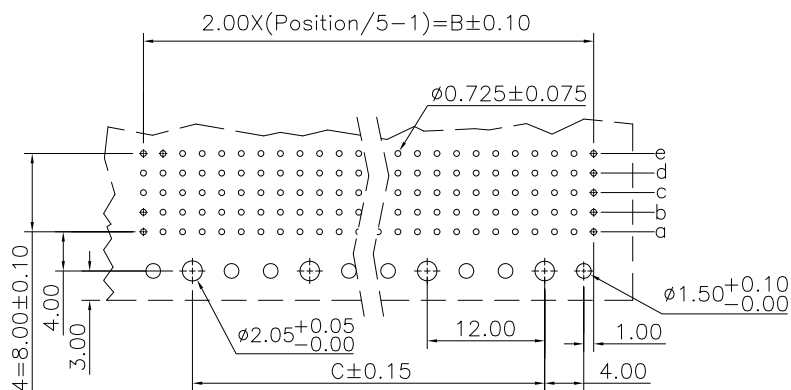
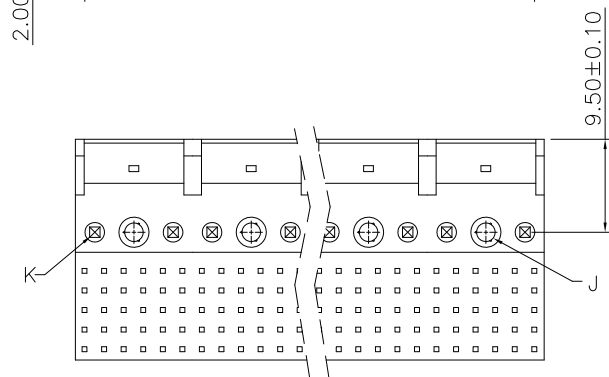
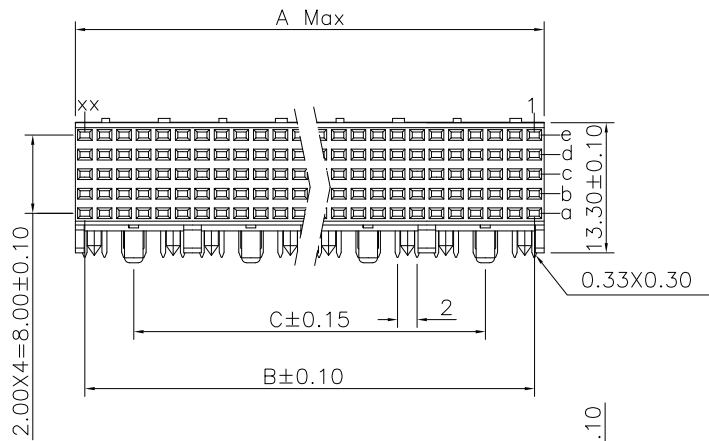
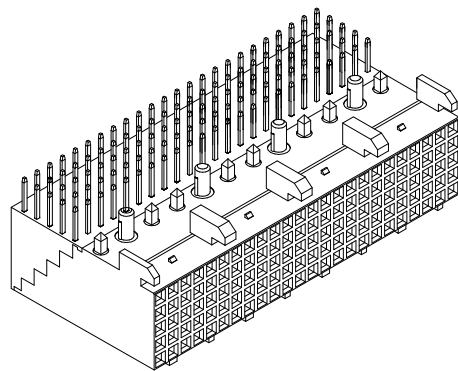
Dielectric Withstanding Voltage: AC 1000V For 1 minute.

Insulator Resistance: 1000MΩ min. at DC 500V.

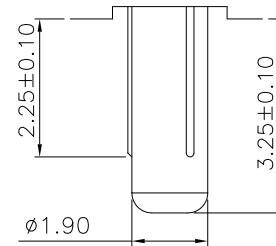
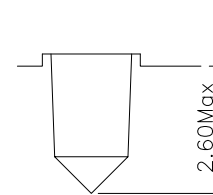
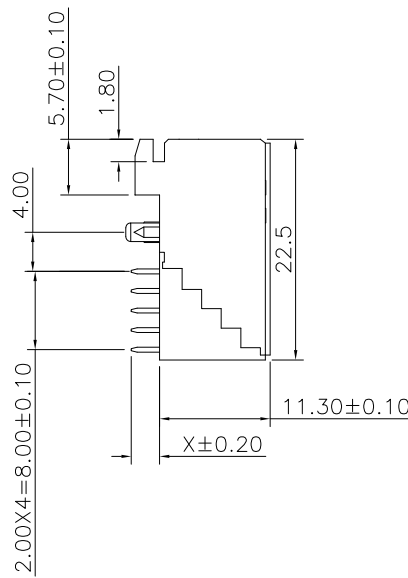
Contact Resistance: 30mΩ max. at DC 100mA.

Operating Temperature: -55°C~+125°C.

**\*RoHS Compliant**



**P.C. Board Layout**  
(Tolerance: ±0.05)



**Detail K**  
(Scale 5 : 1)

**Detail J**  
(Scale 5 : 1)

**9111-52 xx x C xx D U**

- Series: 5: 5Rows
- 2: Female Signal
- Position: 1: Dip Length, 2: Dip Length
- U: Tube Package
- D: Dip Type
- 10: 10 μ", 30: 30 μ"
- C: Dip Tin Plated
- Contact Gold Plated
- G: Gold Plated

Position	X Length	1	2
		2.90	3.53
Dimension			
	A	B	C
30	11.95	10	0
60	23.95	22	12
90	35.95	34	24
120	47.95	46	36
150	59.95	58	48
180	71.95	70	60
210	83.95	82	72
240	95.95	94	84
270	107.95	106	96
300	119.95	118	108
330	131.95	130	120
360	143.95	142	132
390	155.95	154	144

Tolerances	Dwg. No.	9111D52001	
x = ±0.5	Projection	⊕ ◁	
.x = ±0.25	Unit	mm	Scale 1:1
.xx = ±0.15	Drawn By	Wq 08/27'19	

Title: 9111 Series  
H.D.2.00mm(0.079") Futurebus(+J5) Rows  
Female Right Angle Type

<b>OUPIN</b>			
OUPIN ELECTRONIC(KUNSHAN) CO., LTD.			
P/N: 9111-52xxx CxxDU			
SHEET	1/1	Ver.No.	R9