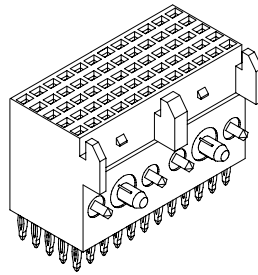
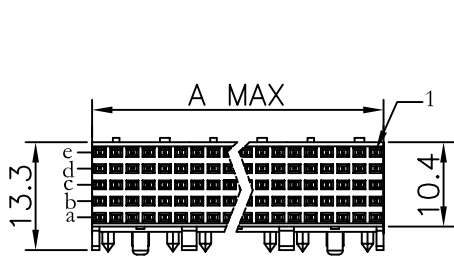


REV.	SPECIFICATION	ECN NO.	APPD.
R3		ECN130433	



Material:

Housing: High Temperature Plastic UL94V-0

Contacts: Copper Alloy

Electrical Characteristics:

Current Rating: 1 AMP.

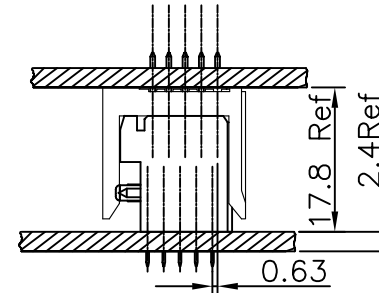
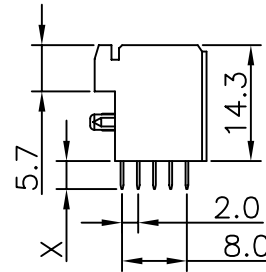
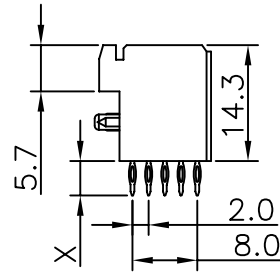
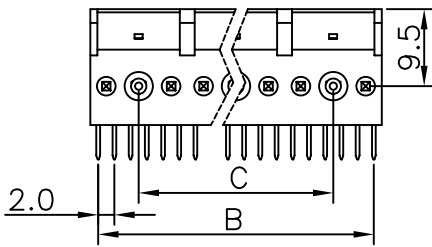
Dielectric Withstanding Voltage: AC 1000V For 1 minute.

Insulator Resistance: 1000MΩ min. at DC 500V.

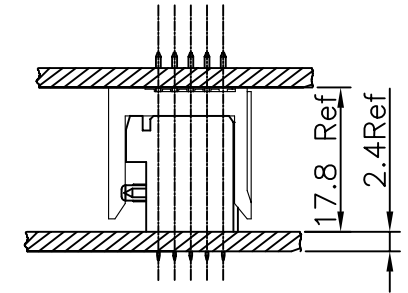
Contact Resistance: 30mΩ max. at DC 100mA.

Operating Temperature: -55°C ~+125°C .

***RoHS Compliant**

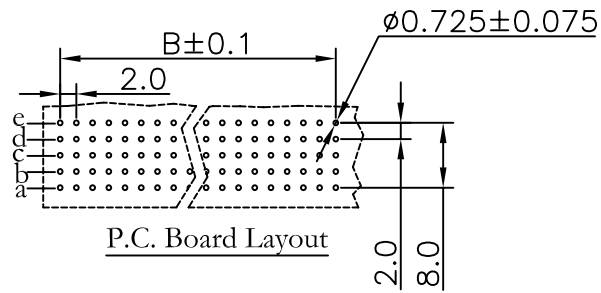


Dip Type



Press Fit Type

Board-to-Board Offset
Application Example



P.C. Board Layout

Series 9111- 5 6 xx x C xx x U

5Rows
6: Female
Straight
Position
1: Dip Length
2: Dip Length
3: Dip Length

U: Tube Package
D: Dip Type
P: Press Fit Type
10: 10 u"
30: 30 u"
C: Dip Tin
Contact Gold

Position	Dimension		
	A	B	C
30	11.95	10.0	0
60	23.95	22.0	12.0
90	35.95	34.0	24.0
120	47.95	46.0	36.0
150	59.95	58.0	48.0
180	71.95	70.0	60.0
210	83.95	82.0	72.0
240	95.95	94.0	84.0
X Length	1	2	3
	3.45	4.25	3.0

Tolerances	Dwg. No.	9111D56007	Title:
x = ±0.50	Projection		9111 Series
.x = ±0.25	Unit	mm	H.D. Female 2.0mm
.xx = ±0.15	Scale	1:1	Straight Type
	Drawn By	Xi MM04/26'13	

OUPIN			
OUPIN ELECTRONIC(KUNSHAN) CO., LTD.			
P/N: 9111-56xxxCxxD(P)U			
SHEET	1/1	Ver.No.	R3