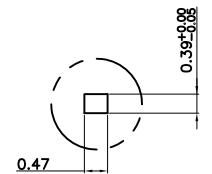
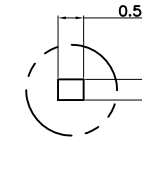
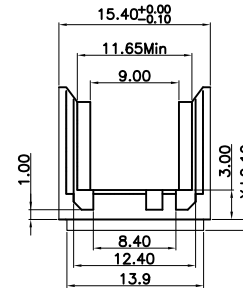
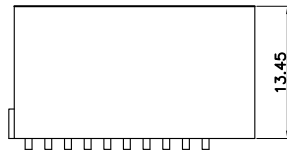
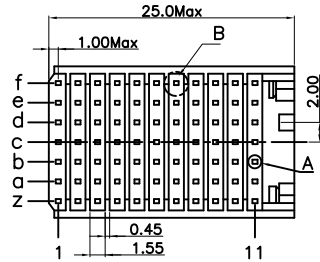
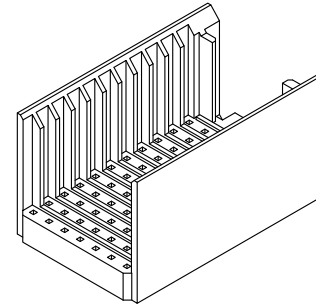


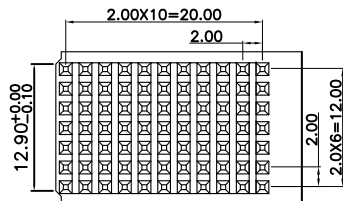
REV.	SPECIFICATION	ECN NO.	APPD.
R2			

Material:
Housing: Thermoplastic Polyester Glass Filled UL94V-0.
Electrical Characteristics:
Operating Temperature: -55°C ~+125°C .
***RoHS Compliant**



Detail A

Detail B



9111- 7 1 C 11 xx B
 Series | 7: 7Row | 1: Male | C: Type C | 11: 11 line | xx: Length | B: Bulk Package | U: Tube Package

X	Length
00	0.00
01	0.90
02	1.10
03	1.30
04	1.50
05	1.70
06	1.90
07	2.20
08	3.00

Tolerances	Drawn No.	9111D71163
x = ±0.5	Projection	
.x = ±0.25	Unit	mm
.xx = ±0.15	Scale	1:1
	Drawn By	Kunlun 09/26'09

Title: 9111 Series
2.00 Hard Metric
Connectors Shrouds
Type C Housing

OUPIN ELECTRONIC(KUNSHAN) CO., LTD.			
P/N: 9111-71C11xxB			
SHEET	1/1	Ver.No.	R2