

REV.	SPECIFICATION	ECN NO.	APPD.
R2		ECN201023	

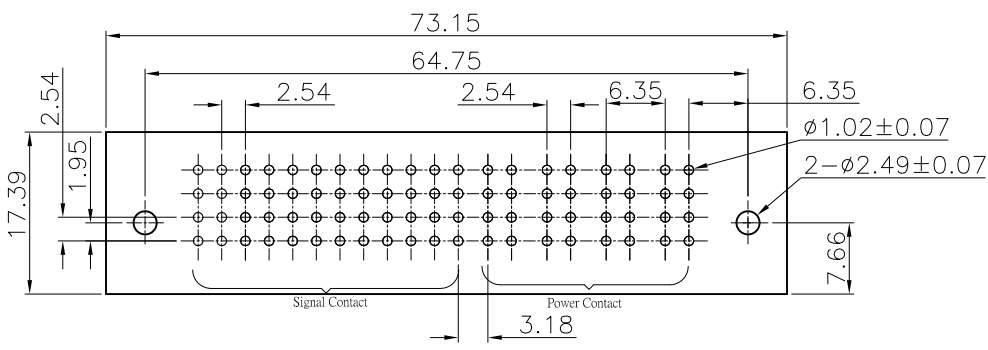
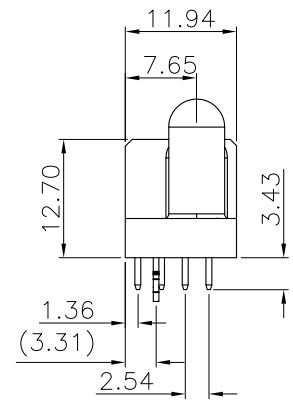
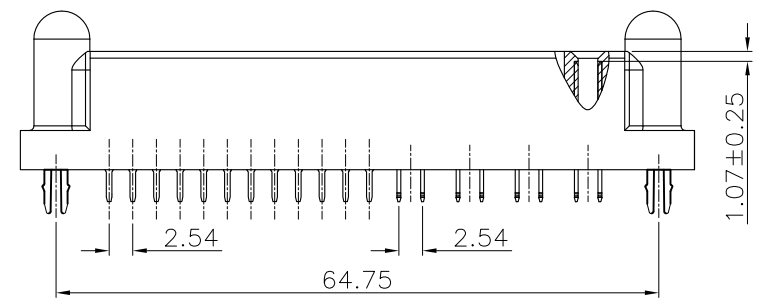
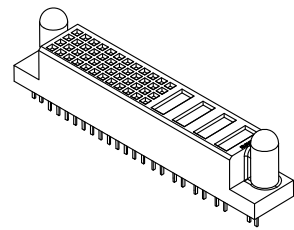
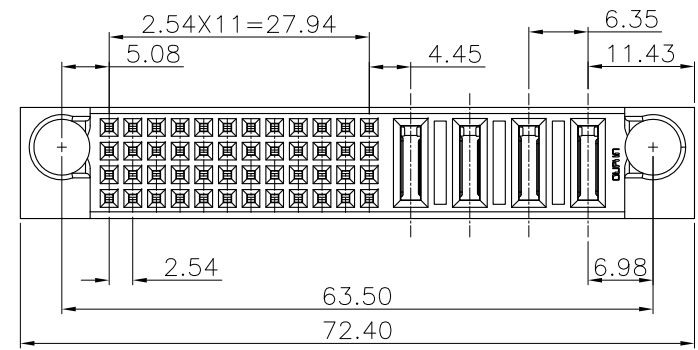
Material and Plating:
Housing: LCP, UL94V-0, Black.
Power Contacts: High Conductivity Copper.
 30u"Au+Pd/Ni on Contact Area and 80u" Min Tin Plated on Solder Tail over 50u" Min Nickel.
Signal Contacts : Phosphor Bronze.
 30u"Au+Pd/Ni on Contact Area and 80u" Min Tin Plated on Solder Tail over 50u" Min Nickel.
Lock: Phosphor Bronze.

Electrical Characteristics:
Current Rating: Signal Pin 2.5 AMP.
 Power Pin 30 AMP.
Dielectric Withstanding Voltage:
 Signal Pin DC 1000V For 1 minute.
 Power Pin DC 2500V For 1 minute.
Insulator Resistance: Signal Pin 5000MΩ min. at DC 500V.
 Power Pin 20000MΩ min. at DC 500V.
Contact Resistance: Signal Pin 15mΩ max. at DC 20mA.
 Power Pin 0.7mΩ max. at DC 20mA.
Operating Temperature: -40°C ~+105°C .

***RoHS Compliant**
Notes 1:
 H: High density Power---PCB Mount 5.08mm Pitch
 P: DC Power---PCB Mount 6.35mm Pitch
 A: AC Power---PCB Mount 7.62mm Pitch
 S: Signal---PCB Mount 2.54mm Pitch

ROWS	SIGNAL												POWER					
	12	11	10	9	8	7	6	5	4	3	2	1	P4	P3	P2	P1		
D	L	L	L	L	L	L	L	L	L	L	L	L	L	L	FS	FS	FS	FS
C	L	L	L	L	L	L	L	L	L	L	L	L	L	L	FS	FS	FS	FS
B	L	L	L	L	L	L	L	L	L	L	L	L	L	L	FS	FS	FS	FS
A	L	L	L	L	L	L	L	L	L	L	L	L	L	L	FS	FS	FS	FS

POWER CONTACT TO THE TOP DISTANCE 2.34mm, THE MATING LENGTH 3.87mm	FM
POWER CONTACT TO THE TOP DISTANCE 1.07mm, THE MATING LENGTH 5.14mm	FS
SIGNAL CONTACT 3.43 SOLDER TAIL, PD/Ni	L



P.C.Board Layout
(Tolerance:±0.05)

Series 9391-A 2 S48 P04 CB 30 D L A
 2: Female Straight
 Blank: Without Contact
 Signal Contact: S xx
 No. of position
 Blank: Without Contact
 Power Contact: Hxxx, Pxx, Asx
 No. of position
 A: Tray Package
 L: With Lock
 D: Dip Type
 30: 30u"
 CB: Dip Tin Plated Contact Au+Pd/Ni Plated

Tolerances	Dwg. No.	9391-D0000-271	Title:		 OUPIIN ELECTRONIC(KUNSHAN) CO., LTD. P/N: 9391-A2S48P04CB30DLA			
x = ±0.5	Projection		9391 Series Female Straight Dip Type					
.x = ±0.25	Unit	mm	Scale	1:1	SHEET	1/1	Ver. No.	R2
.xx = ±0.15	Drawn By	SH 12/10'20						