

| | | | |
|------|---------------|---------|-------|
| REV. | SPECIFICATION | ECN NO. | APPD. |
| X10 | | | |

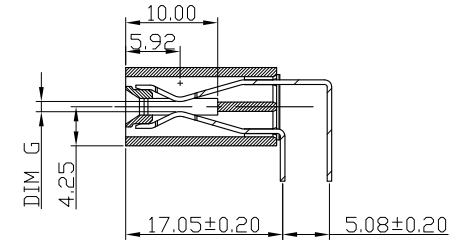
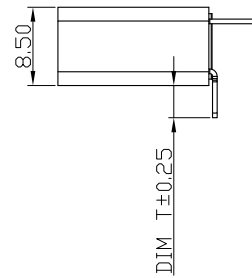
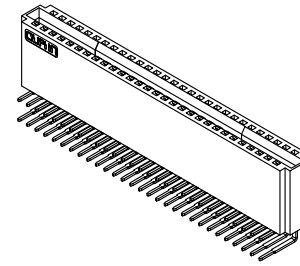
Material and Plating:

Housing:LCP, 30% Glass Filled,UL94V-0 , BLACK.
 Power Contacts:High Conductivity Copper .
 30u"Au+Pd/Ni on Contact Area and 80u" Min Tin Plated on Solder Tail over nickel 50u" Min under plated .

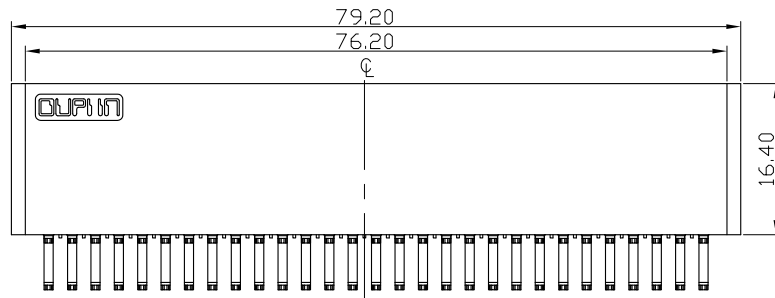
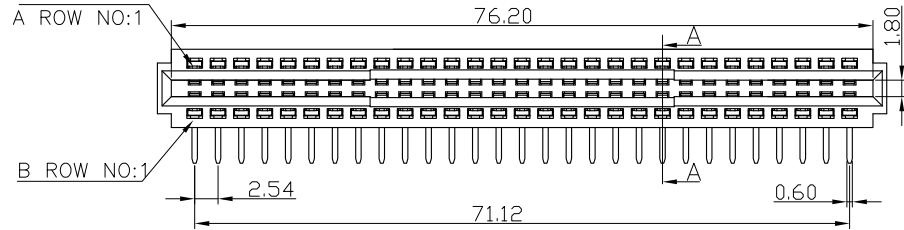
Electrical Characteristics:

Current Rating: 12.5 A(UL).
 Dielectric Withstanding Voltage:DC 1000V For 1 minute.
 Insulator Resistance: 5000MΩ min. at DC 500V.
 Contact Resistance: 2.5mΩ max. at DC 100mA.
 Operating Temperature: -5°C ~+105°C .

***RoHS Compliant**



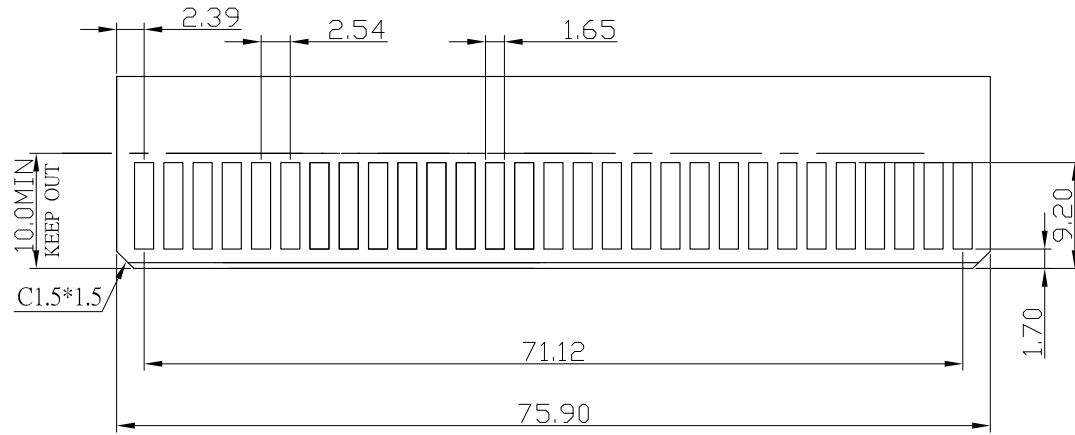
SECTION A-A



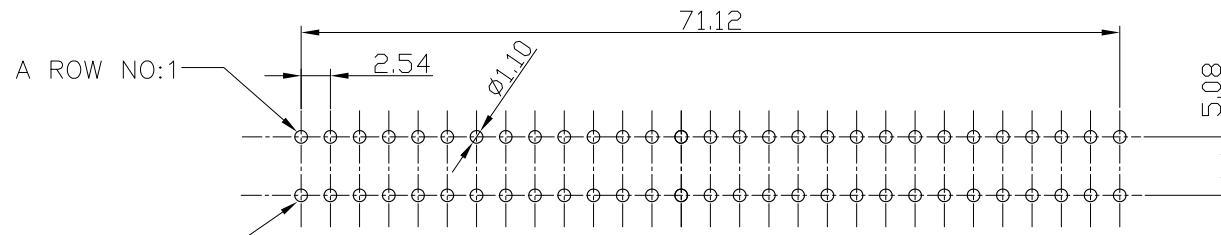
- 9393-F 4 P58 N 1 1 A CB30 D A
- Series
- 4:Female Right Angle
- Position
- N:W/O Post
- 1:DIM T=3.5mm
- 2:DIM T=2.6mm
- 1:DIM G(GAP)=1.2mm
- A: Tray Package
- D:Dip Type
- P:Press-Fit Type
- CB30:Contact Au+Pd/Ni,Dip Tin 30u"
- A:Power pitch 2.54
- B:Power pitch 5.08

| | | | | | | | | |
|-------------|------------|----------------|---------------|-----|---|-----|----------|-----|
| Tolerances | Dwg. No. | 9393-D0000-013 | Title: | | OUPIIN OUPIIN ELECTRONIC(KUNSHAN) CO., LTD. | | | |
| x = ±0.5 | Projection | | 9393-F Series | | | | | |
| .x = ±0.25 | Unit | mm | Scale | 1:1 | P/N: 9393-F4P58N11ACB30DA | | | |
| .xx = ±0.15 | Drawn By | LQ12/26'16 | | | SHEET | 1/2 | Ver. No. | X10 |

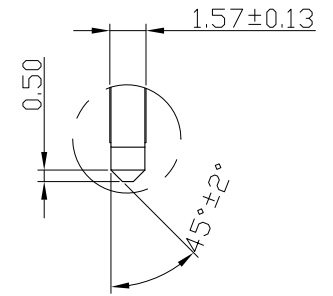
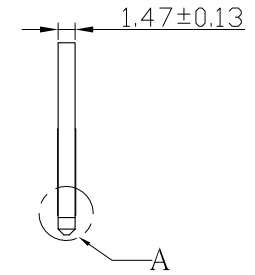
| | | | |
|------|---------------|---------|-------|
| REV. | SPECIFICATION | ECN NO. | APPD. |
| X10 | | | |



RECOMMENDED MATTING BOARD FOOTPRINT
(Tolerance:±0.05)



P.C. Board Layout
(Tolerance:±0.05) (Top View)



DETAIL:A
SCALE :2:1

| | | | | | | |
|-------------|------------|----------------|-------|---------------------------------------|--|-----|
| Tolerances | Dwg. No. | 9393-D0000-013 | | Title: | | |
| x = ±0.5 | Projection | | | 9393-F Series Power Edge Connector | | |
| .x = ±0.25 | Unit | mm | Scale | | | 1:1 |
| .xx = ±0.15 | Drawn By | LQ12/26'16 | | | | |

| | | | |
|-------------------------------------|-----|----------|-----|
| OUPIN | | | |
| OUPIN ELECTRONIC(KUNSHAN) CO., LTD. | | | |
| P/N: 9393-F4P58N11ACB30DA | | | |
| SHEET | 2/2 | Ver. No. | X10 |