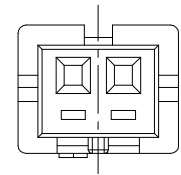
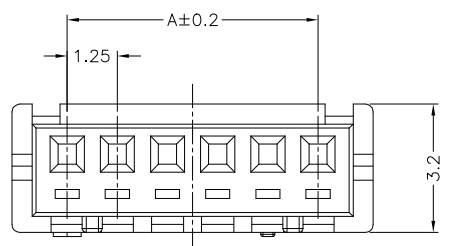
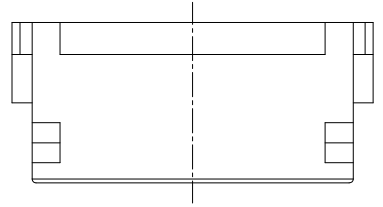
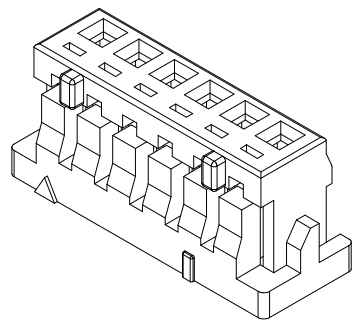
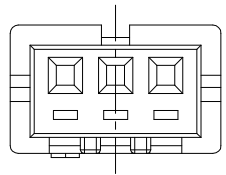


REV.	SPECIFICATION	ECN NO.	APPD.

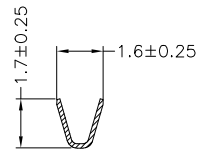
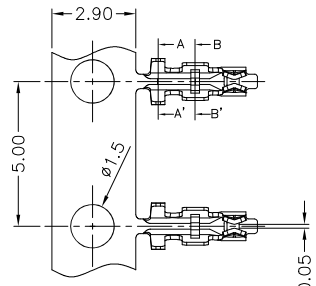
Material:
Housing: PA66, UL94V-0, Plae Pinkish Grey.
Contact: Phosphor Bronze, 60u" Tin Plated.
Wire Range: 28 to 32 AWG, OD: 1.0mm(max).
Electrical Specification:
Current Rating: 1 AMP.
Dielectric Withstanding Voltage: AC 500V.
Insulation Resistance: 500MΩ min.
Contact Resistance: 30mΩ max.
Operating Temperature: -25°C~+85°C.
***RoHS Compliant**



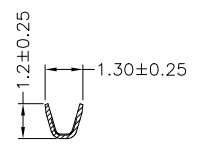
2P



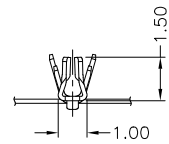
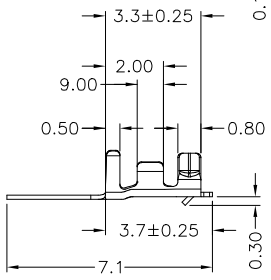
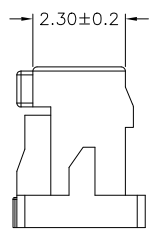
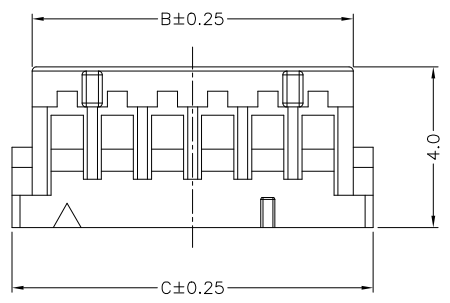
3P



SECTION A-A'



SECTION B-B'



Dimension			
Positions	A	B	C
02	1.25	3.00	4.00
03	2.50	4.25	5.25
04	3.75	5.50	6.50
05	5.00	6.75	7.75
06	6.25	8.00	9.00
07	7.50	9.25	10.25
08	8.75	10.50	11.50
09	10.00	11.75	12.75
10	11.25	13.00	14.00
11	12.50	14.25	15.25
12	13.75	15.50	16.50
13	15.00	16.75	17.75
14	16.25	18.00	19.00
15	17.50	19.25	20.25

4574- 1 X xx H B
Series Single Row No.of Positions H: Housing B: Bulk Package

4574- PIN-T-10K
Series Tin Plated 10K Pins Per Reel

Tolerances .x = ±0.3 .xx = ±0.15 .xxx = ±0.08	Dwg. No.	S3220200104-01		Title:	4574 Series 1.25mm Housing & Terminal ① 790	 DUPIN ELECTRONIC(KUNSHAN) CO., LTD.			
	Projection			P/N: 4574-1XxxHB&4574-PIN-T-10K					
	Unit	mm	Scale	1:N		SHEET	1/1	Ver.No.	X1
	Drawn By	Emma 01/04'21							