

REV.	SPECIFICATION	ECN NO.	APPD.
R2		ECN220326	

Material and Plating:

Housing:LCP, UL94V-0 , BLACK.

Power Contacts:High Conductivity Copper.

5u" gold plated on Contact Area and 80u" min Tin Plated on Solder Tail over nickel 50u" min.

Electrical Characteristics:

Current Rating: UL Certified 12.5A, UL/CSA certified 7A.

Dielectric Withstanding Voltage: AC 1000V For 1 minute.

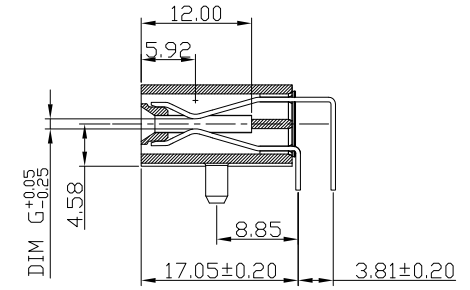
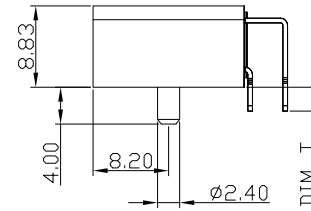
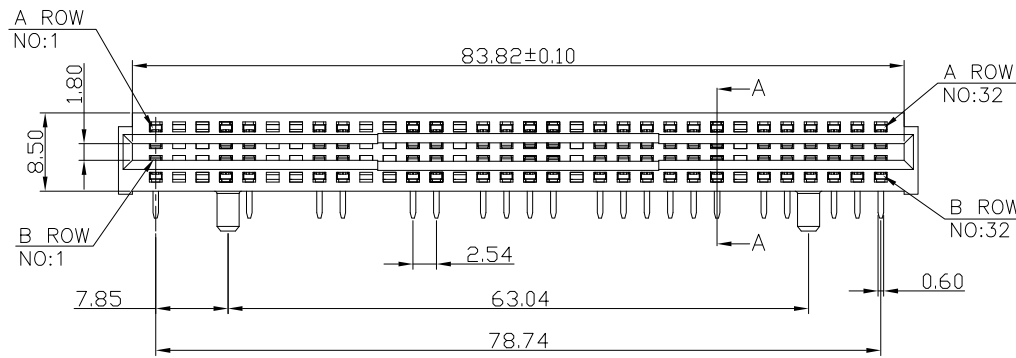
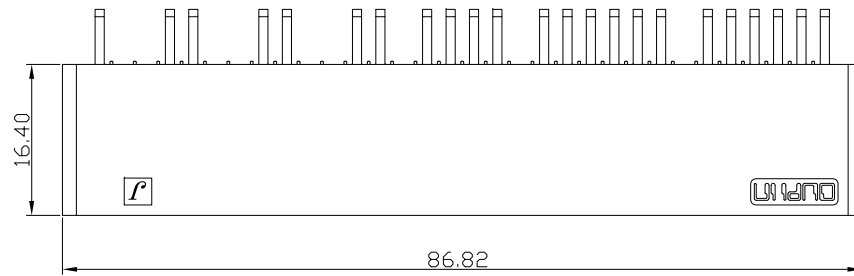
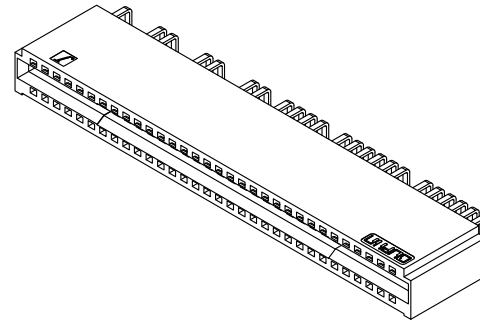
Insulator Resistance: 5000MΩ min. at DC 500V.

Contact Resistance: 2.5mΩ max. at DC 100mA.

Operating Temperature: -55°C ~+105°C .

***RoHS Compliant**

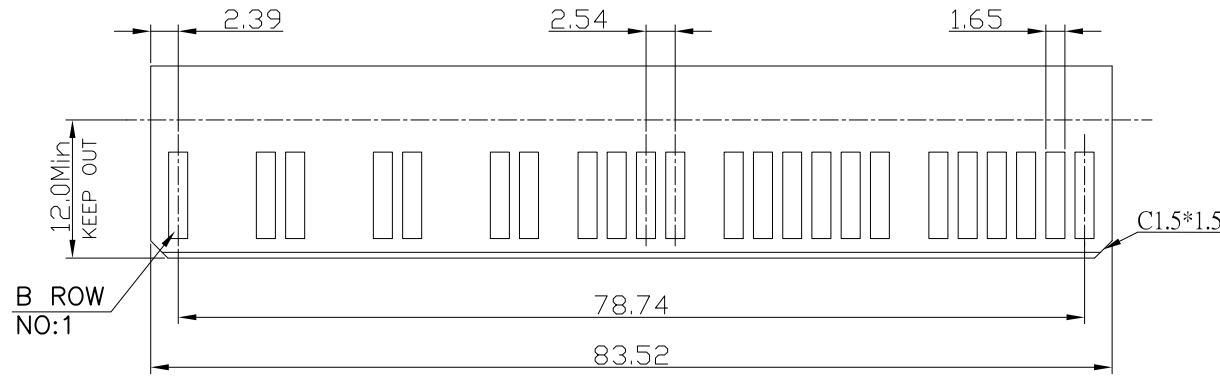
*Note: A,B RowP2,P3,P6,P7,P10,P11,P14, P19,P26 Without Contact



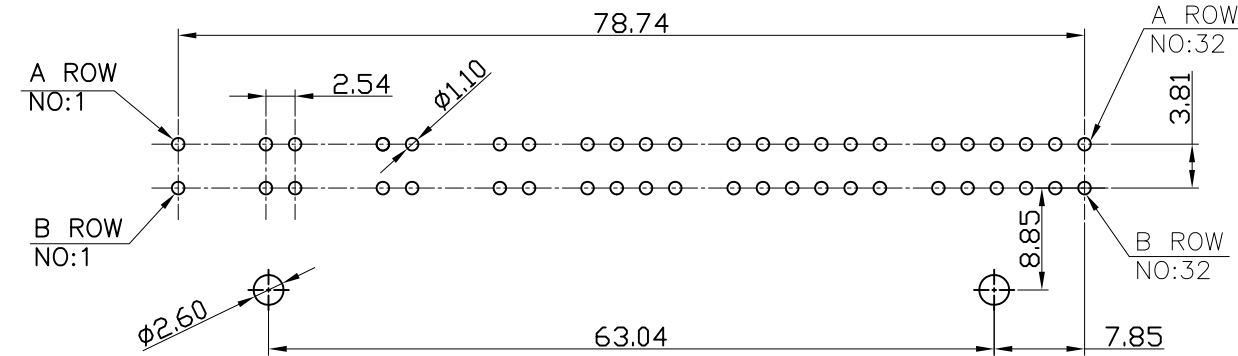
9393-J 4 1 P64 P 2 1 A C05 D A -A006
 Series
 4:Female-Right Angle
 1:Row Spacing 3.81
 Position
 P:With Post
 1:DIM T=3.5mm
 2:DIM T=2.6mm
 1:DIM G(GAP)=1.2mm
 Internal Code
 A: Tray Package
 D:Dip Type
 P:Press-Fit Type
 C: Selective Gold Plated
 05: 05u"
 A:Power pitch 2.54
 B:Power pitch 5.08

Tolerances	Dwg. No.	9393-D0000-071	Title:		OUPIN ELECTRONIC(KUNSHAN) CO., LTD. P/N: 9393-J41P64P21AC05DA-A006			
x = ±0.5	Projection		9393-J Series					
.x = ±0.25	Unit	mm	Scale	1:1	SHEET	1/2	Ver. No.	R2
.xx = ±0.15	Drawn By	XS 03/16'22						

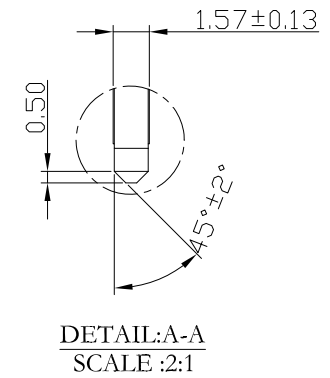
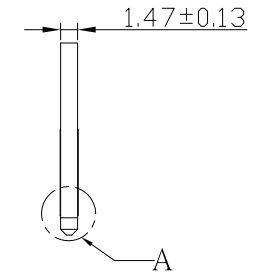
REV.	SPECIFICATION	ECN NO.	APPD.
R2		ECN220326	



RECOMMENDED MATTING BOARD FOOTPRINT
(Tolerance: ±0.05)



P.C. Board Layout
(Top View)
(Tolerance: ±0.05)



Tolerances	Dwg. No.	9393-D0000-071	Title:		OUPIN OUPIN ELECTRONIC(KUNSHAN) CO., LTD. P/N: 9393-J41P64P21AC05DA-A006			
x = ±0.5	Projection		9393-J Series					
.x = ±0.25	Unit	mm	Scale	1:1	Power Edge Connector		SHEET	2/2
.xx = ±0.15	Drawn By	XS 03/16'22			Ver. No.	R2		