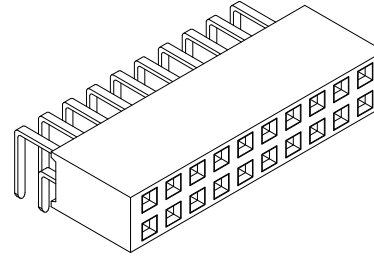
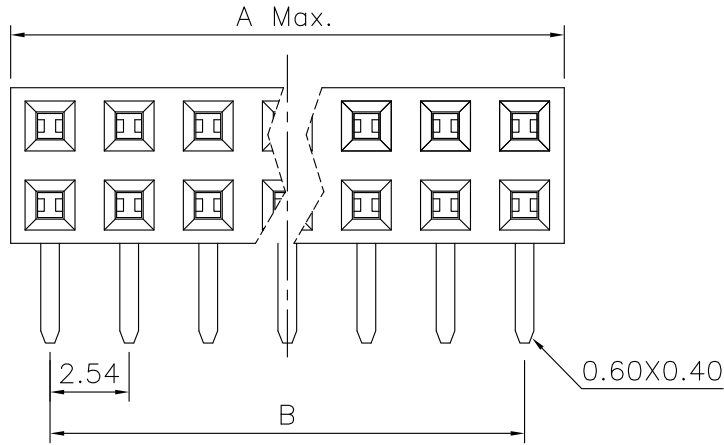


REV.	SPECIFICATION	ECN NO.	APPD.
R1		ECN230701	



Material and Plating:

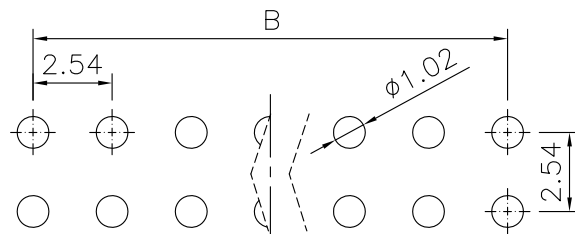
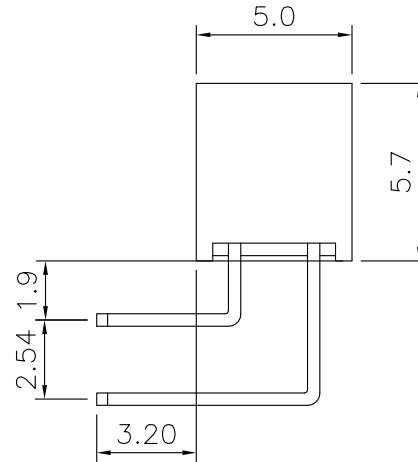
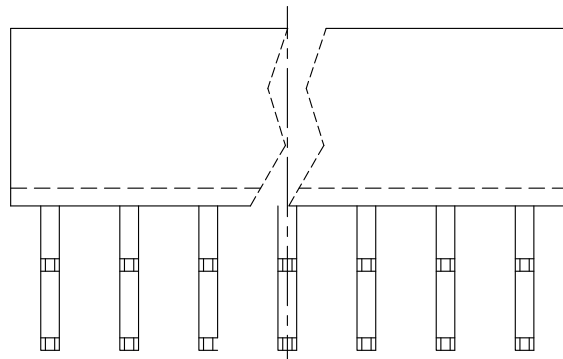
Housing: PBT,UL94V-0,BLACK.
 Contacts: Brass.
 Gold Plated or 80u" Min Tin Plated on Contact Area and 80u" Min Tin or Gold Flash Plated on Solder Tail over Nickel 50u"Min.

Electrical Characteristics:

Current Rating: 2 AMP.
 Dielectric Withstanding Voltage: AC 1000V For 1 minute.
 Insulator Resistance: 1000MΩ min. at DC 500V.
 Contact Resistance: 20mΩ max. at DC 100mA.
 Operating Temperature: -55°C~+105°C .

***RoHS Compliant**

Insertion Depth: 2.55mm to 3.80mm.



P.C. Board Layout
 (Tolerance: ±0.05mm)

2042- 2 X xx G xx R A -Q
 Series Double Row No. of Pin Per Row G: Gold Plated T: Tin Plated
 Internal Code
 A: Tray Package
 B: Bulk Package
 R: Right Angle
 00: G/F
 10: 10μ"
 15: 15μ"
 30: 30μ"

Position	4 Thru 80
Dimension	4 Thru 80
A	2.54 X No. of Position/2
B	2.54 X No. of Position/2-2.54

Tolerances	Dwg. No.	2042-D0000-019
x = ±0.5	Projection	
.x = ±0.25	Unit	mm
.xx = ±0.15	Scale	1:1
	Drawn By	JCQ 07/03'23

Title:
 2042 Series
 P.C.B. Socket
 2.54mmX2.54mm(0.100"X0.100")

OUPIN			
OUPIN ELECTRONIC(KUNSHAN) CO., LTD.			
P/N: 2042-2XxxGxxRA-Q			
SHEET	1/1	Ver.No.	R1