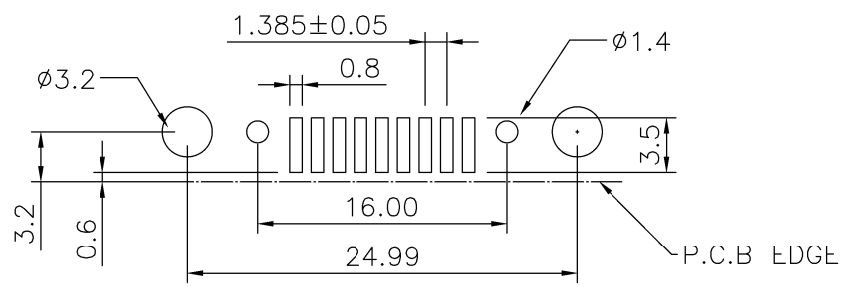
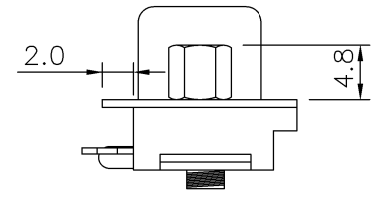
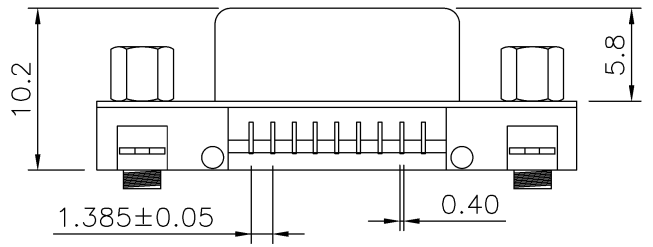
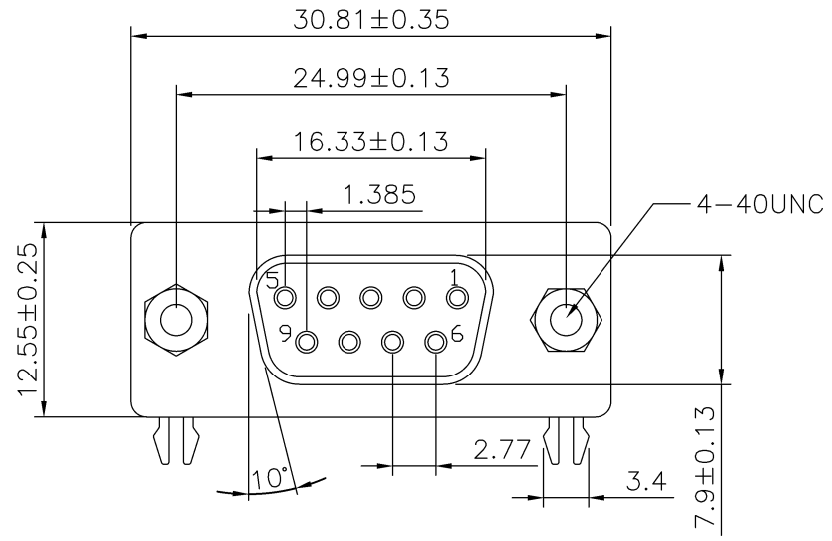


| | | | |
|------|---------------|---------|-------|
| REV. | SPECIFICATION | ECN NO. | APPD. |
| | | | |

Material:
Housing: LCP,UL94V-0.
Contacts: Phosphor Bronze , Gold Plated on Contact Area and 80u" Min Tin Plated on solder tail over Nickel 30u" Min.
Shell: Steel.
Electrical Characteristics:
Current Rating: 1 AMP.
Insulation Resistance: 1000MΩ min.
Contact Resistance: 20mΩ max.
Operating Temperature: -30°C~+105°C.
***RoHS Compliant**



7902-A 09 F Y C 00 D -L1 A

Series _____
Position _____
F: Female _____
Y: With Grounding Forks With Riveted Threaded Inserts and With Jack Screws Attached _____
C: Selective Gold Plated _____
A: Tray Package _____
L1: Lock Type _____
D: SMD Type _____
00: Gold Flash _____

P.C. Board Layout

| | | | | | |
|-------------------|-------------------|-----------------|--|-----|--|
| Tolerances | Dwg. No. | 7902D02011 | Title: | | OUPIIN OUPIIN ELECTRONIC(KUNSHAN) CO., LTD. P/N: 7902-A09FYC00D-L1A |
| x = ±0.50 | Projection | | 7902 Series | | |
| .x = ±0.25 | Unit | mm | Scale | 1:1 | |
| .xx = ±0.15 | Drawn By | Martin 09/22'22 | SLIM D-SUB Connector Right Angle SMD Type | | |
| | | | | | SHEET |
| | | | | | 1/1 |
| | | | | | Ver.No. |
| | | | | | A6 |