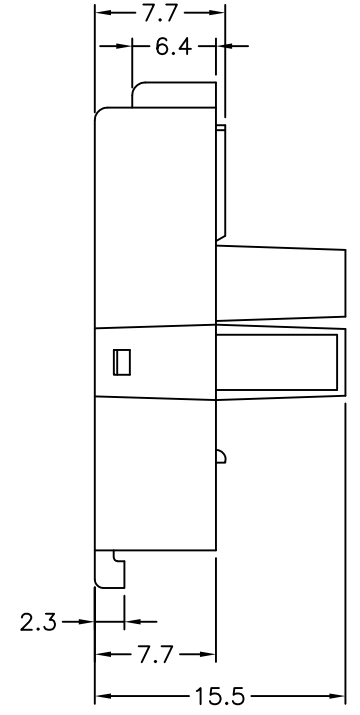
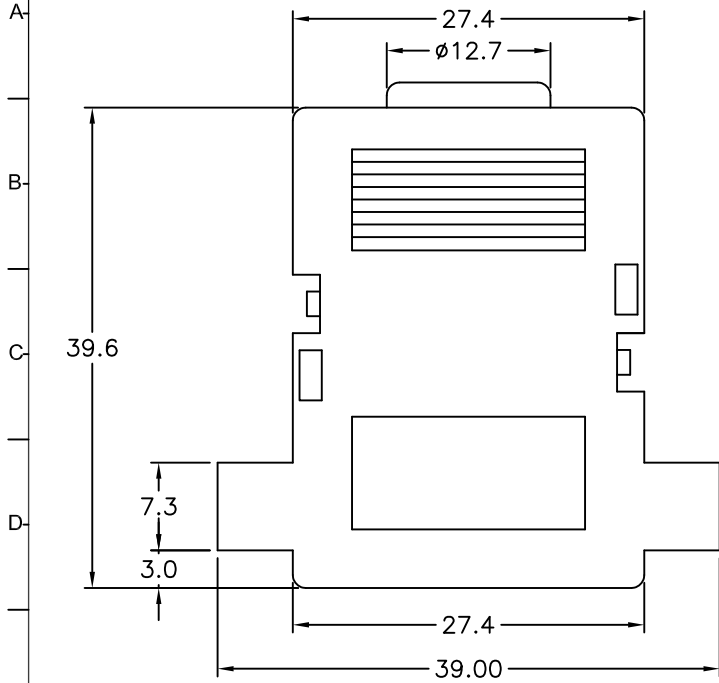
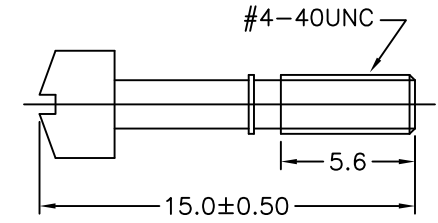
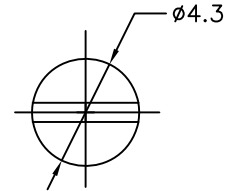


1 2 3 4 5 6 7 8 9 10 11 12

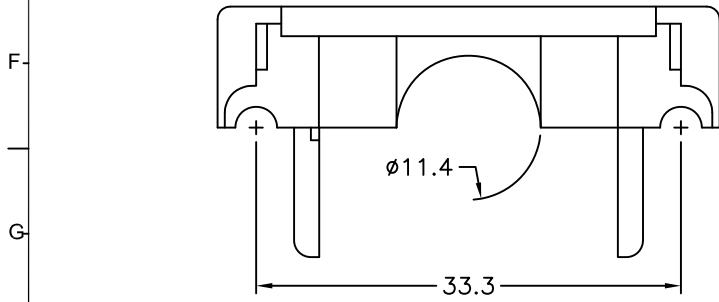
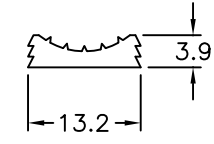
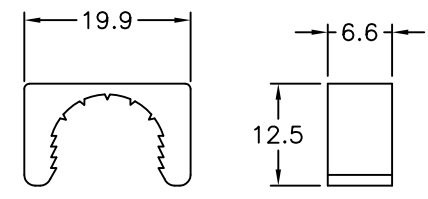
REV.	SPECIFICATION	ECN NO.	APPD.



**Material:**  
Insulator: ABS, UL94HB.  
Screw: Steel.  
**\*RoHS Compliant**



HW-S120EN00



DP- 15 Q Y B  
Series Position Q: Quick Lock Y: Grey B: Black  
C: Chrome  
(Plastic Metallized)  
B: Bulk Package P: Individual Package

Tolerances	Dwg. No.	DP00D00008	Title:					
x = $\pm 0.25$	Projection			DP Cover				
.x = $\pm 0.20$	Unit	mm	Scale					1:1
.xx = $\pm 0.15$	Drawn By	Scott	09/30'16					
					OUPIIN ELECTRONIC(KUNSHAN) CO., LTD.			
				SHEET	1/1	Ver.No.	A6	

1 2 3 4 5 6 7 8 9 10 11 12