

REV.	SPECIFICATION	ECN NO.	APPD.

Material:

Housing: LCP, UL94V-0.

Contacts: C18150 R480, Gold Plated on Contact Area and 80u" Matte Tin Plated on Solder tail over Nickel 50u".

Shell: Steel, 50u" Nickel Plated.

Electrical Characteristics:

Current Rating: 5.0A for VBUS and GND.

(i.e., Pins A4, A9, B4, B9)

1.25A for Vconn and GND.

(i.e., Pins B5, A1, A12, B1, B12)

0.25A for all the others contacts.

Dielectric Withstanding Voltage: AC 100V.

Insulator Resistance: 100MΩ min.


Contact Resistance: 40mΩ max.

Operating Temperature: -55°C~+85°C.

***Date Rate: 10Gbps**

***RoHS Compliant.**

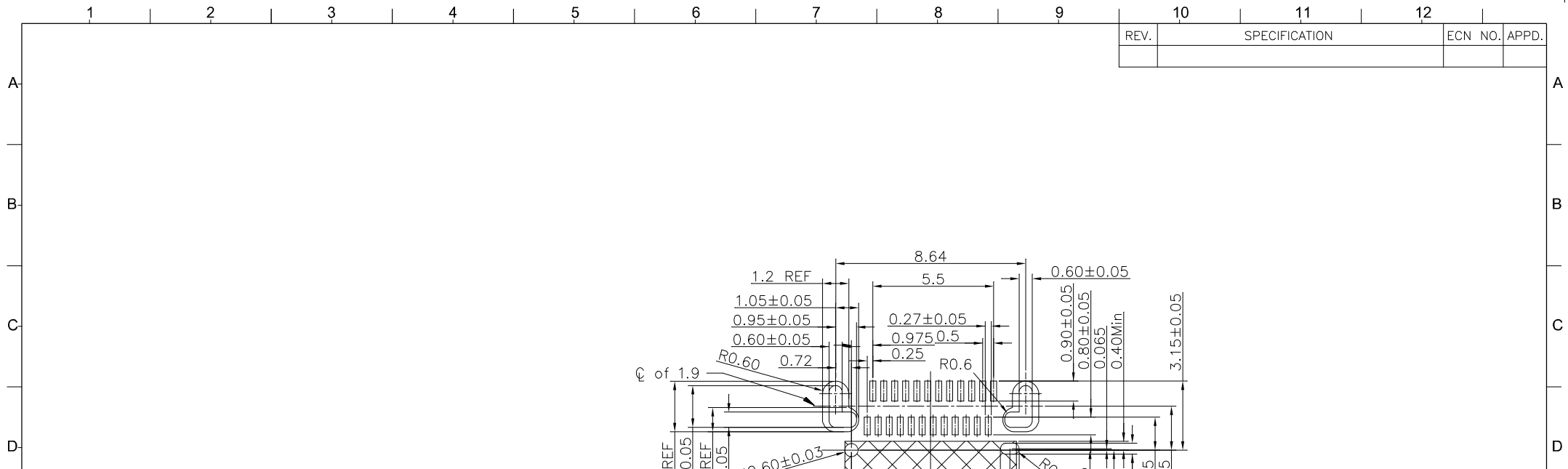
8975- C 24 C30 D B 13 P T
 Series ——— C: C Type ——— Position ——— C00: Selective Gold Plated Gold Flash C30: Selective Gold Plated 30u" ——— D: SMD Type ——— B: Black ——— Type 13 ——— P: With Post ——— T: Tape & Reel Package

Tolerances	Dwg No.	8975D02009		Title:	8975 Series
X. = ±0.30	Projection	⊕ ⊖		USB 3.2 Gen2 10Gbps	 OUPIN ELECTRONIC(KUNSHAN) CO., LTD. P/N: 8975-C24C30DB13PT
.X = ±0.20	Unit	mm	Scale	1:1	
.XX = ±0.10	Drawn By	Martin 12/21'23		Type C SMD Type	

① 661

SHEET	1/2	Ver. No.	A2
-------	-----	----------	----

REV.	SPECIFICATION	ECN NO.	APPD.



Pin	Signal Name	Pin	Signal Name
A1	GND	B12	GND
A2	SSTXP1	B11	SSRXP1
A3	SSTXn1	B10	SSRXN1
A4	VBUS	B9	VBUS
A5	CC1	B8	SBU2
A6	Dp1	B7	Dn2
A7	Dn1	B6	Dp2
A8	SBU1	B5	CC2
A9	VBUS	B4	VBUS
A10	SSRXn2	B3	SSTXn2
A11	SSRXp2	B2	SSTXp2
A12	GND	B1	GND

P.C.Board Layout

- 1.TOP VIEW, PCB TOLERANCE: ±0.05
2. No PCB routing allowed in this area.

Tolerances	Dwg No.	8975D02009	Title:	8975 Series	 OUPIIN ELECTRONIC(KUNSHAN) CO., LTD. P/N: 8975-C24C30DB13PT
X. = ±0.30	Projection			USB 3.2 Gen2 10Gbps	
.X = ±0.20	Unit	mm	Scale	1:1	SHEET
.XX = ±0.10	Drawn By	Martin 12/21'23	① 661	Type C SMD Type	2/2
					Ver. No.
					A2