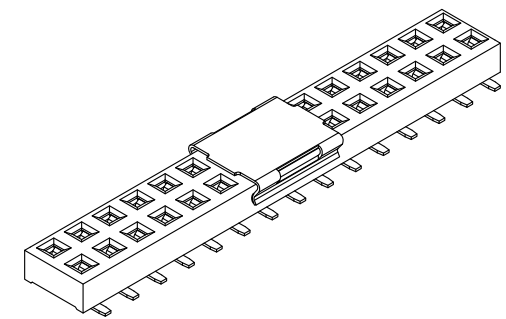
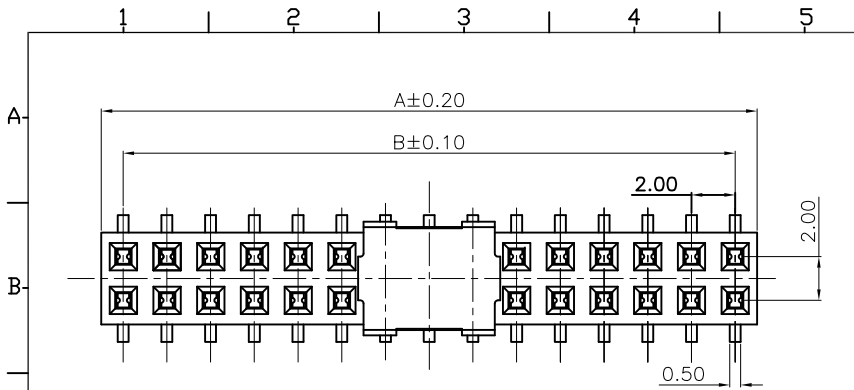


REV.	SPECIFICATION	ECN NO.	APPD.
R11		ECN230915	



**Material and Plating:**

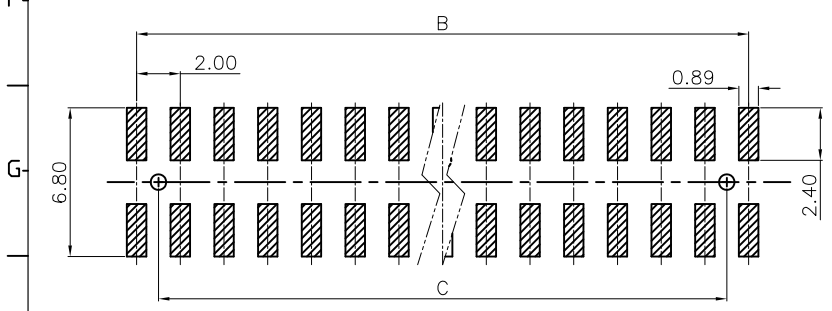
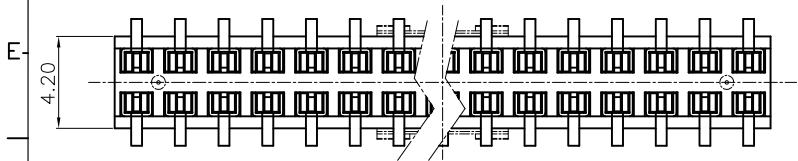
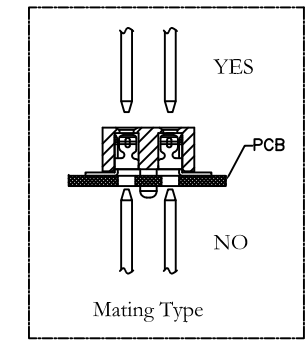
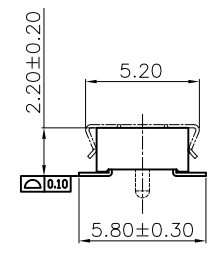
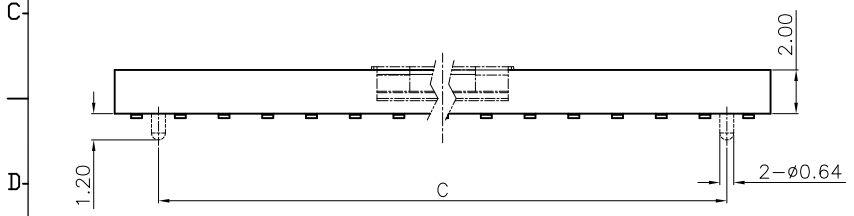
Housing: LCP, UL94V-0 Black  
 Contacts: Phosphor Bronze  
 Gold Plated on Contact Area and 80u" Min Tin or Gold Flash Plated on Solder Tail over Nickel 50u" Min.

**Electrical Characteristics:**

Current Rating: 1 A.  
 Dielectric Withstanding Voltage: AC 500V For 1 Minute.  
 Insulator Resistance: 1000MΩ min. at DC 500V.  
 Contact Resistance: 20mΩ max. at DC 100mA.  
 Operating Temperature: -65°C ~+125°C .

**\*RoHS Compliant**

Top Entry Insertion Depth: 1.50mm to 1.90mm.



P.C.Board Layout  
 (Tolerance:±0.05)

2146- 2 X xx G xx D x T -X  
 Series: S:Mylar  
 Double Row: Blank: W/O Pad  
 No.of: M: Metal Pad  
 Pin Per Row: T: Tape Reel Package  
 G: Gold Plated U: Tube Package  
 T: Tin Plated P: With Post  
 C: Dip Tin N: Without Post  
 Contact Gold D: SMD Type  
 00: G/F  
 10: 10 12°  
 15: 15 12°  
 30: 30 12°

Position	06 Thru 60
Dimension	
A	2.0 x No.of Positions/2
B	2.0 x No of Positions/2-2.0
C	2.0 x No of Positions/2-4.0

Tolerances	Dwg. No.	2146-D0000-001
x = ±0.5	Projection	
.x = ±0.25	Unit	mm
.xx = ±0.15	Scale	1:1
	Drawn By	JCQ 09/06'23

Title: 2146 Series  
 P.C.B. Socket 2.0  
 SMD Type Top Entry

OUPIIN ELECTRONIC(KUNSHAN) CO., LTD.			
P/N: 2146-2XxxGxxDxT-x			
SHEET	1/1	Ver.No.	R11