

REV.	SPECIFICATION	ECN NO.	APPD.

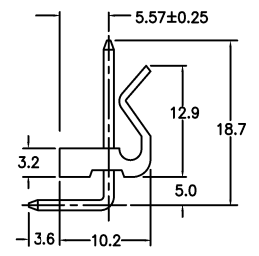
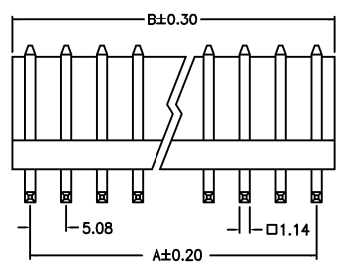
**Material:**

Housing: PA66, UL94V-2.  
 Contacts: Brass, 100~120u" Tin Plated over Nickel 20~50u".

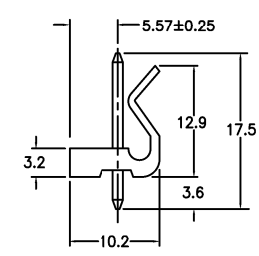
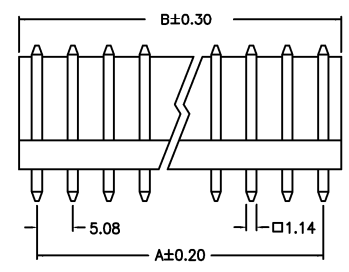
**Electrical Characteristics:**

Current Rating: 7 AMP.  
 Voltage Rating: 250V AC/DC.  
 Dielectric Withstandeind Voltage: AC 1500V For 1 minute.  
 Contact Resistance: 20mΩ max. at DC 100mA.  
 Insulation Resistance: 1000MΩ min. at DC 500V.  
 Operating Temperature: -25°C~+105°C

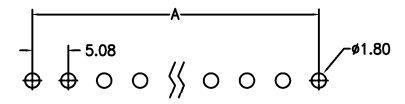
**\*RoHS Compliant**



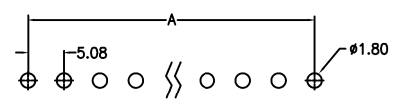
Right Angle



Straight



P.C. Board Layout



P.C. Board Layout

4871- xx T x B  
 Series No. of Position T: Tin Plated S: Straight B: Bulk Package  
 R: Right Angle

Positions	02 Thru 10
Dimension	
A	5.08 X No. of Positions-5.08
B	5.08 X No. of Positions+0.06

Tolerances	Dwg. No.	4871D01002	Title:
x = ±0.5	Projection		4871 Series
.x = ±0.25	Unit	mm	5.08 Wafer
.xx = ±0.15	Scale	1:1	
	Drawn By	Emma 11/02'20	

⑦ 704

OUPIIN ELECTRONIC(KUNSHAN) CO., LTD.			
P/N: 4871-xxTRB&4871-xxTSB			
SHEET	1/1	Ver.No.	A6