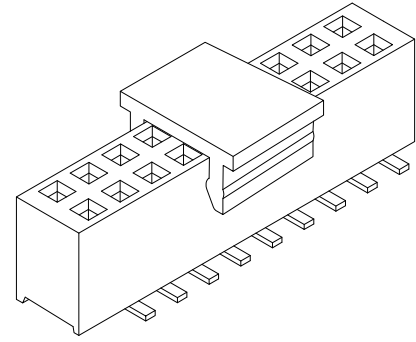
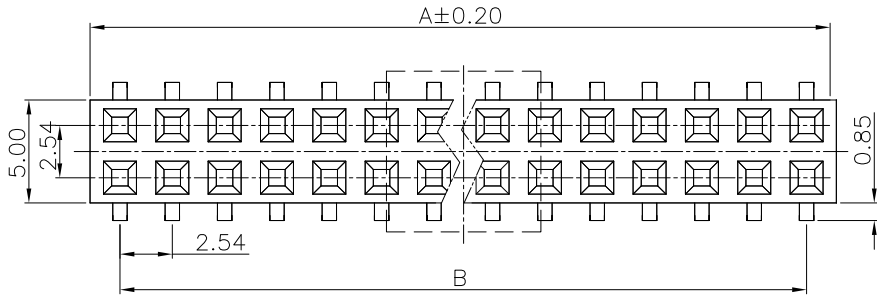


REV.	SPECIFICATION	ECN NO.	APPD.
R7		ECN200749	



Material and Plating:

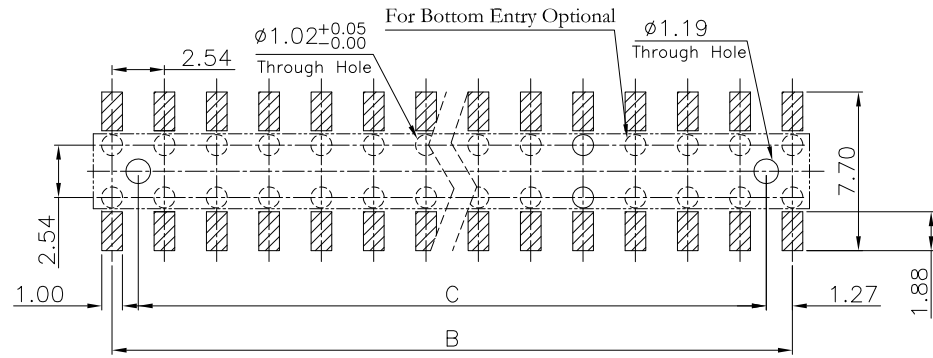
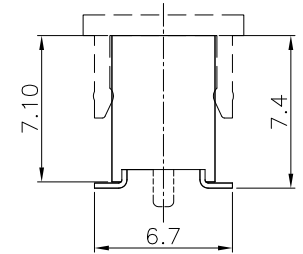
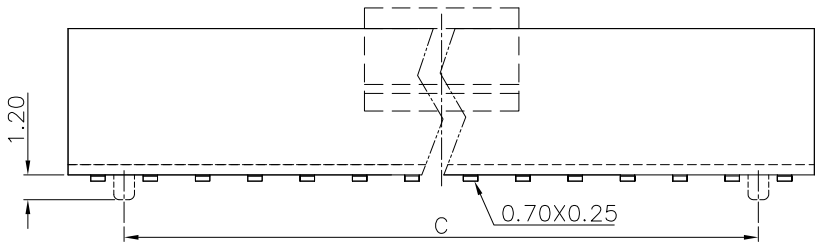
Housing: LCP, UL94V-0,Black.
Contacts: Phosphor Bronze.
 Gold Plated or 80u" Min Tin Plated on Contact Area and 80u" Min Tin or Gold Flash Plated on Solder Tail over Nickel 50u"Min.

Electrical Characteristics:

Current Rating: 3 AMP (With 8 pin) .
Dielectric Withstanding Voltage: AC 1000V For 1 minute.
Insulator Resistance: 1000MΩ min. at DC 500V.
Contact Resistance: 20mΩ max. at DC 100mA.
Operating Temperature: -55°C~+105°C .

***RoHS Compliant**

Insertion Depth: 2.55mm to 6.40mm.
Bottom Entry Insertion Depth: 7.15mm min.
 (Excluding PCB Thickness).



P.C. Board Layout
 (Tolerance: ±0.05mm)

Series: 2043-
 Double Row: 2
 No. of Pin Per Row: X xx
 Plating: G xx
 Package: D x x -x
 Blank: W/O Pad
 P: Plastic Pad
 U: Tube Package
 T: Tape & Reel Package
 P: With Post
 N: Without Post
 D: SMD Type Mount

00: G/F
 10: 10u"
 15: 15u"
 30: 30u"

Position Dimension	4 Thru 80
A	2.54 x No.of Positions/2
B	2.54 x No of Positions/2 -2.54
C	2.54 x No of Positions/2 -5.08

Tolerances	Drawn No.	2043-D0000-004
x = ±0.5	Projection	
.x = ±0.25	Unit	mm
.xx = ±0.15	Scale	1:1
	Drawn By	WQ 07/20'20

Title: 2043 Series
 P.C.B. Socket
 2.54mm(0.100")

OUPIN
 OUPIN ELECTRONIC(KUNSHAN) CO., LTD.
 P/N: 2043-2XxxGxxDxx-x
 SHEET 1/1 Ver.No. R7