

REV.	SPECIFICATION	ECN NO.	APPD.

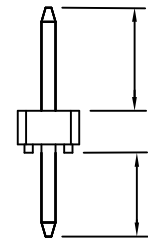
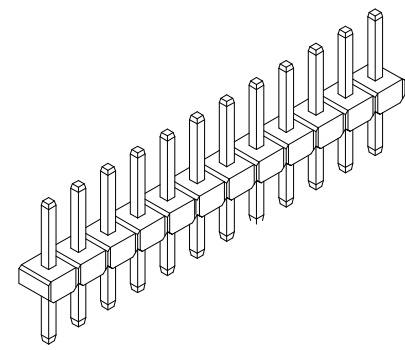
Material:

Housing: PA9T, UL94V-0, Black.
 Contacts: Brass, Gold Plated over Nickel 30~50u"
 or 80~120u" Matte Tin Plated over Nickel
 30~50u".

Electrical Characteristics:

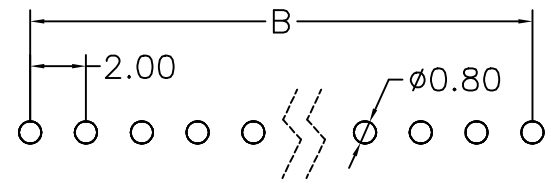
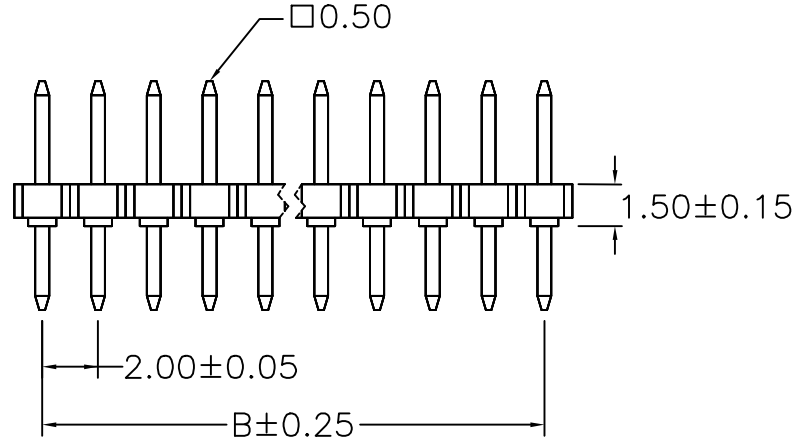
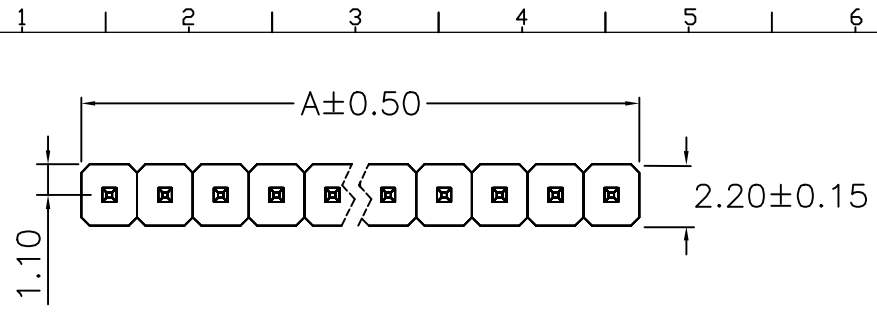
Voltage Rating: 125V.
 Current Rating: 2 AMP.
 Dielectric Withstanding Voltage: 500V.
 Insulator Resistance: 1000MΩ min.
 Contact Resistance: 20mΩ max.
 Operating Temperature: -40°C~+105°C.

***RoHS Compliant**



L2±0.25: Mate Length

L1±0.25: Dip Length



P.C. Board Layout

Standard item:
 ie: 2111-1XxxG00SB
 Total Length 8.2mm, Dip 3.0mm, Mate 3.7mm.
 Custom item:
 ie: 2111-1XxxG00S-3-4B(2111-1XxxG00S-L1-L2B)
 3.0mm Dip Length (increment of 0.1mm)
 4.0mm Mate Length (increment of 0.1mm)

2111- 1 X xx G 00 S B
 Series
 Single Row
 No. of Pin Per Row
 G:Gold Plated
 T:Matte Tin Plated
 B: Bulk Package
 S: Straight
 00: Gold Flash
 10: 10u"
 15: 15u"
 30: 30u"
 Blank: For Matte Tin Plated

Dimension					
Positions	A	B	Positions	A	B
02	4.00				
03	6.00	4.00	22	44.00	42.00
04	8.00	6.00	23	46.00	44.00
05	10.00	8.00	24	48.00	46.00
06	12.00	10.00	25	50.00	48.00
07	14.00	12.00	26	52.00	50.00
08	16.00	14.00	27	54.00	52.00
09	18.00	16.00	28	56.00	54.00
10	20.00	18.00	29	58.00	56.00
11	22.00	20.00	30	60.00	58.00
12	24.00	22.00	31	62.00	60.00
13	26.00	24.00	32	64.00	62.00
14	28.00	26.00	33	66.00	64.00
15	30.00	28.00	34	68.00	66.00
16	32.00	30.00	35	70.00	68.00
17	34.00	32.00	36	72.00	70.00
18	36.00	34.00	37	74.00	72.00
19	38.00	36.00	38	76.00	74.00
20	40.00	38.00	39	78.00	76.00
21	42.00	40.00	40	80.00	78.00

Tolerances	Dwg. No.	2111D01001	Title:	
.x = ±0.38	Projection		2111 Series	
.xx = ±0.25	Unit	mm	Pin Header 2.0mm	
	Scale	1:N	Single Row Straight Solder Type	
	Drawn By	Martin 08/12'21	Ø 325	

OUPIIN			
OUPIIN ELECTRONIC(KUNSHAN) CO., LTD.			
P/N: 2111-1XxxG00SB			
SHEET	1/1	Ver.No.	B3