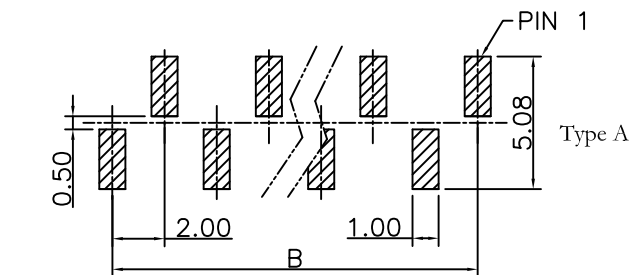
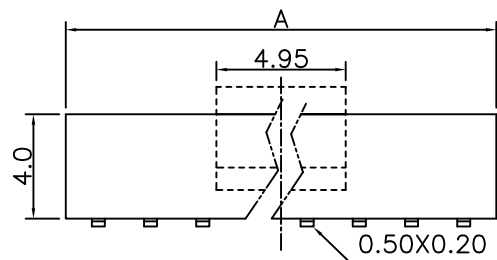
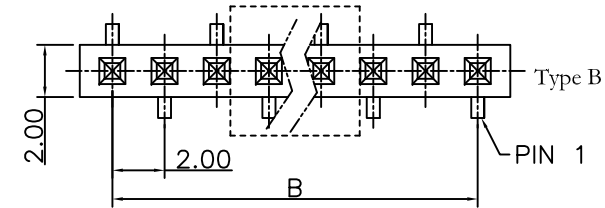
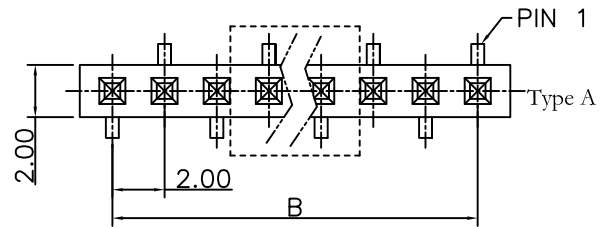
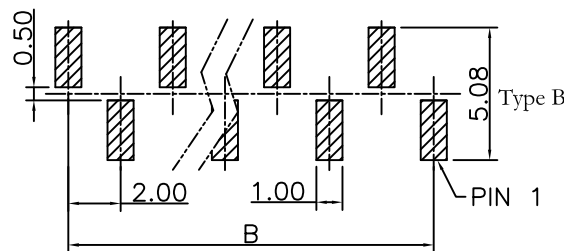
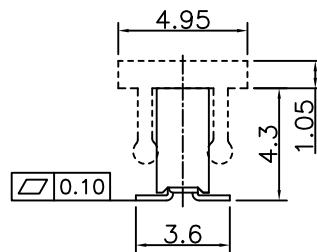


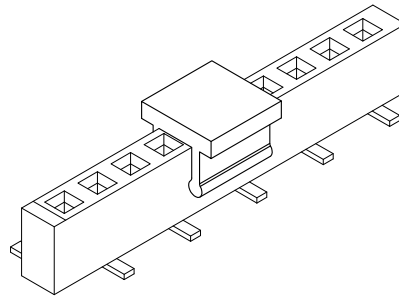
REV.	SPECIFICATION	ECN NO.	APPD.
R4		ECN230413	



P.C. Board Layout  
(Tolerance:±0.05)



P.C. Board Layout  
(Tolerance:±0.05)



**Material and Plating:**

Housing: LCP, UL94V-0, Black.

Contacts: Phosphor Bronze.

Gold Plated or 80u" min Tin on Contact Area and Gold Flash Plated or 80u" min Tin on Solder tail over 50u" min Nickel.

**Electrical Characteristics:**

Current Rating: 1 AMP.

Dielectric Withstanding Voltage: AC 500V For 1 minute.

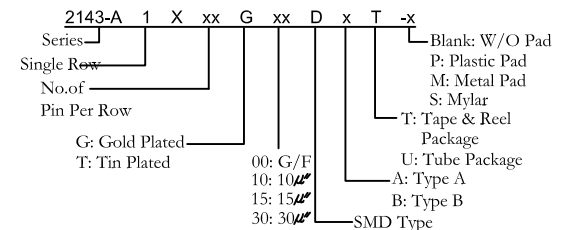
Insulator Resistance: 1000MΩ min. at DC 500V.

Contact Resistance: 20mΩ max. at DC 100mA.

Operating Temperature: -65°C~+125°C.

**\*RoHS Compliant**

Insertion Depth: 2.20mm to 3.80mm.



Position	2 Thru 40
Dimension	
A	2.0 x No. of Positions
B	2.0 x No. of Positions-2.0

Tolerances	Dwg No.	2143-D0000-004	Title:
x = ±0.5	Projection		2143 Series
.x = ±0.25	Unit	mm	P.C.B Socket 2.0mm
.xx = ±0.15	Scale	1:1	
	Drawn By	JCQ 04/10'23	

<b>OUPIN</b>			
OUPIN ELECTRONIC(KUNSHAN) CO., LTD.			
P/N: 2143-A1XxxGxxDxT-x			
SHEET	1/1	Ver. No.	R4