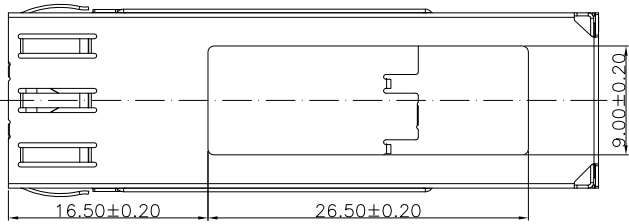
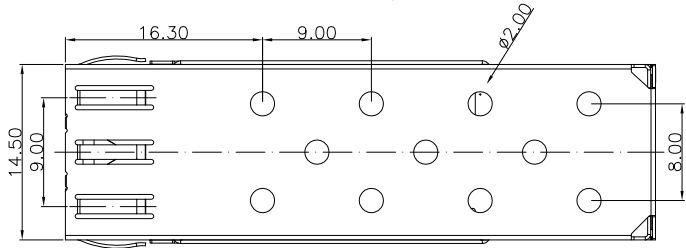


| | | | |
|------|---------------|-----------|-------|
| REV. | SPECIFICATION | ECN NO. | APPD. |
| R2 | | ECN210649 | |

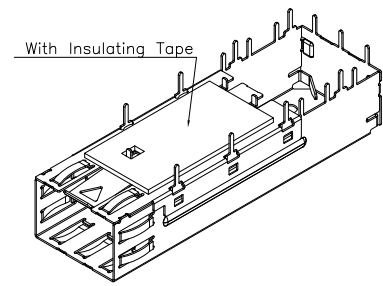
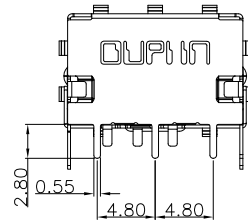
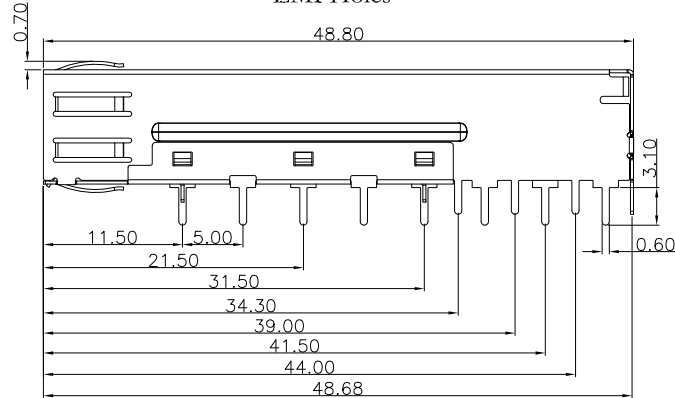
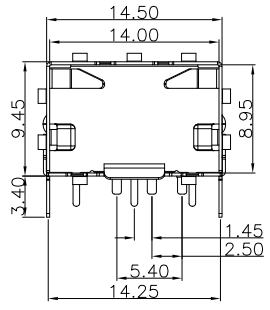
Material:
 Cage: Cu-Ni Alloy.
Electrical Characteristics:
 Operating Temperature: -55°C~+105°C.
***RoHS Compliant**



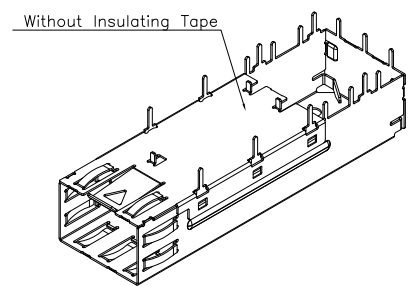
Heatsink Opening



EMI Holes



With Insulating Tape



Without Insulating Tape

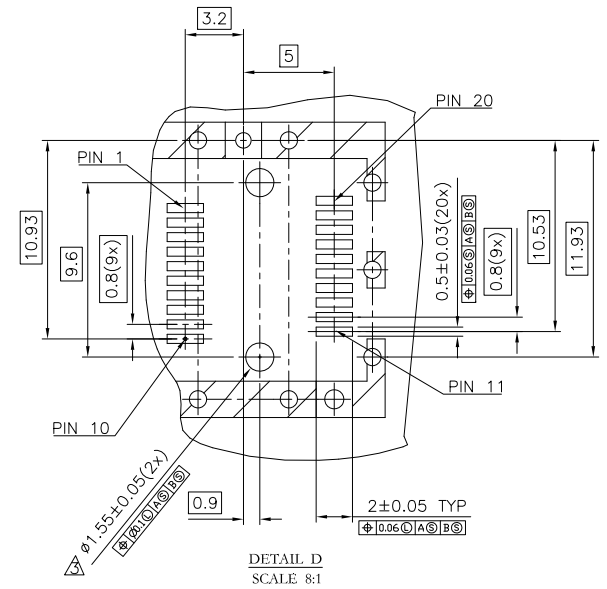
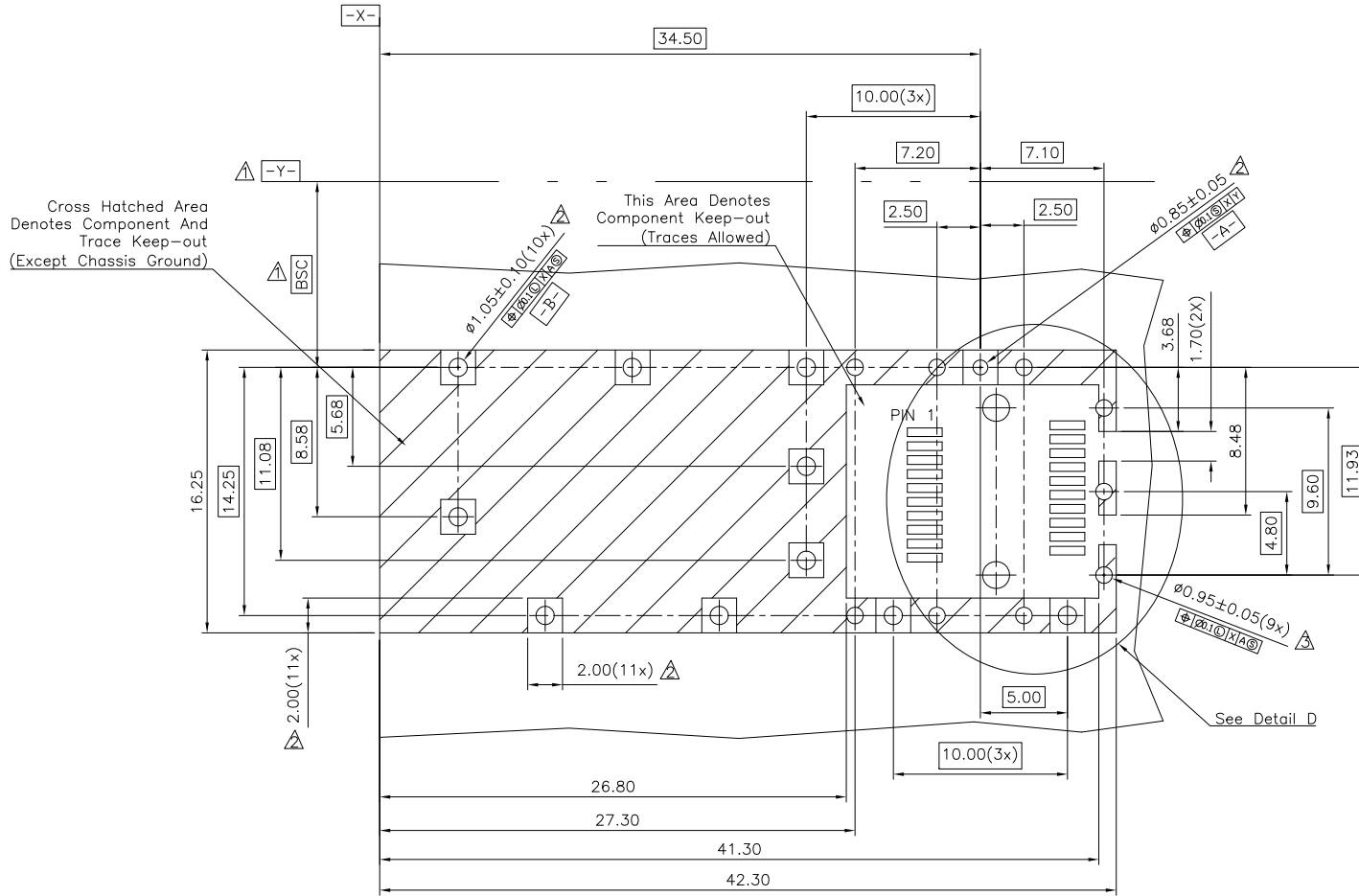
8951- 1 S S 0 x A
 Series | Ports | S: Dip Type | S: Spring | 0: Without Light Pipe | 1: With Light Pipe
 A: Tray Package
 0: Heatsink Opening, Without Insulating Tape
 1: EMI Holes, Without Insulating Tape
 2: Heatsink Opening, With Insulating Tape
 3: EMI Holes, With Insulating Tape

| | | | | | |
|-------------|------------|----------------|-------------|-----|---|
| Tolerances | Dwg No. | 8951-D0000-009 | Title: | | OUPIN ELECTRONIC(KUNSHAN) CO., LTD. P/N: 8951-1SS0xA SHEET 1/3 Ver.No. R2 |
| x = ±0.5 | Projection | | 8951 Series | | |
| .x = ±0.25 | Unit | mm | Scale | 1:1 | |
| .xx = ±0.15 | Drawn By | WP 06/28'21 | SFP Cage | | |

| | | | |
|------|---------------|-----------|-------|
| REV. | SPECIFICATION | ECN NO. | APPD. |
| R2 | | ECN210649 | |

Notes:

1. Datum and basic dimensions established by customer.
2. Pads and vias are chassis ground, 11 places.
3. Thru holes, plating optional



P.C. Board Layout
(Tolerance:±0.05)

| | | | | |
|-------------|------------|----------------|-------|-------------|
| Tolerances | Dwg No. | 8951-D0000-009 | | Title: |
| x = ±0.5 | Projection | | | 8951 Series |
| .x = ±0.25 | Unit | mm | Scale | 1:1 |
| .xx = ±0.15 | Drawn By | WP 06/28'21 | | SFP Cage |

8951 Series
SFP Cage

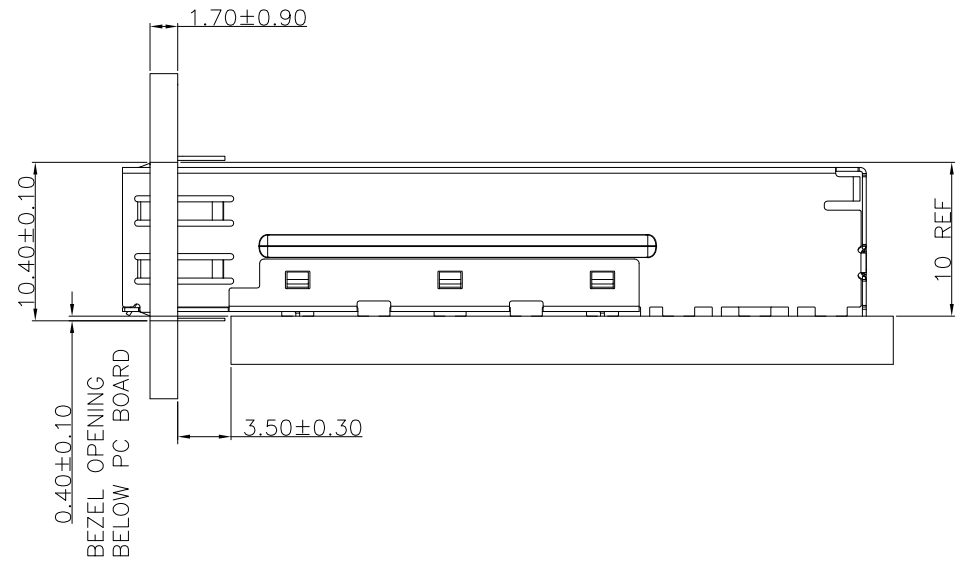
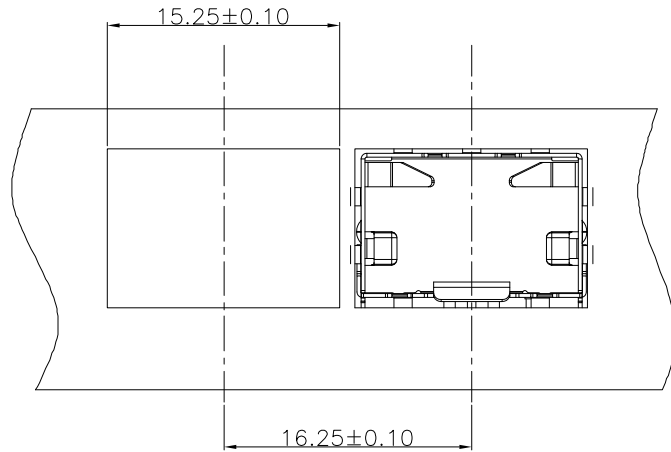


OUPIIN ELECTRONIC(KUNSHAN) CO., LTD.

P/N: 8951-1SS0xA

| | | | |
|-------|-----|---------|----|
| SHEET | 2/3 | Ver.No. | R2 |
|-------|-----|---------|----|

| | | | |
|------|---------------|-----------|-------|
| REV. | SPECIFICATION | ECN NO. | APPD. |
| R2 | | ECN210649 | |



| | | | | |
|-------------|------------|----------------|-------|-------------|
| Tolerances | Dwg No. | 8951-D0000-009 | | Title: |
| x = ±0.5 | Projection | | | 8951 Series |
| .x = ±0.25 | Unit | mm | Scale | 1:1 |
| .xx = ±0.15 | Drawn By | WP 06/28'21 | | SFP Cage |

| | | | |
|-------------|--|--|--|
| Title: | | | |
| 8951 Series | | | |
| SFP Cage | | | |

| | | | |
|-------------------------------------|-----|---------|----|
| | | | |
| OUPIN ELECTRONIC(KUNSHAN) CO., LTD. | | | |
| P/N: 8951-1SS0xA | | | |
| SHEET | 3/3 | Ver.No. | R2 |