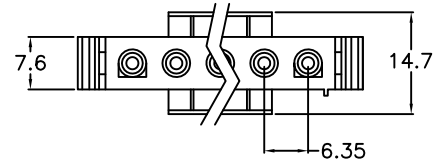
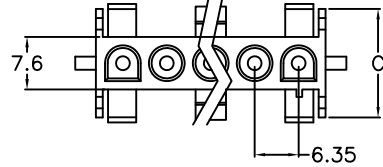


REV.	SPECIFICATION	ECN NO.	APPD.

4977-1XxxMH



4977-1XxxFH



**Material:**

Housing: PA66, UL94V-2.

**Electrical Characteristics:**

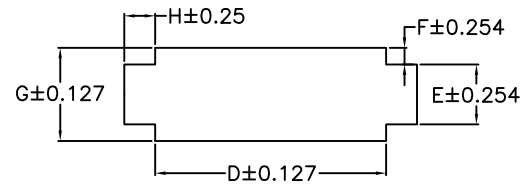
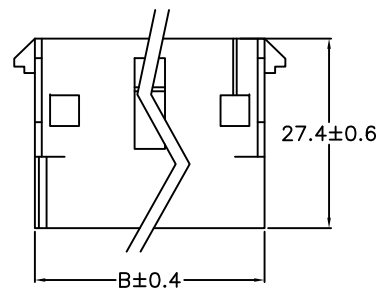
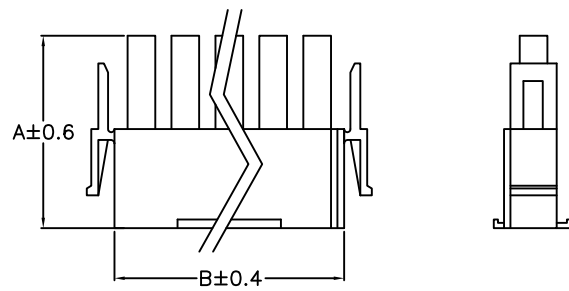
Voltage Rating: 600V.

Dielectric Withstanding Voltage: AC 5000V for 1minute.

Insulation Resistance: 1000MΩ min.

Operating Temperature: -55°C~+105°C.

**\*RoHS Compliant**



Panel must be punched so that housing enters panel in same direction as the punch.

Position	Dimension								
	A	B		C	D	E	F	G	H
		Male	Female						
2	27.7	14.25	13.97	15.7	14.35	8.64	2.41	13.46	4.45
3	27.8	20.30		15.7	20.70	8.64	2.41	13.46	4.45
4	27.6	26.67		15.7	27.05	8.64	2.41	13.46	4.45
5	27.8	33.20		15.7	33.40	8.64	2.41	13.46	4.45
6	27.4	39.40		15.85	39.80	3.90	4.80	13.50	3.20
7	27.4	45.70		15.85	46.15	3.90	4.80	13.50	3.20
8	27.4	52.10		15.85	52.50	3.90	4.80	13.50	3.20
9	27.4	58.40		15.85	58.85	3.90	4.80	13.50	3.20
10	27.4	64.8		15.85	65.20	3.90	4.80	13.50	3.20

4977- 1 X xx M H B  
 Series Single No. of M:Male H: Housing B: Bulk Package  
 Row Pin Per Row F:Female

<b>Tolerances</b>	<b>Dwg. No.</b>	4977D03003		<b>Title:</b>	
x = ±0.5	<b>Projection</b>	⊕ ◀		4977 Series 6.35mm Housing	
.x = ±0.4	<b>Unit</b>	mm	<b>Scale</b>		1:1
.xx = ±0.25	<b>Drawn By</b>	Scott 09/05'16			⑦ 732

<b>OUPIN</b>			
OUPIN ELECTRONIC(KUNSHAN) CO., LTD.			
P/N:4977-1XxxMHB&4977-1XxxFHB			
SHEET	1/1	Ver.No.	A4