

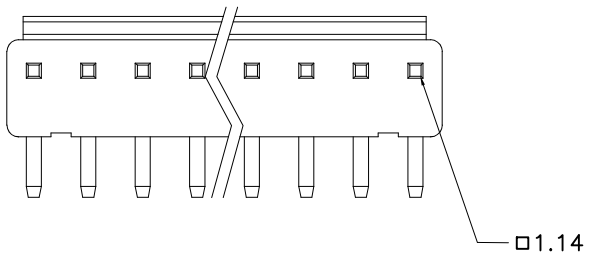
REV.	SPECIFICATION	ECN NO.	APPD.
A6			

Material:
Housing: PA66, UL94V-0.
Contacts: Brass, 70u" Tin Plated over 30u" Nickel.

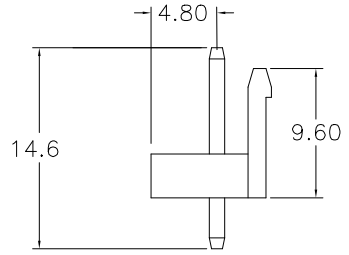
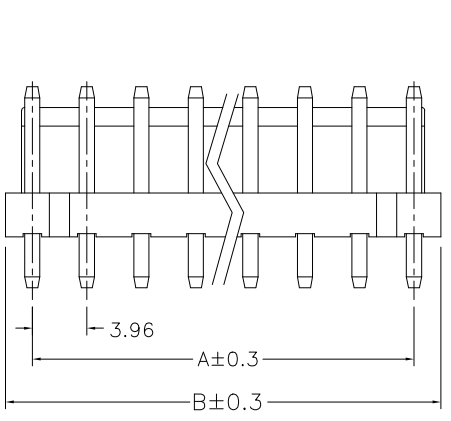
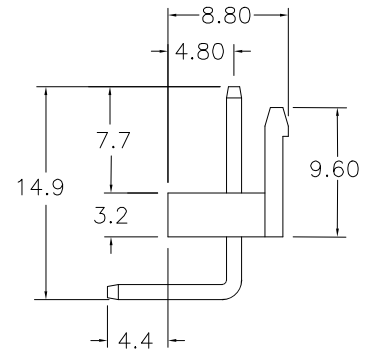
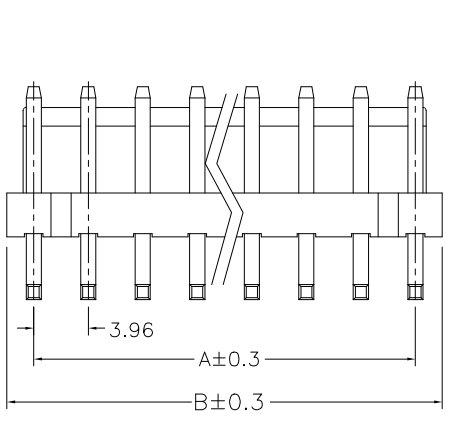
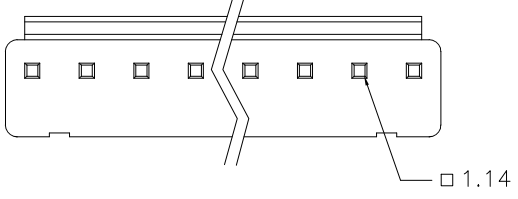
Electrical Characteristics:
Current Rating: 7 AMP.
Dielectric Withstanding Voltage: AC 1500V.
Insulation Resistance: 1000MΩ min.
Contact Resistance: 10mΩ max.
Operating Temperature: -25°C~+105°C.

***RoHS Compliant**

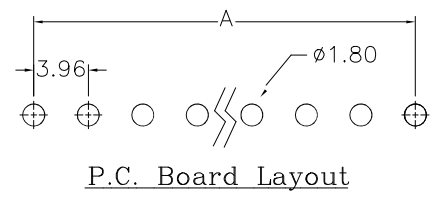
4776-xxTRxB



4776-xxTSxB



Positions	Dimension	
	A	B
02	3.96	7.92
03	7.92	11.92
04	11.88	15.84
05	15.84	19.84
06	19.80	23.80
07	23.76	27.88
08	27.72	31.74
09	31.68	35.86
10	35.64	39.60
11	39.60	43.84
12	43.56	47.92
13	47.52	51.72
14	51.48	55.92



4776-xx T X X B
Series No.of Positions T: Tin Plated S: Straight R: Right Angle X: Blank: White G: Green U: Blue E: Yellow R: Red B: Black

Tolerances	Dwg. No.	4776D01001	Title:		 OUPIN ELECTRONIC(KUNSHAN) CO., LTD. P/N: 4776-xxTxxB SHEET 1/1 Ver.No. B2
.x = ±0.35	Projection		4776 Series		
.xx = ±0.25	Unit	mm	Scale	1:N	
.xxx = ±0.15	Drawn By	Martin 06/13'23	3.96mm Wire to Board		
			① 704		