

REV.	SPECIFICATION	ECN NO.	APPD.
R4		ECN211004	

Material and Plating:

Housing: LCP, UL94V-0 ,Black.

Power Contacts: High Conductivity Copper .
30u" Au+Pd/Ni on Contact Area and 80u" Min Tin
Plated on Solder Tail over nickel 50u" Min .

Signal Contacts : Phosphor Bronze .
30u" Au+Pd/Ni on Contact Area and 80u" Min Tin
Plated on Solder Tail over nickel 50u" Min .

Electrical Characteristics:

Current Rating: Signal Pin 1.5 A
Power Pin 12.5A(UL).

Dielectric Withstanding Voltage:

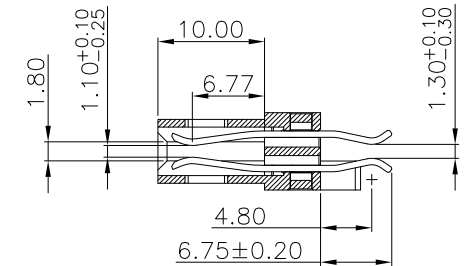
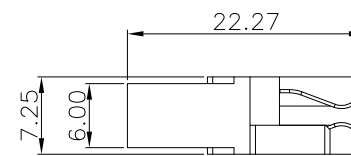
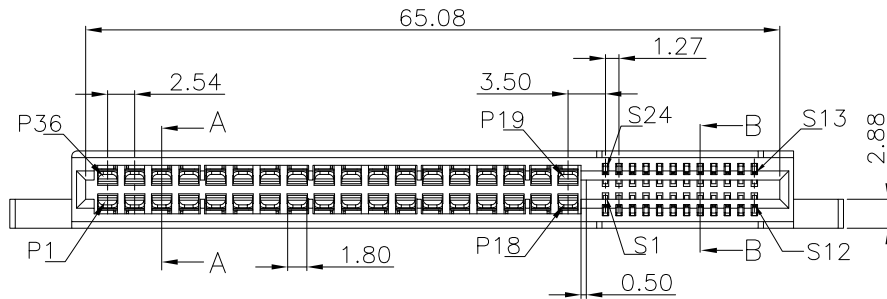
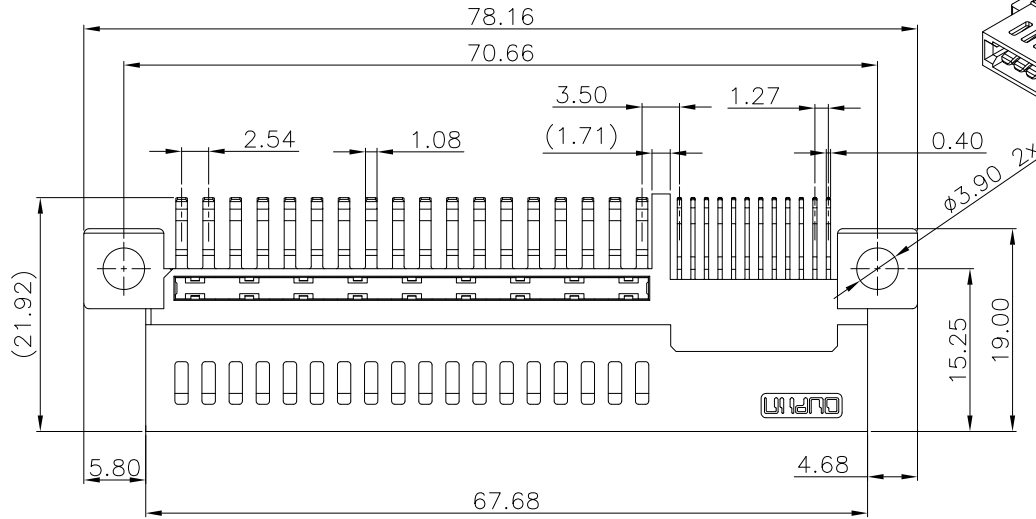
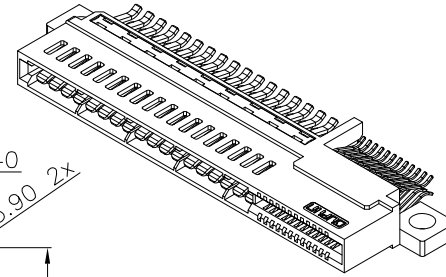
Signal Pin DC 500V For 1 minute.
Power Pin DC 1000V For 1 minute.

Insulator Resistance: Signal Pin 500MΩ min. at DC 500V.
Power Pin 5000MΩ min. at DC 500V.

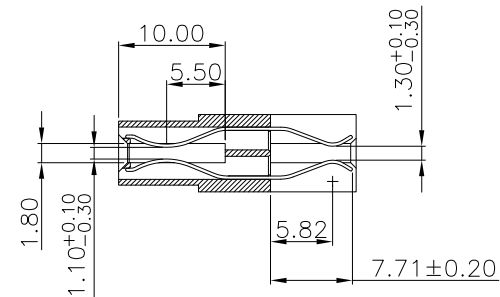
Contact Resistance: Signal Pin 25mΩ max.
Power Pin 0.6mΩ max.

Operating Temperature: -55°C ~+105°C.

***RoHS Compliant**



SECTION B-B
SCALE 1:1

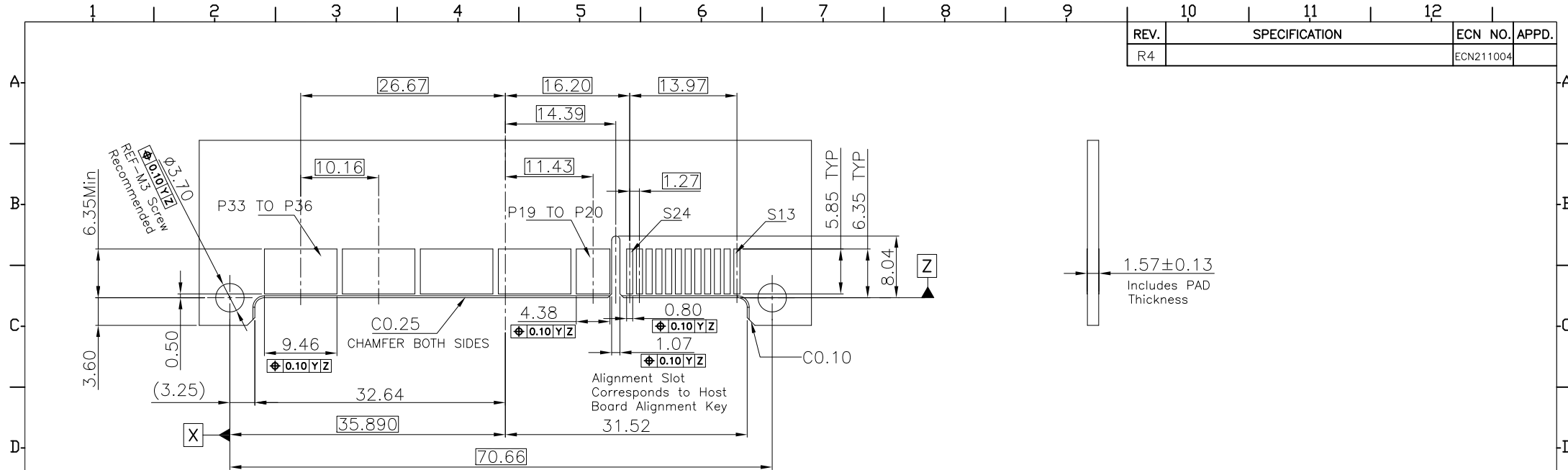


SECTION A-A
SCALE 1:1

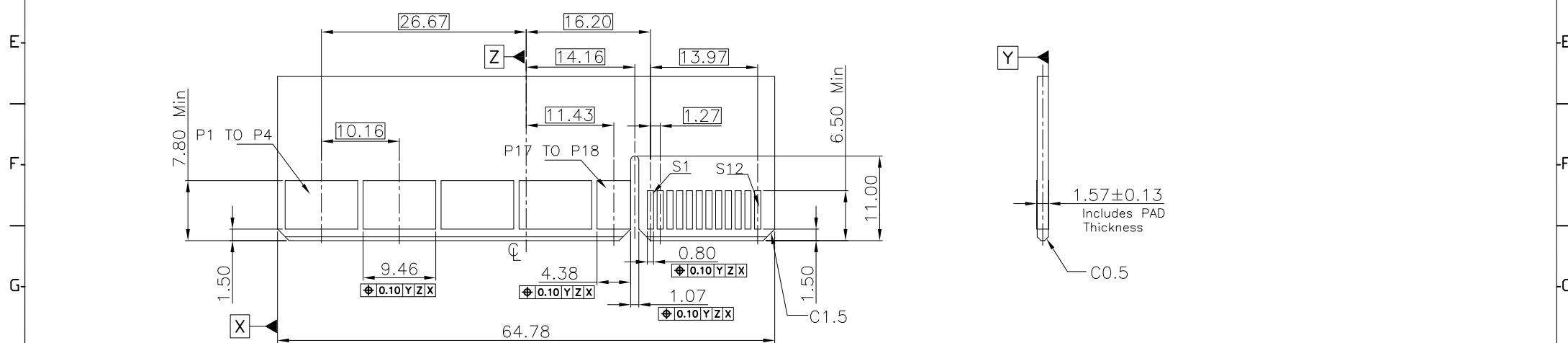
- 9302- 2 A1 S24 N 1 1 1 A CB30 K A
- Series
- 2:Female Straighy
- Type: A1
- A1:H16P02
- Sxx:Signal Pin
- N:W/O Post
- 1:Begin DIM G 1.10mm
- 1:With Front Key,With Host Board Key, With Screw Holes
- 1:End DIM G 1.30mm
- A: Tray Package
- K:Straddle Type
- CB: Contact Au+Pd/Ni , Dip Tin 30u"
- A:Signal pitch 1.27

Tolerances x = ±0.5 .x = ±0.25 .xx = ±0.15	Dwg No. 9302-D0000-012	Title: 9302 Series		 OUPIN ELECTRONIC(KUNSHAN) CO., LTD. P/N: 9302-2A1S24N111ACB30KA
	Projection	High Power and Signal		
	Unit mm	Scale 1:1	Edge Card Connector	
Drawn By GYJ	10/10/21'	SHEET 1/2	Ver.No.	R4


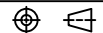
REV.	SPECIFICATION	ECN NO.	APPD.
R4		ECN211004	



Recommended Host Board Layout
(Tolerance: ±0.05)



Recommended Mating Board
(Tolerance: ±0.05)

Tolerances x = ±0.5 .x = ±0.25 .xx = ±0.15	Dwg No.	9302-D0000-012		Title: 9302 Series High Power and Signal Edge Card Connector	 OUPIIN ELECTRONIC(KUNSHAN) CO., LTD. P/N: 9302-2A1S24N111ACB30KA				
	Projection								
	Unit	mm	Scale		1:1	SHEET	2/2	Ver.No.	R4
	Drawn By	GYJ	10/10/21'						