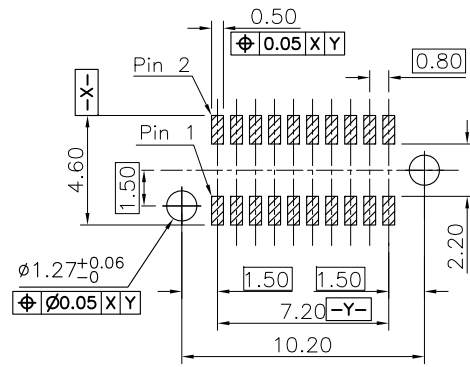
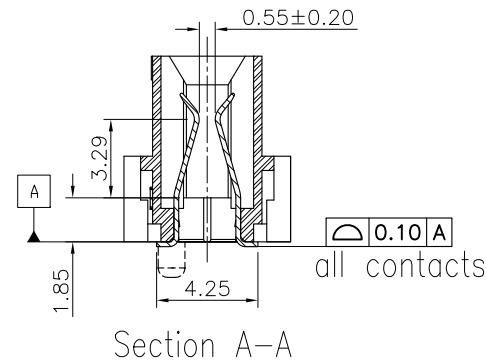
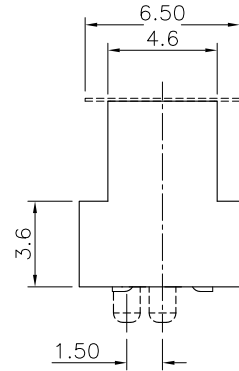
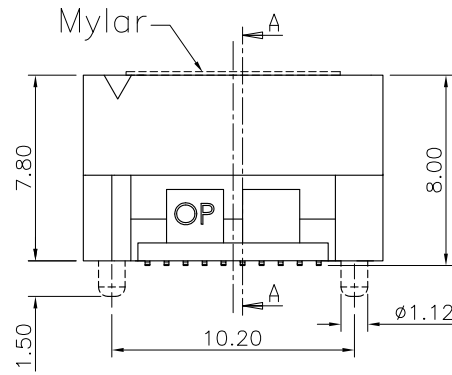
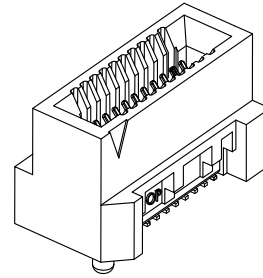
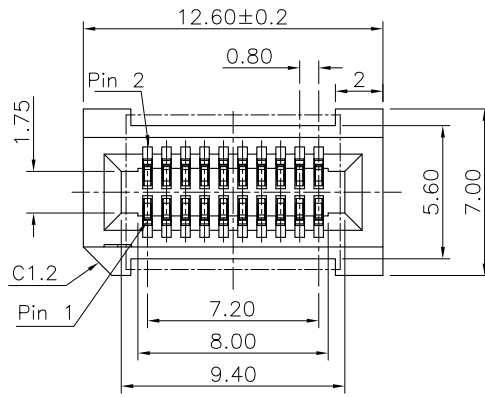


REV.	SPECIFICATION	ECN NO.	APPD.
R12		ECN211220	



P.C. Board Layout  
(Tolerance ±0.05)

8206- 2 X 10 C xx D P T - S

Series: S: Mylar, P: Plastic Pad, Blank: Without Pad  
 Double Row  
 Position Per Row: T: Tape&Reel Packaging, U: Tube Packaging  
 C: Selective Gold Plated  
 00: 00µ", 10: 10µ", 15: 15µ", 30: 30µ"  
 P: With Post, N: Without Post, D: SMD Type

Tolerances	Dwg.No.	8206-D0000-001		Title:	
x = ±0.50	Projection			8206 Series Edge Card Connector 0.80mm (0.0315") Pitch SMD Type	
.x = ±0.25	Unit	mm	Scale		1:1
.xx = ±0.15	Drawn By	ZY 12/22'21			

<b>OUPIN</b>			
OUPIN ELECTRONIC(KUNSHAN) CO., LTD.			
P/N:		8206-2X10CxxDPT-S	
SHEET	1/2	Ver.No.	R12

**Material and Plating :**

Housing: LCP, UL94V-0,Black.

Contacts:High performance Copper Alloy

Gold Plated on Contact Area and 80u" Min Tin Plated on solder tail over Nickel 50u" Min.

**Electrical Characteristics:**

Current Rating: 3.1 AMP.

Dielectric Withstanding Voltage: AC 600V For 1 minute.

Insulator Resistance: 6000MΩ min. at DC 250V.

Contact Resistance: 8.4mΩ max. at DC 100mA.

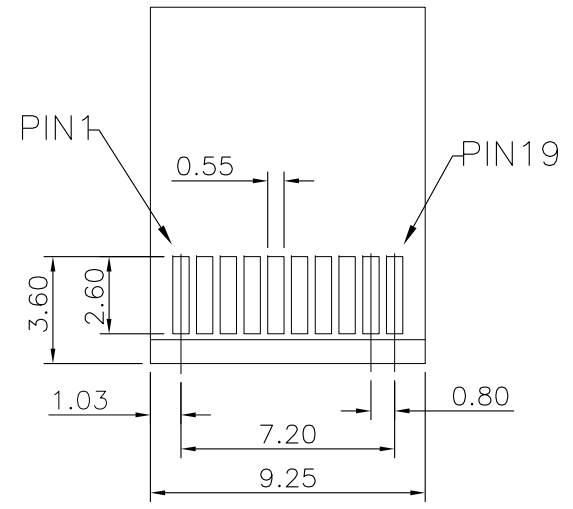
Operating Temperature: -55°C~+125°C.

**\*RoHS Compliant**

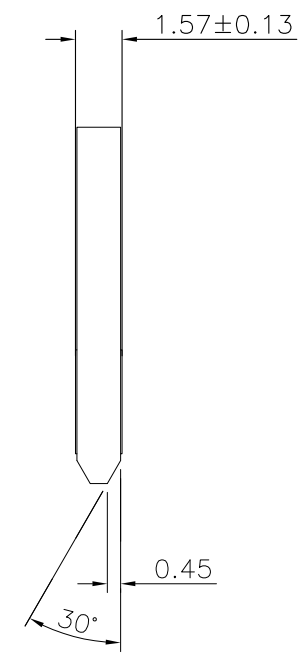
Insertion Depth: 3.15mm To 5.55mm.


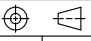
Speed:28+Gbps @-3dB.

REV.	SPECIFICATION	ECN NO.	APPD.
R12		ECN211220	



RECOMMENDED MATTING BOARD FOOTPRINT  
(Tolerance: ±0.05)



Tolerances		Dwg.No.	8206-D0000-001		Title:		 <b>OUPIIN ELECTRONIC(KUNSHAN) CO., LTD.</b>		
x = ±0.50	Projection			8206 Series Edge Card Connector		P/N: 8206-2X10CxxDPT-S			
.x = ±0.25	Unit	mm	Scale	1:1	0.80mm (0.0315") Pitch SMD Type		SHEET		
.xx = ±0.15	Drawn By	ZY 12/22'21				2/2		Ver.No.	R12