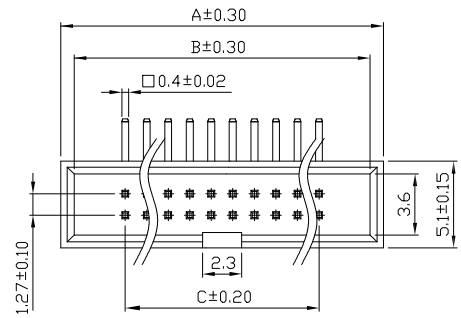
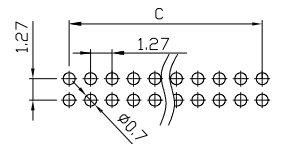
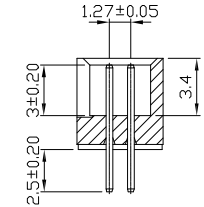
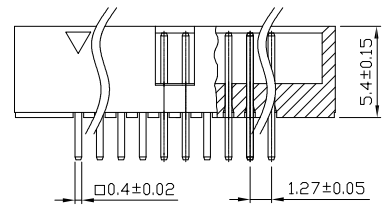
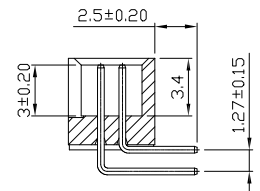
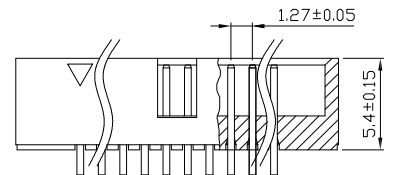
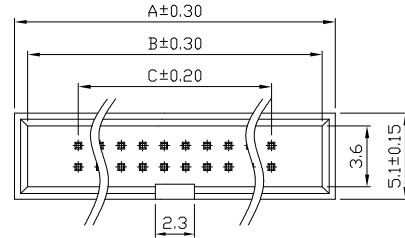


REV.	SPECIFICATION	ECN NO.	APPD.

3216-xxG00RBU



3216-xxG00SBU



P.C.Board Layout

3216- xx G 00 x B U

Series ———— U:Tube Package
 No. of Pin ———— B:Black
 Count ———— S:Straight
 ———— R:Right Angle
 G:Gold Plated ———— 00:Gold Flash
 ———— 10:10u"

Material:
 Housing: LCP,UL94V-0.
 Contacts: Phosphor Bronze, Gold Plated over Nickel 25~30u"

Electrical Characteristics:
 Current Rating: 1 AMP.
 Dielectric Withstanding Voltage:500V AC .
 Insulator Resistance: 1000MΩ min.
 Contact Resistance: 20mΩ max.
 Operating Temperature: -40°C~+105°C.
***RoHS Compliant**

Positions	A	B	C
10	12.65	11.10	5.08
12	13.92	12.37	6.35
14	15.19	13.64	7.62
16	16.46	14.91	8.89
20	19.00	17.45	11.43
24	21.54	19.99	13.97
26	22.81	21.26	15.24
28	24.08	22.53	16.51
30	25.35	23.80	17.78
34	27.89	26.34	20.32
40	31.70	30.15	24.13
44	34.24	32.69	26.67
50	38.05	36.50	30.48
60	44.40	42.85	36.83
64	46.94	45.39	39.37
68	49.48	47.93	41.91
80	57.10	55.55	49.53
100	69.80	68.25	62.23

Tolerances	Dwg. No.	3216D01001	Title:		3216 Series Box Header 1.27mmX1.27mm Straight & Right Anght Type	 OUPIIN ELECTRONIC(KUNSHAN) CO., LTD. P/N: 3216-xxG00xBU	
x = ±0.5	Projection		Scale				SHEET
.x = ±0.25	Unit	mm	Scale	1:N			
.xx = ±0.15	Drawn By	Martin 08/24'23	Scale	1:N			Ver. No.