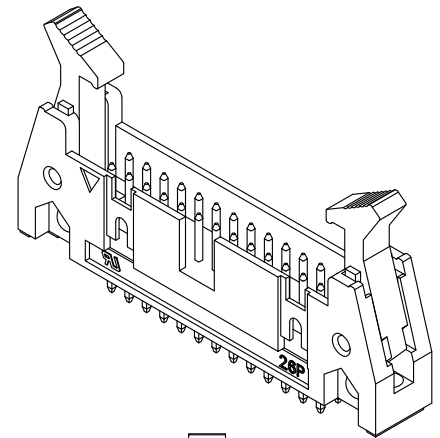
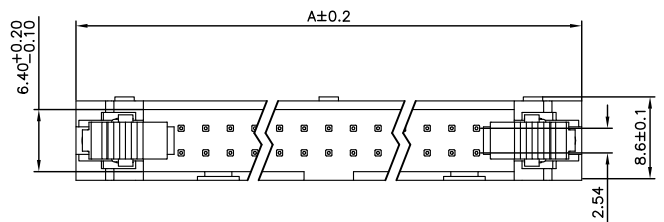


1 2 3 4 5 6 7 8 9

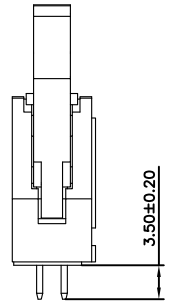
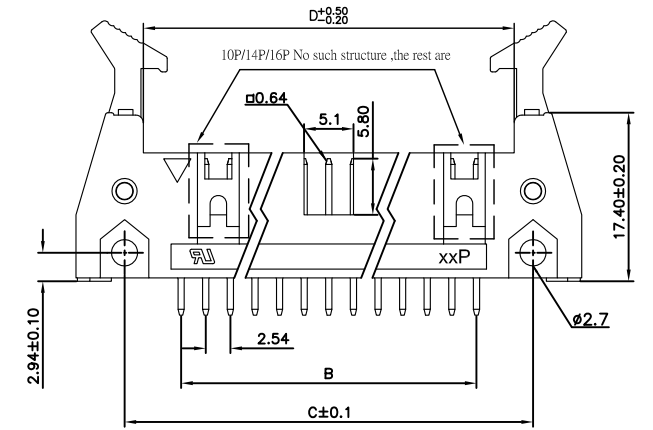
REV.	SPECIFICATION	ECN NO.	APPD.
R10		ECN220342	



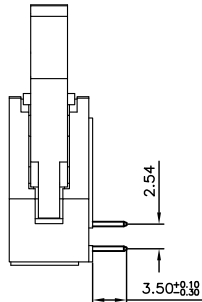
Material:
Housing: Thermoplastic Polyester Glass Filled UL94V-0.
Contacts: Copper Alloy.

Electrical Characteristics:
Current Rating: 2 AMP.
Dielectric Withstanding Voltage: AC 1000V For 1 minute.
Insulator Resistance: 1000MΩ min. at DC 500V.
Contact Resistance: 20mΩ max. at DC 100mA.
Operating Temperature: -40°C ~+105°C .

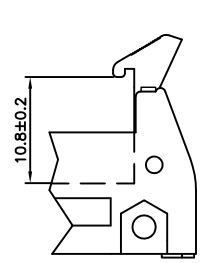
***RoHS Compliant**



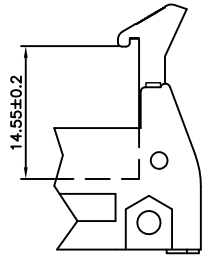
Straight Type



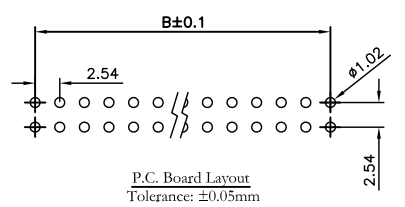
Right Angle Type



Short Lever



Long Lever



3011- xx G xx S B x A

- Series
- No. of Pin Count
- C: Selective Gold Plated
- G: Gold Plated
- T: Tin Plated
- 00:G/F
- 10:10u"
- 15:15u"
- 30:30u"
- A: Tray Package
- 1: With Long Ejectors
- 2: With Short Ejectors
- 3: Without Ejectors
- B: Black
- Y: Grey
- U: Blue
- S: Straight
- R: Right Angle

Position	Dimension			
	A	B	C	D
10	31.88	10.16	21.84	17.96
14	36.96	15.24	26.92	23.04
16	39.50	17.78	29.46	25.58
20	44.58	22.86	34.54	30.66
26	52.20	30.48	42.16	38.28
30	57.28	35.56	47.24	43.36
34	62.36	40.64	52.32	48.44
40	69.98	48.26	59.94	56.06
50	82.68	60.96	72.64	68.76
60	95.38	73.66	85.34	81.46
64	100.46	78.74	90.42	86.54

Tolerances	Dwg. No.	3011D01001		Title: 3011 Series Box Header With Ejectors 2.54mm
x = ±0.5	Projection	⊕ ↗		
.x = ±0.25	Unit	mm	Scale 1:1	
.xx = ±0.15	Drawn By	CCH 3/15'22		

OUPIN			
OUPIN ELECTRONIC(KUNSHAN) CO., LTD.			
P/N: 3011-xxGxxSBxA			
SHEET	1/1	Ver.No.	R10

1 2 3 4 5 6 7 8 9 10 11 12